

## Anti-PTEN (Tumor Suppressor Protein) Antibody

Catalog Number: M00006

### About PTEN

This gene encodes a nuclear phosphoprotein that plays a role in maintaining genomic stability, and it also acts as a tumor suppressor. The encoded protein combines with other tumor suppressors, DNA damage sensors, and signal transducers to form a large multi-subunit protein complex known as the BRCA1-associated genome surveillance complex (BASC). This gene product associates with RNA polymerase II, and through the C-terminal domain, also interacts with histone deacetylase complexes. This protein thus plays a role in transcription, DNA repair of double-stranded breaks, and recombination. Mutations in this gene are responsible for approximately 40% of inherited breast cancers and more than 80% of inherited breast and ovarian cancers. Alternative splicing plays a role in modulating the subcellular localization and physiological function of this gene.

### Overview

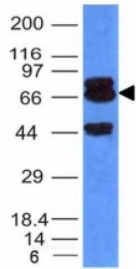
Product Name	Anti-PTEN (Tumor Suppressor Protein) Antibody
Reactive Species	Human
Description	Boster Bio Anti-PTEN (Tumor Suppressor Protein) Antibody catalog # M00006. Tested in IHC applications. This antibody reacts with Human.
Conjugate	Biotin
Application	IHC
Clonality	Polyclonal Clone: BRCA1/1398
Formulation	Prepared in 10mM PBS with 0.05% BSA & 0.05% azide. Also available WITHOUT BSA at 1.0mg/ml.
Storage Instructions	Antibody with azide - store at 2 to 8°C. Antibody without azide - store at -20 to -80°C. Antibody is stable for 24 months. Non-hazardous. No MSDS required.
Host	Rabbit
Uniprot ID	P60484

### Technical Details

Immunogen	Recombinant full-length human PTEN protein
Predicted Reactive Species	Chimpanzee
Isotype	IgG1, kappa
Form	Liquid
Concentration	0.5-1mg/ml, actual concentration vary by lot. Use suggested dilution ratio to decide dilution procedure.

Purification	200ug/ml of antibody purified from Bioreactor Concentrate by Protein A/G.
Suggested Dilutions	<p>Dilute the sample so that the expected range of concentrations fall within the detection range of this kit.</p> <p>If the expected range of concentration is unknown, a pilot test should be conducted to decide the optimal dilution ratio for your samples.</p> <p>Some PubMed article(s) citing the expression level of this target are as follows:</p> <p>Boster Bio's internal QC testing used:</p> <p>Immunofluorescence (1-2ug/ml)</p>

## Anti-PTEN (Tumor Suppressor Protein) Antibody (M00006) Images



Formalin-fixed, paraffin-embedded human Prostate Carcinoma stained with PTEN Polyclonal Antibody.

## 7 Publications Citing This Product

1. PubMed ID: 25395712, Li W, Wu D, Wei B, Wang S, Sun H, Li X, Zhang F, Zhang C, Xin Y. Afr J Tradit Complement Altern Med. 2014 Aug 23;11(5):99-104. Ecollection 2014. Anti-Tumor Effect Of Cactus Polysaccharides On Lung Squamous Carcinoma Cells (Sk-Mes-1).
2. PubMed ID: 26448020, 708: Combined Analysis of EGFR and PTEN Status in Patients With KRAS Wild-Type Metastatic Colorectal Cancer
3. PubMed ID: 26722456, Prognostic role of PPAR- $\gamma$  and PTEN in the renal cell carcinoma

Visit [bosterbio.com/anti-pten-tumor-suppressor-protein-antibody-m00006-boster.html](http://bosterbio.com/anti-pten-tumor-suppressor-protein-antibody-m00006-boster.html) to see all 7 publications.

## Submit a product review to Biocompare.com

Submit a review of this product to Biocompare.com to receive a \$20 Amazon.com giftcard! Your reviews help your fellow scientists make the right decisions. Thank you for your contribution.



Anti-PTEN (Tumor Suppressor Protein) Antibody