

Anti-HER-2 / c-erbB-2 / neu / CD340 Monoclonal Antibody

Catalog Number: M00010

About ERBB2

This monoclonal antibody is specific to c-erbB-2/HER-2 and shows minimal cross-reaction with other members of the family. C-erbB-2/HER-2 is a member of the EGFR family. Receptors of this family are located on the plasma membrane and consist of an extracellular ligand-binding domain that is connected to a large intracellular domain by a single transmembrane sequence. c-erbB-2/HER-2 protein is over-expressed in a variety of carcinomas especially those of breast and ovary.

Overview

Product Name	Anti-HER-2 / c-erbB-2 / neu / CD340 Monoclonal Antibody
Reactive Species	Human
Description	Boster Bio Anti-HER-2 / c-erbB-2 / neu / CD340 Monoclonal Antibody (Catalog # M00010). Tested in ELISA, Flow Cytometry, IF applications. This antibody reacts with Human.
Conjugate	Biotin
Application	ELISA, Flow Cytometry, IF
Clonality	Monoclonal Clone: ERB2/776
Formulation	Prepared in 10mM PBS with 0.05% BSA & 0.05% azide. Also available WITHOUT BSA & azide at 1.0mg/ml.
Storage Instructions	Antibody with azide - store at 2 to 8°C. Antibody without azide - store at -20 to -80°C. Antibody is stable for 24 months. Non-hazardous. No MSDS required.
Host	Mouse
Uniprot ID	P04626

Technical Details

Immunogen	Recombinant intracellular domain of human HER-2 protein
Predicted Reactive Species	Chimpanzee
Isotype	IgG1, kappa
Form	Liquid
Concentration	Purified antibody with BSA and azide at 200ug/ml
Purification	200ug/ml of antibody purified from Bioreactor Concentrate by Protein A/G.
Suggested Dilutions	Dilute the sample so that the expected range of concentrations fall within the detection range of this

kit.

If the expected range of concentration is unknown, a pilot test should be conducted to decide the optimal dilution ratio for your samples.

Some PubMed article(s) citing the expression level of this target are as follows:

Boster Bio's internal QC testing used:

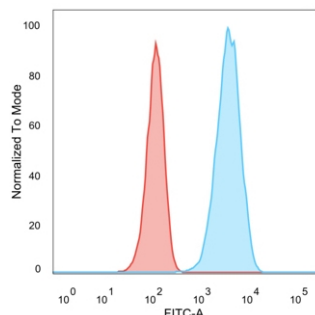
ELISA (For coating, order antibody without BSA)

Flow Cytometry (1-2ug/million cells)

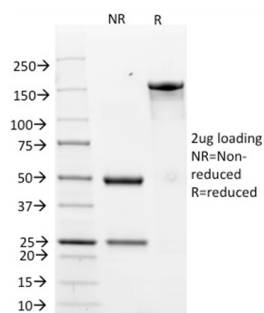
Immunofluorescence (1-2ug/ml)

Optimal dilution for a specific application should be determined.

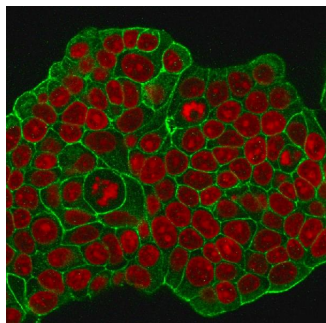
Anti-HER-2 / c-erbB-2 / neu / CD340 Monoclonal Antibody (M00010) Images



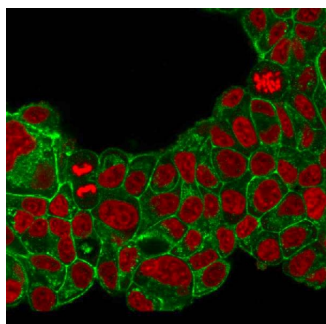
Flow cytometric analysis of human trypsinized MCF-7 cells using Anti-HER-2 Mouse Monoclonal Antibody (HRB2/776) followed by goat anti-mouse IgG-CF488 (blue); Isotype control (red).



SDS-PAGE analysis purified Anti-HER-2 Mouse Monoclonal Antibody (HRB2/776). Confirmation of integrity and purity of antibody.



Immunofluorescent staining of MeOH-fixed MCF-7 cells with Anti-HER-2 Mouse Monoclonal Antibody (HRB2/776) followed by goat anti-mouse IgG-CF488 (Green). Nuclei are stained with Reddot (Red).



Immunofluorescent staining of PFA-fixed MCF-7 cells with Anti-HER-2 Mouse Monoclonal Antibody (HRB2/776) followed by goat anti-mouse IgG-CF488 (Green). Nuclei are stained with Reddot (Red).

4 Publications Citing This Product

1. PubMed ID: 10.1177/0963689720925055, Infection of Placental Extravillous Cytotrophoblasts with Human Cytomegalovirus Causes a Treg/Th17 Imbalance at the Maternal-Fetal Interface:
2. PubMed ID: 28667103, Tong ZJ, Shi NY, Zhang ZJ, Yuan XD, Hong XM. Biosci Rep. 2017 Aug 2;37(4). pii: BSR20170121. doi: 10.1042/BSR20170121. Print 2017 Aug 31. Expression and prognostic value of HER-2/neu in primary breast cancer with sentinel lymph node

metastasis

3. PubMed ID: 21392403, Tao L, Suhua C, Juanjuan C, Zongzhi Y, Juan X, Dandan Z. Virol J. 2011 Mar 11;8:114. Doi: 10.1186/1743-422X-8-114. In Vitro Study On Human Cytomegalovirus Affecting Early Pregnancy Villous Evt'S Invasion Function.

Visit bosterbio.com/anti-her-2-c-erbB-2-neu-cd340-antibody-m00010-boster.html to see all 4 publications.

Submit a product review to Biocompare.com

Submit a review of this product to Biocompare.com to receive a \$20 Amazon.com giftcard! Your reviews help your fellow scientists make the right decisions. Thank you for your contribution.



Anti-HER-2 / c-erbB-2 / neu / CD340 Monoclonal Antibody