

Anti-Myc Tag Antibody (monoclonal, 10D11)

Catalog Number: M00026-2

About AKT1

A Myc tag is a polypeptide protein tag derived from the c-myc gene product that can be added to a protein using recombinant DNA technology. The myc tag antibody can be used in detecting the recombinant protein with a myc tag for many purposes, for example cellular localization studies by immunofluorescence or detection by Western blotting.

Overview

| | |
|----------------------|---|
| Product Name | Anti-Myc Tag Antibody (monoclonal, 10D11) |
| Reactive Species | All species |
| Description | Boster Bio Anti-Myc Tag Antibody (monoclonal, 10D11) catalog # M00026-2. Tested in Dot blot, ELISA, WB applications. This antibody reacts with All species. |
| Conjugate | HRP |
| Application | Dot blot, ELISA, WB |
| Clonality | Monoclonal 10D11 |
| Formulation | 0.5mg/ml in PBS, pH7.4, containing 50% glycerol. |
| Storage Instructions | Store at -20°C for one year. For short term storage and frequent use, store at 4°C for up to one month. Avoid repeated freeze-thaw cycles. |
| Host | Mouse |
| Uniprot ID | P31749 |

Technical Details

| | |
|----------------------------|---|
| Immunogen | This antibody is produced by immunizing animals with a synthetic Myc tag peptide corresponding to KLH. |
| Predicted Reactive Species | Bovine, Canine, Equine, Guinea Pig, Pig, Rabbit, Zebrafish |
| Isotype | IgG1 |
| Form | Liquid |
| Concentration | 0.5mg/ml |
| Purification | Protein A purified |
| Suggested Dilutions | Dilute the sample so that the expected range of concentrations fall within the detection range of this kit. |

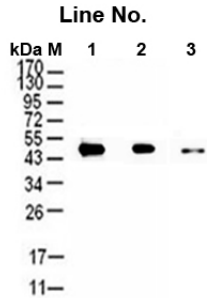
If the expected range of concentration is unknown, a pilot test should be conducted to decide the optimal dilution ratio for your samples.

Some PubMed article(s) citing the expression level of this target are as follows:

Boster Bio's internal QC testing used:

1:500-1:5000

Anti-Myc Tag Antibody (monoclonal, 10D11) (M00026-2) Images



Western blot analysis of different concentration of Myc (10D11) Monoclonal Antibody
Antigen: Extracts from E.coli expressing Myc-tagged protein
Line No.

1: 1 ug/mL

2: 0.5 ug/mL

3: 0.1 ug/mL

Blocking: Incubate the membrane with 5% Non-Fat Milk, 1PBS, 4 overnight

Antibody Incubation: Diluted antibody in 5% Non-Fat Milk, 1TBS, 0.1% Tween-20, RT, 30mins

Submit a product review to Biocompare.com

Submit a review of this product to Biocompare.com to receive a \$20 Amazon.com giftcard! Your reviews help your fellow scientists make the right decisions. Thank you for your contribution.



Anti-Myc Tag Antibody (monoclonal, 10D11)