

Anti-Bcl-2 Rabbit Monoclonal Antibody

Catalog Number: M00040-2

About BCL2

Phosphoinositide-3-kinase (PI3K) that phosphorylates PtdIns (Phosphatidylinositol), PtdIns4P (Phosphatidylinositol 4-phosphate) and PtdIns (4,5) P2 (Phosphatidylinositol 4,5-bisphosphate) to generate phosphatidylinositol 3,4,5-trisphosphate (PIP3). PIP3 plays a key role by recruiting PH domain-containing proteins to the membrane, including AKT1 and PDK1, activating signaling cascades involved in cell growth, survival, proliferation, motility and morphology. Participates in cellular signaling in response to various growth factors.

Overview

Product Name	Anti-Bcl-2 Rabbit Monoclonal Antibody
Reactive Species	Human, Mouse
Description	Boster Bio Anti-Bcl-2 Rabbit Monoclonal Antibody catalog # M00040-2. Tested in WB, IHC, ICC/IF, Flow Cytometry applications. This antibody reacts with Human, Mouse.
Application	Flow Cytometry, IF, IHC, ICC, WB
Clonality	Monoclonal AAOH-2
Formulation	Rabbit IgG in phosphate buffered saline, pH 7.4, 150mM NaCl, 0.02% sodium azide and 50% glycerol, 0.4-0.5mg/ml BSA.
Storage Instructions	Store at -20°C for one year. For short term storage and frequent use, store at 4°C for up to one month. Avoid repeated freeze-thaw cycles.
Host	Rabbit
Uniprot ID	P10415

Technical Details

Immunogen	A synthesized peptide derived from human Bcl-2
Isotype	Rabbit IgG
Form	Liquid
Concentration	Actual concentration vary by lot. Use suggested dilution ratio to decide dilution procedure.
Purification	Affinity-chromatography
Suggested Dilutions	Dilute the sample so that the expected range of concentrations fall within the detection range of this kit. If the expected range of concentration is unknown, a pilot test should be conducted to decide the optimal dilution ratio for your samples. Some PubMed article(s) citing the expression level of this target are as follows:

Boster Bio's internal QC testing used:

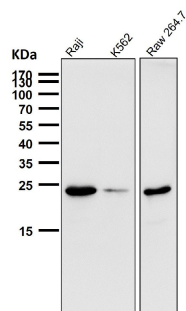
WB 1:1000-1:2000

IHC 1:50-1:200

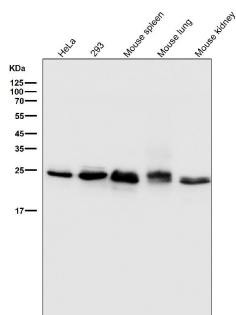
ICC/IF 1:50-1:200

FC 1:50

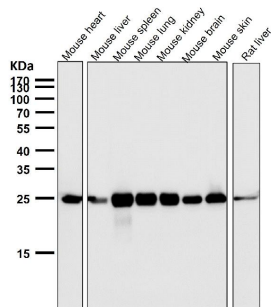
Anti-Bcl-2 Rabbit Monoclonal Antibody (M00040-2) Images



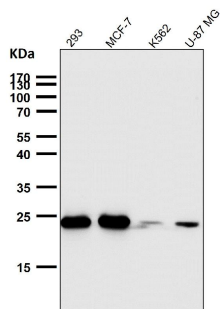
All lanes use the Antibody at 1:1W dilution for 1 hour at room temperature.



All lanes use the Antibody at 1:1W dilution for 1 hour at room temperature.

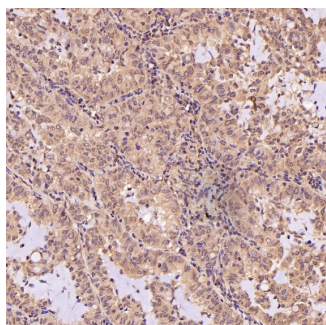
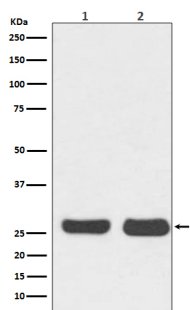


All lanes use the Antibody at 1:1W dilution for 1 hour at room temperature.

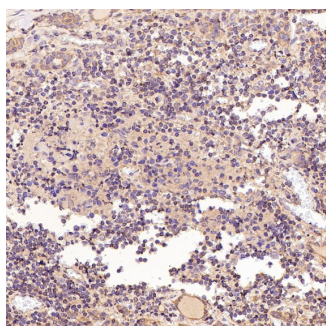


All lanes use the Antibody at 1:1W dilution for 1 hour at room temperature.

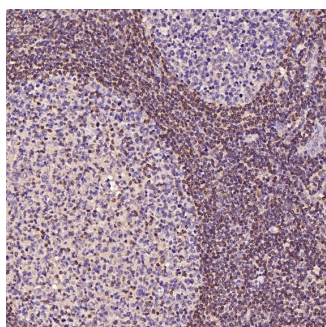
Western blot analysis of Bcl-2 expression in (1) HeLa cell lysate; (2) NIH/3T3 cell lysate.



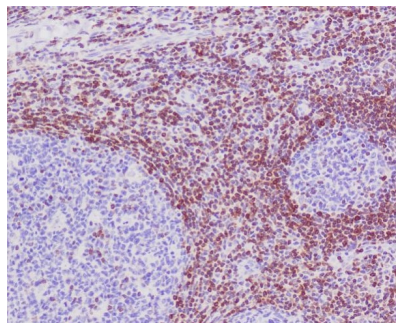
Immunohistochemical analysis of paraffin-embedded Human lung adenocarcinoma, using the Antibody at 1:100 dilution.



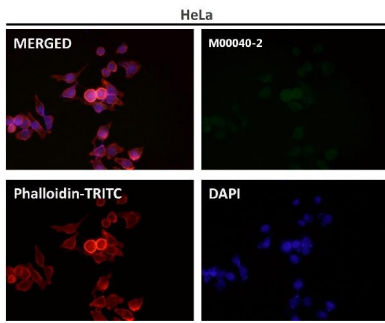
Immunohistochemical analysis of paraffin-embedded Human thyroid cancer, using the Antibody at 1:300 dilution.



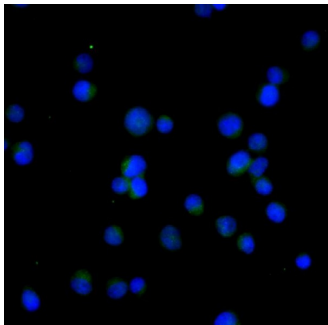
Immunohistochemical analysis of paraffin-embedded Human tonsil, using the Antibody at 1:300 dilution.



Immunohistochemical analysis of paraffin-embedded human tonsil, using Bcl-2 Antibody.



Immunofluorescent analysis using the Antibody at 1:150 dilution.



Immunofluorescent analysis of Jurkat cells, using Bcl-2 Antibody .

39 Publications Citing This Product

1. PubMed ID: 25333250, Chen Xm, Xie Xb, Zhao Q, Wang F, Bai Y, Yin Jq, Jiang H, Xie Xi, Jia Q, Huang G. Mol Med Rep. 2015 Jan;11(1):105-12. Doi: 10.3892/Mmr.2014.2733. Epub 2014 Oct 21. Ampelopsin Induces Apoptosis By Regulating Multiple C-Myc/S-Phase Kinase-Associated ...
2. PubMed ID: 23426065, Li R, Wu X, Wei H, Tian S. Oncol Lett. 2013 Mar;5(3):877-883. Epub 2013 Jan 2. Characterization Of Side Population Cells Isolated From The Gastric Cancer Cell Line Sgc-7901.
3. PubMed ID: 18203291, Chen Xi, Cao Lq, She Mr, Wang Q, Huang Xh, Fu Xh. World J Gastroenterol. 2008 Jan 28;14(4):582-9. Gli-1 Sirna Induced Apoptosis In Huh7 Cells.

Visit bosterbio.com/anti-bcl-2-rabbit-monoclonal-antibody-m00040-2-boster.html to see all 39 publications.

Submit a product review to Biocompare.com

Submit a review of this product to Biocompare.com to receive a \$20 Amazon.com giftcard! Your reviews help your fellow scientists make the right decisions. Thank you for your contribution.



Anti-Bcl-2 Rabbit Monoclonal Antibody