

Anti-IL1 beta Rabbit Monoclonal Antibody

Catalog Number: M00101

About IL1B

Phosphoinositide-3-kinase (PI3K) that phosphorylates PtdIns (Phosphatidylinositol), PtdIns4P (Phosphatidylinositol 4-phosphate) and PtdIns (4,5) P2 (Phosphatidylinositol 4,5-bisphosphate) to generate phosphatidylinositol 3,4,5-trisphosphate (PIP3) . PIP3 plays a key role by recruiting PH domain-containing proteins to the membrane, including AKT1 and PDK1, activating signaling cascades involved in cell growth, survival, proliferation, motility and morphology. Participates in cellular signaling in response to various growth factors.

Overview

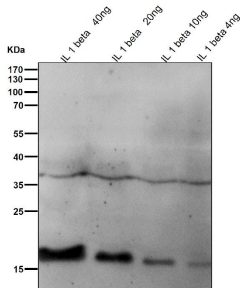
Product Name	Anti-IL1 beta Rabbit Monoclonal Antibody
Reactive Species	Human
Description	Boster Bio Anti-IL1 beta Rabbit Monoclonal Antibody catalog # M00101. Tested in WB application. This antibody reacts with Human.
Application	WB
Clonality	Monoclonal IBF-9
Formulation	Rabbit IgG in phosphate buffered saline, pH 7.4, 150mM NaCl, 0.02% sodium azide and 50% glycerol, 0.4-0.5mg/ml BSA.
Storage Instructions	Store at -20°C for one year. For short term storage and frequent use, store at 4°C for up to one month. Avoid repeated freeze-thaw cycles.
Host	Rabbit
Uniprot ID	P01584

Technical Details

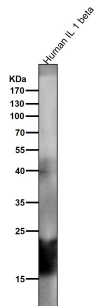
Immunogen	A synthesized peptide derived from human IL1 beta
Isotype	Rabbit IgG
Form	Liquid
Concentration	Actual concentration vary by lot. Use suggested dilution ratio to decide dilution procedure.
Purification	Affinity-chromatography
Suggested Dilutions	Dilute the sample so that the expected range of concentrations fall within the detection range of this kit. If the expected range of concentration is unknown, a pilot test should be conducted to decide the optimal dilution ratio for your samples. Some PubMed article(s) citing the expression level of this target are as follows:

Boster Bio's internal QC testing used:
WB 1:500-1:2000

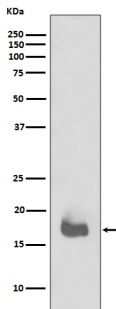
Anti-IL1 beta Rabbit Monoclonal Antibody (M00101) Images



All lanes use the Antibody at 1:500 dilution for 1 hour at room temperature.



All lanes use the Antibody at 1:500 dilution for 1 hour at room temperature.



Western blot analysis of IL1 beta expression in recombinant IL1 beta protein.

4 Publications Citing This Product

1. PubMed ID: 22942709, Qin Q, Niu J, Wang Z, Xu W, Qiao Z, Gu Y. Int J Mol Sci. 2012;13(7):8379-87. Doi: 10.3390/Ijms13078379. Epub 2012 Jul 5. Astragalus Membranaceus Inhibits Inflammation Via Phospho-P38 Mitogen-Activated Protein Kinase (Mapk) And Nuclear Factor (Nf)-...
2. PubMed ID: 25338658, Antenatal exposure of maternal secondhand smoke (SHS) increases fetal lung expression of RAGE and induces RAGE-mediated pulmonary inflammation
3. PubMed ID: 28910983, Quantitative proteomic analysis of host responses triggered by Mycobacterium tuberculosis infection in human macrophage cells

Visit bosterbio.com/anti-il1-beta-rabbit-monoclonal-antibody-m00101-boster.html to see all 4 publications.

Submit a product review to Biocompare.com

Submit a review of this product to Biocompare.com to receive a \$20 Amazon.com giftcard! Your reviews help your fellow scientists make the right decisions. Thank you for your contribution.



Anti-IL1 beta Rabbit Monoclonal Antibody