

Anti-IKK beta IKBKB Rabbit Monoclonal Antibody

Catalog Number: M00118

About IKBKB

Phosphoinositide-3-kinase (PI3K) that phosphorylates PtdIns (Phosphatidylinositol), PtdIns4P (Phosphatidylinositol 4-phosphate) and PtdIns (4,5) P2 (Phosphatidylinositol 4,5-bisphosphate) to generate phosphatidylinositol 3,4,5-trisphosphate (PIP3) . PIP3 plays a key role by recruiting PH domain-containing proteins to the membrane, including AKT1 and PDK1, activating signaling cascades involved in cell growth, survival, proliferation, motility and morphology. Participates in cellular signaling in response to various growth factors.

Overview

Product Name	Anti-IKK beta IKBKB Rabbit Monoclonal Antibody
Reactive Species	Human, Mouse, Rat
Description	Boster Bio Anti-IKK beta IKBKB Rabbit Monoclonal Antibody catalog # M00118. Tested in WB, IHC, ICC/IF applications. This antibody reacts with Human, Mouse, Rat.
Application	IF, IHC, ICC, WB
Clonality	Monoclonal AOOA-9
Formulation	Rabbit IgG in phosphate buffered saline, pH 7.4, 150mM NaCl, 0.02% sodium azide and 50% glycerol, 0.4-0.5mg/ml BSA.
Storage Instructions	Store at -20°C for one year. For short term storage and frequent use, store at 4°C for up to one month. Avoid repeated freeze-thaw cycles.
Host	Rabbit
Uniprot ID	O14920

Technical Details

Immunogen	A synthesized peptide derived from human IKK beta
Isotype	Rabbit IgG
Form	Liquid
Concentration	Actual concentration vary by lot. Use suggested dilution ratio to decide dilution procedure.
Purification	Affinity-chromatography
Suggested Dilutions	Dilute the sample so that the expected range of concentrations fall within the detection range of this kit. If the expected range of concentration is unknown, a pilot test should be conducted to decide the optimal dilution ratio for your samples. Some PubMed article(s) citing the expression level of this target are as follows:

Boster Bio's internal QC testing used:

WB 1:500-1:2000

IHC 1:50-1:200

ICC/IF 1:50-1:200

Anti-IKK beta IKBKB Rabbit Monoclonal Antibody (M00118) Images

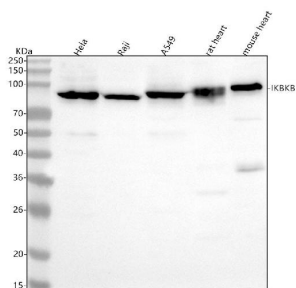


Figure 1. Western blot analysis of IKBKB using anti-IKBKB antibody (M00118).

Electrophoresis was performed on a 5-20% SDS-PAGE gel at 70V (Stacking gel) / 90V (Resolving gel) for 2-3 hours. The sample well of each lane was loaded with 30 ug of sample under reducing conditions.

Lane 1: human HeLa whole cell lysates,

Lane 2: human Raji whole cell lysates,

Lane 3: human A549 whole cell lysates,

Lane 4: rat heart tissue lysates,

Lane 5: mouse heart tissue lysates.

After electrophoresis, proteins were transferred to a nitrocellulose membrane at 150 mA for 50-90 minutes.

Blocked the membrane with 5% non-fat milk/TBS for 1.5

hour at RT. The membrane was incubated with rabbit anti-

IKBKB antigen affinity purified monoclonal antibody (Catalog

M00118) at 1:500 overnight at 4°C, then washed with

TBS-0.1%Tween 3 times with 5 minutes each and probed

with a goat anti-rabbit IgG-HRP secondary antibody at a

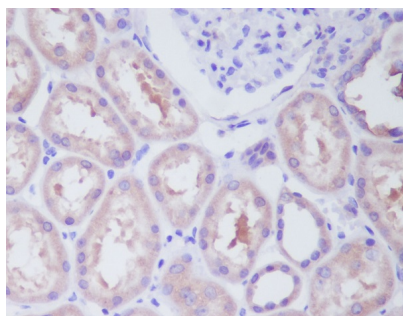
dilution of 1:5000 for 1.5 hour at RT. The signal is developed

using an Enhanced Chemiluminescent detection (ECL) kit

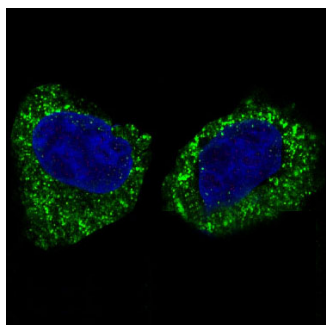
(Catalog # EK1002) with Tanon 5200 system. A specific

band was detected for IKBKB at approximately 87 kDa. The

expected band size for IKBKB is at 87 kDa.



Immunohistochemical analysis of paraffin-embedded human kidney, using IKK beta Antibody.



Immunofluorescent analysis of HeLa cells, using IKK beta Antibody.

Submit a product review to Biocompare.com

Submit a review of this product to Biocompare.com to receive a \$20 Amazon.com giftcard! Your reviews help your fellow scientists make the right decisions. Thank you for your contribution.



Anti-IKK beta IKBKB Rabbit Monoclonal Antibody