

## Anti-Cyclin D1 (CCND1) Rabbit Monoclonal Antibody, Clone#RM241

Catalog Number: M00149-3

### Overview

Product Name	Anti-Cyclin D1 (CCND1) Rabbit Monoclonal Antibody, Clone#RM241
Reactive Species	Human
Description	Boster Bio Anti-Cyclin D1 (CCND1) Rabbit Monoclonal Antibody, Clone#RM241 (Catalog # M00149-3). Tested in IHC, WB applications. This antibody reacts with Human.
Application	IHC, WB
Clonality	Monoclonal RM241
Formulation	50% Glycerol/PBS with 1% BSA and 0.09% sodium azide
Storage Instructions	Store at -20°C for one year. Avoid repeated freeze-thaw cycles.
Host	Rabbit
Uniprot ID	P24385

### Technical Details

Immunogen	A peptide corresponding to Cyclin D1
Predicted Reactive Species	Bovine, Mouse, Rat
Cross Reactivity	This antibody reacts to human Cyclin D1. This antibody may also react to bovine, mouse or rat Cyclin D1, as predicted by immunogen homology.
Isotype	Rabbit IgG
Form	Liquid
Concentration	0.5-1mg/ml, actual concentration vary by lot. Use suggested dilution ratio to decide dilution procedure.
Purification	Protein A affinity purified from an animal origin-free culture supernatant
Suggested Dilutions	<p>Dilute the sample so that the expected range of concentrations fall within the detection range of this kit.</p> <p>If the expected range of concentration is unknown, a pilot test should be conducted to decide the optimal dilution ratio for your samples.</p> <p>Some PubMed article(s) citing the expression level of this target are as follows:</p> <p>Boster Bio's internal QC testing used:</p> <p>Immunohistochemistry (IHC): 1:500-1:1000 dilution</p> <p>WB: 1:1000-1:2000 dilution.</p>



## Anti-Cyclin D1 (CCND1) Rabbit Monoclonal Antibody, Clone#RM241 (M00149-3) Images

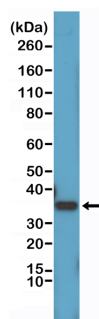


Figure 1. Western Blotting result  
Western Blot of HeLa cell lysates using Anti-Cyclin D1 RM241 at a 1:1000 dilution, showed a band of Cyclin D1 (~34 kDa) expressed in HeLa cells.

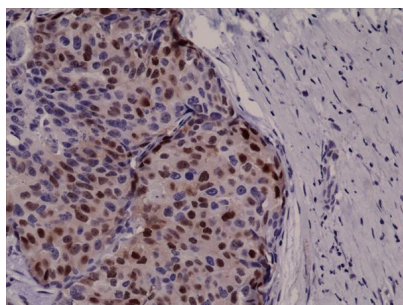


Figure 2. IHC result  
Immunohistochemical staining of formalin fixed and paraffin embedded human breast cancer tissue sections using Anti-Cyclin D1 RM241 at a 1:1000 dilution.

## 10 Publications Citing This Product

1. PubMed ID: 31974617, Wang S,Zhang C,Zhang X.Downregulation of long non-coding RNA ANRIL promotes proliferation and migration in hypoxic human pulmonary artery smooth muscle cells.Mol Med Rep.2020 Feb;21(2):589-596.doi:10.3892/mmr.2019.10887.Epub 2019 Dec 17.PMID:31974617; PMC
2. PubMed ID: 33292254, Wang C,Shao S,Deng L,Wang S,Zhang Y. LncRNA SNHG12 regulates the radiosensitivity of cervical cancer through the miR-148a/CDK1 pathway. Cancer Cell Int.2020 Dec 1;20(1):554.doi:10.1186/s12935-020-01654-5.PMID:33292254;PMCID:PMC7708190.
3. PubMed ID: 24966926, Huang B, Lu Ys, Li X, Zhu Zc, Li K, Liu Jw, Zheng J, Hu Zl. Int J Clin Exp Pathol. 2014 Apr 15;7(5):2179-84. Ecollection 2014. Androglobin Knockdown Inhibits Growth Of Glioma Cell Lines.

Visit [bosterbio.com/anti-cyclin-d1-ccnd1-rabbit-monoclonal-antibody-clone-rm241-m00149-3-boster.html](http://bosterbio.com/anti-cyclin-d1-ccnd1-rabbit-monoclonal-antibody-clone-rm241-m00149-3-boster.html) to see all 10 publications.

## Submit a product review to Biocompare.com

Submit a review of this product to Biocompare.com to receive a \$20 Amazon.com giftcard! Your reviews help your fellow scientists make the right decisions. Thank you for your contribution.



Anti-Cyclin D1 (CCND1) Rabbit Monoclonal Antibody, Clone#RM241