

## Anti-MUC1 Rabbit Monoclonal Antibody

Catalog Number: M00187-1

### About MUC1

C3 plays a central role in the activation of the complement system. Its processing by C3 convertase is the central reaction in both classical and alternative complement pathways. After activation C3b can bind covalently, via its reactive thioester, to cell surface carbohydrates or immune aggregates.

### Overview

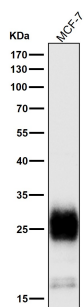
Product Name	Anti-MUC1 Rabbit Monoclonal Antibody
Reactive Species	Human, Mouse, Rat
Description	Boster Bio Anti-MUC1 Rabbit Monoclonal Antibody catalog # M00187-1. Tested in WB, IHC, ICC/IF, IP, Flow Cytometry applications. This antibody reacts with Human, Mouse, Rat.
Application	Flow Cytometry, IP, IF, IHC, ICC, WB
Clonality	Monoclonal FHA-13
Formulation	Rabbit IgG in phosphate buffered saline, pH 7.4, 150mM NaCl, 0.02% sodium azide and 50% glycerol, 0.4-0.5mg/ml BSA.
Storage Instructions	Store at -20°C for one year. For short term storage and frequent use, store at 4°C for up to one month. Avoid repeated freeze-thaw cycles.
Host	Rabbit
Uniprot ID	P15941

### Technical Details

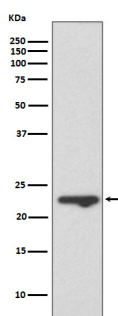
Immunogen	A synthesized peptide derived from human MUC1
Isotype	Rabbit IgG
Form	Liquid
Concentration	Actual concentration vary by lot. Use suggested dilution ratio to decide dilution procedure.
Purification	Affinity-chromatography
Suggested Dilutions	Dilute the sample so that the expected range of concentrations fall within the detection range of this kit. If the expected range of concentration is unknown, a pilot test should be conducted to decide the optimal dilution ratio for your samples. Some PubMed article(s) citing the expression level of this target are as follows: Boster Bio's internal QC testing used:

	WB 1:1000-1:2000 IHC 1:50-1:200 ICC/IF 1:50-1:200 IP 1:20 FC 1:20
--	---

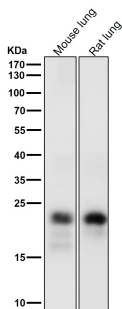
## Anti-MUC1 Rabbit Monoclonal Antibody (M00187-1) Images



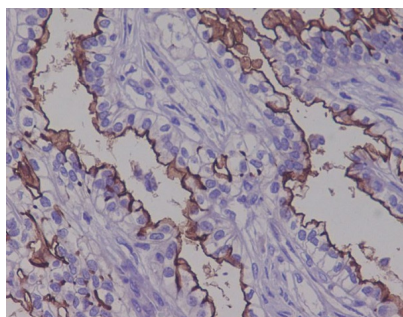
All lanes use the Antibody at 1:3K dilution for 1 hour at room temperature.



Western blot analysis of MUC1 expression in T47 D cell lysate.

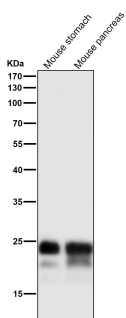


All lanes use the Antibody at 1:5K dilution for 1 hour at room temperature.



Immunohistochemical analysis of paraffin-embedded human ovarian cancer, using MUC1 Antibody.

All lanes use the Antibody at 1:5K dilution for 1 hour at room temperature.



## 1 Publications Citing This Product

1. PubMed ID: 27895759, Globose, cystic olfactory ensheathing cell tumor: A case report and literature review

Visit [bosterbio.com/anti-muc1-rabbit-monoclonal-antibody-m00187-1-boster.html](https://bosterbio.com/anti-muc1-rabbit-monoclonal-antibody-m00187-1-boster.html) to see all 1 publications.

## Submit a product review to Biocompare.com

Submit a review of this product to Biocompare.com to receive a \$20 Amazon.com giftcard! Your reviews help your fellow scientists make the right decisions. Thank you for your contribution.



Anti-MUC1 Rabbit Monoclonal Antibody