

## Anti-Ran Monoclonal Antibody

Catalog Number: M00204

### About RAN

C3 plays a central role in the activation of the complement system. Its processing by C3 convertase is the central reaction in both classical and alternative complement pathways. After activation C3b can bind covalently, via its reactive thioester, to cell surface carbohydrates or immune aggregates.

### Overview

Product Name	Anti-Ran Monoclonal Antibody
Reactive Species	Human, Mouse, Rat
Description	Boster Bio Anti-Ran Monoclonal Antibody catalog # M00204. Tested in WB, ICC/IF, IP, Flow Cytometry applications. This antibody reacts with Human, Mouse, Rat.
Application	Flow Cytometry, IP, IF, ICC, WB
Clonality	Monoclonal ACFI-18
Formulation	Rabbit IgG in phosphate buffered saline, pH 7.4, 150mM NaCl, 0.02% sodium azide and 50% glycerol, 0.4-0.5mg/ml BSA.
Storage Instructions	Store at -20°C for one year. For short term storage and frequent use, store at 4°C for up to one month. Avoid repeated freeze-thaw cycles.
Host	Rabbit
Uniprot ID	P62826

### Technical Details

Immunogen	A synthesized peptide derived from human Ran GTP-binding protein involved in nucleocytoplasmic transport. Required for the import of protein into the nucleus and also for RNA export. Involved in chromatin condensation and control of cell cycle (By similarity) .
Isotype	Rabbit IgG
Form	Liquid
Concentration	Actual concentration vary by lot. Use suggested dilution ratio to decide dilution procedure.
Purification	Affinity-chromatography
Suggested Dilutions	Dilute the sample so that the expected range of concentrations fall within the detection range of this kit. If the expected range of concentration is unknown, a pilot test should be conducted to decide the optimal dilution ratio for your samples.

Some PubMed article(s) citing the expression level of this target are as follows:

Boster Bio's internal QC testing used:

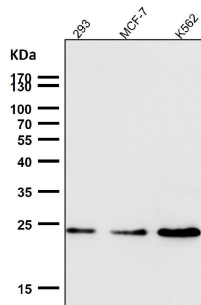
WB 1:500-1:2000

ICC/IF 1:50-1:200

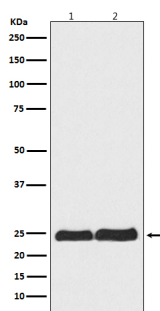
IP 1:50

FC 1:100

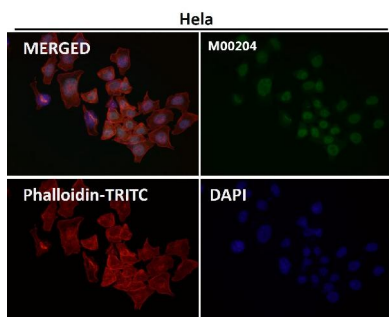
## Anti-Ran Monoclonal Antibody (M00204) Images



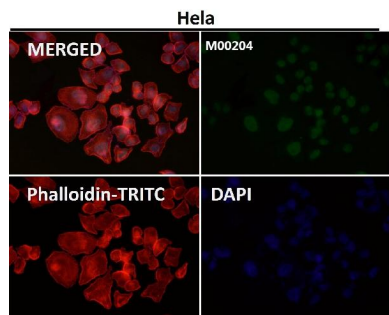
All lanes use the Antibody at 1:1W dilution for 1 hour at room temperature.



Western blot analysis of Ran expression in (1) HeLa cell lysate; (2) RAW264.7 cell lysate.



Immunofluorescent analysis using the Antibody at 1:150 dilution.



Immunofluorescent analysis using the Antibody at 1:500 dilution.

**Submit a product review to Biocompare.com**

Submit a review of this product to Biocompare.com to receive a \$20 Amazon.com giftcard! Your reviews help your fellow scientists make the right decisions. Thank you for your contribution.



## Anti-Ran Monoclonal Antibody