

Anti-ATG5/Apg5 Rabbit Monoclonal Antibody

Catalog Number: M00240

About ATG5

C3 plays a central role in the activation of the complement system. Its processing by C3 convertase is the central reaction in both classical and alternative complement pathways. After activation C3b can bind covalently, via its reactive thioester, to cell surface carbohydrates or immune aggregates.

Overview

Product Name	Anti-ATG5/Apg5 Rabbit Monoclonal Antibody
Reactive Species	Human, Mouse, Rat
Description	Boster Bio Anti-ATG5/Apg5 Rabbit Monoclonal Antibody catalog # M00240. Tested in WB, IHC, ICC/IF, IP applications. This antibody reacts with Human, Mouse, Rat.
Application	IP, IF, IHC, ICC, WB
Clonality	Monoclonal GCD-1
Formulation	Rabbit IgG in phosphate buffered saline, pH 7.4, 150mM NaCl, 0.02% sodium azide and 50% glycerol, 0.4-0.5mg/ml BSA.
Storage Instructions	Store at -20°C for one year. For short term storage and frequent use, store at 4°C for up to one month. Avoid repeated freeze-thaw cycles.
Host	Rabbit
Uniprot ID	Q9H1Y0

Technical Details

Immunogen	A synthesized peptide derived from human ATG5
Isotype	Rabbit IgG
Form	Liquid
Concentration	Actual concentration vary by lot. Use suggested dilution ratio to decide dilution procedure.
Purification	Affinity-chromatography
Suggested Dilutions	<p>Dilute the sample so that the expected range of concentrations fall within the detection range of this kit.</p> <p>If the expected range of concentration is unknown, a pilot test should be conducted to decide the optimal dilution ratio for your samples.</p> <p>Some PubMed article(s) citing the expression level of this target are as follows:</p> <p>Boster Bio's internal QC testing used:</p>

	WB 1:1000-1:2000 IHC 1:50-1:200 ICC/IF 1:50-1:200 IP 1:50
--	--

Anti-ATG5/Apg5 Rabbit Monoclonal Antibody (M00240) Images

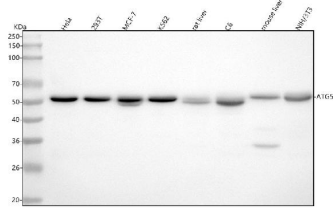
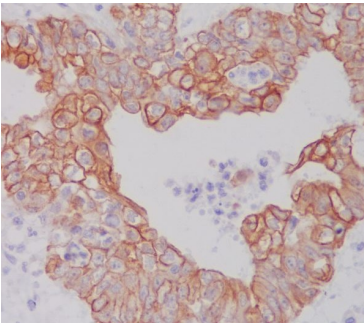


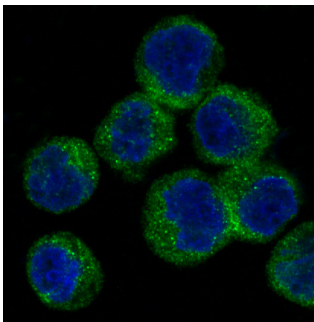
Figure 1. Western blot analysis of ATG5/Apg5 using anti-ATG5/Apg5 antibody (M00240). Electrophoresis was performed on a 5-20% SDS-PAGE gel at 70V (Stacking gel) / 90V (Resolving gel) for 2-3 hours. The sample well of each lane was loaded with 30 ug of sample under reducing conditions.

Lane 1: human Hela whole cell lysates,
Lane 2: human 293T whole cell lysates,
Lane 3: human MCF-7 whole cell lysates,
Lane 4: human K562 whole cell lysates,
Lane 5: rat liver tissue lysates,
Lane 6: rat C6 whole cell lysates,
Lane 7: mouse liver tissue lysates,
Lane 8: mouse NIH/3T3 whole cell lysates.

After electrophoresis, proteins were transferred to a nitrocellulose membrane at 150 mA for 50-90 minutes. Blocked the membrane with 5% non-fat milk/TBS for 1.5 hour at RT. The membrane was incubated with rabbit anti-ATG5/Apg5 antigen affinity purified monoclonal antibody (Catalog # M00240) at 1:1000 overnight at 4°C, then washed with TBS-0.1%Tween 3 times with 5 minutes each and probed with a goat anti-rabbit IgG-HRP secondary antibody at a dilution of 1:5000 for 1.5 hour at RT. The signal is developed using an Enhanced Chemiluminescent detection (ECL) kit (Catalog # EK1002) with Tanon 5200 system. A specific band was detected for ATG5/Apg5 at approximately 55 kDa. The expected band size for ATG5/Apg5 is at 32 kDa.



Immunohistochemical analysis of paraffin-embedded human ovarian cancer, using ATG5 Antibody.



Immunofluorescent analysis of Raji cells, using ATG5 Antibody.

1. PubMed ID: -, Gang Zhong, Huiping Long, Shiting Ma, Yao Shunhan, Jia Li, Jun Yao, miRNA-335-5p relieves chondrocyte inflammation by activating autophagy in osteoarthritis, Life Sciences, Volume 226, 2019, Pages 164-172, ISSN 0024-3205, <https://doi.org/10.1016/j.lfs.2019.03.071>.
2. PubMed ID: 26459718, Anti-autophagic and anti-apoptotic effects of memantine in a SH-SY5Y cell model of Alzheimer's disease via mammalian target of rapamycin-dependent and -independent pathways
3. PubMed ID: 27383629, Nrf2 signalling and autophagy are involved in diabetes mellitus-induced defects in the development of mouse placenta

Visit bosterbio.com/anti-atg5-rabbit-monoclonal-antibody-m00240-boster.html to see all 3 publications.

Submit a product review to Biocompare.com

Submit a review of this product to Biocompare.com to receive a \$20 Amazon.com giftcard! Your reviews help your fellow scientists make the right decisions. Thank you for your contribution.



Anti-ATG5/Apg5 Rabbit Monoclonal Antibody