

## Anti-Ki67 MKI67 Rabbit Monoclonal Antibody

Catalog Number: M00254

### About MKI67

C3 plays a central role in the activation of the complement system. Its processing by C3 convertase is the central reaction in both classical and alternative complement pathways. After activation C3b can bind covalently, via its reactive thioester, to cell surface carbohydrates or immune aggregates.

### Overview

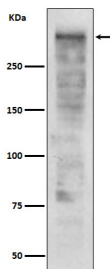
Product Name	Anti-Ki67 MKI67 Rabbit Monoclonal Antibody
Reactive Species	Human
Description	Boster Bio Anti-Ki67 MKI67 Rabbit Monoclonal Antibody catalog # M00254. Tested in WB, IHC, ICC/IF, Flow Cytometry applications. This antibody reacts with Human.
Application	Flow Cytometry, IF, IHC, ICC, WB
Clonality	Monoclonal EAH-13
Formulation	Rabbit IgG in phosphate buffered saline, pH 7.4, 150mM NaCl, 0.02% sodium azide and 50% glycerol, 0.4-0.5mg/ml BSA.
Storage Instructions	Store at -20°C for one year. For short term storage and frequent use, store at 4°C for up to one month. Avoid repeated freeze-thaw cycles.
Host	Rabbit
Uniprot ID	P46013

### Technical Details

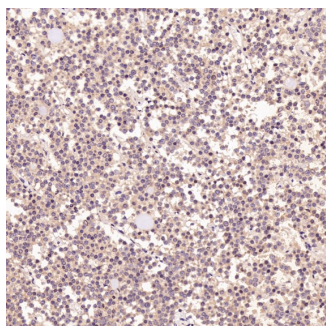
Immunogen	A synthesized peptide derived from human Ki67
Isotype	Rabbit IgG
Form	Liquid
Concentration	Actual concentration vary by lot. Use suggested dilution ratio to decide dilution procedure.
Purification	Affinity-chromatography
Suggested Dilutions	Dilute the sample so that the expected range of concentrations fall within the detection range of this kit. If the expected range of concentration is unknown, a pilot test should be conducted to decide the optimal dilution ratio for your samples. Some PubMed article(s) citing the expression level of this target are as follows: Boster Bio's internal QC testing used:

	WB 1:500-1:2000 IHC 1:50-1:200 ICC/IF 1:50-1:200 FC 1:50
--	---

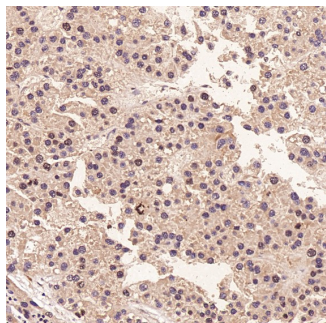
## Anti-Ki67 MKI67 Rabbit Monoclonal Antibody (M00254) Images



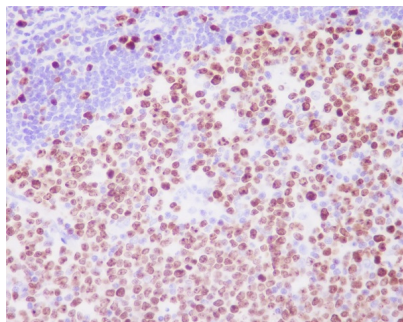
Western blot analysis of Ki67 expression in Ramos cell lysate.



Immunohistochemical analysis of paraffin-embedded Human pituitary tumor, using the Antibody at 1:3000 dilution.

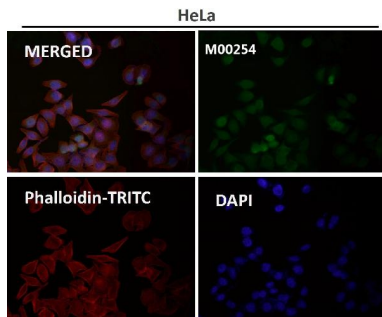
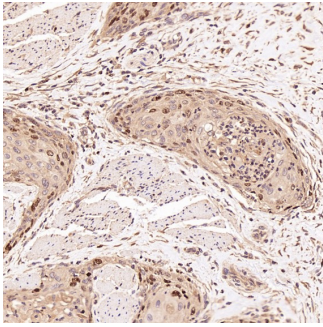


Immunohistochemical analysis of paraffin-embedded Human liver cancer, using the Antibody at 1:3000 dilution.

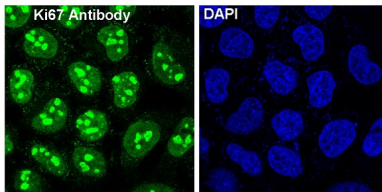


Immunohistochemical analysis of paraffin-embedded human tonsil, using Ki67 Antibody .

Immunohistochemical analysis of paraffin-embedded Human esophageal carcinoma, using the Antibody at 1:3000 dilution.



Immunofluorescent analysis using the Antibody at 1:500 dilution.



Immunofluorescent analysis of HeLa cells, using Ki67 Antibody.

## 23 Publications Citing This Product

1. PubMed ID: 32158357, Yang Z,Zhang J,Lu D,Sun Y, Zhao X,Wang X,Zhou W,He Q,Jiang Z.Hsa\_circ\_0137008 suppresses the malignant phenotype in colorectal cancer by acting as a microRNA-338-5p sponge. Cancer Cell Int.2020 Mar 4;20:67. doi:10.1186/s12935-020-1150-1.PMID:32158357;PMC
2. PubMed ID: 26938295, Tumor-suppressive function of long noncoding RNA MALAT1 in glioma cells by downregulation of MMP2 and inactivation of ERK/MAPK signaling
3. PubMed ID: 23554729, Soy isoflavone extracts stimulate the growth of nude mouse xenografts bearing estrogen-dependent human breast cancer cells (MCF-7)

Visit [bosterbio.com/anti-ki67-rabbit-monoclonal-antibody-m00254-boster.html](https://www.bosterbio.com/anti-ki67-rabbit-monoclonal-antibody-m00254-boster.html) to see all 23 publications.

## Submit a product review to Biocompare.com

Submit a review of this product to Biocompare.com to receive a \$20 Amazon.com giftcard! Your reviews help your fellow scientists make the right decisions. Thank you for your contribution.



Anti-Ki67 MKI67 Rabbit Monoclonal Antibody