

Anti-MITF Antibody

Catalog Number: M00269-3

About MITF

Transcription factor that regulates the expression of genes with essential roles in cell differentiation, proliferation and survival. Binds to symmetrical DNA sequences (E-boxes) (5'- CACGTG-3') found in the promoters of target genes, such as BCL2 and tyrosinase (TYR). Plays an important role in melanocyte development by regulating the expression of tyrosinase (TYR) and tyrosinase-related protein 1 (TYRP1). Plays a critical role in the differentiation of various cell types, such as neural crest- derived melanocytes, mast cells, osteoclasts and optic cup-derived retinal pigment epithelium.

Overview

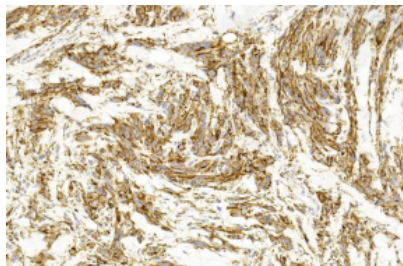
Product Name	Anti-MITF Antibody
Reactive Species	Human, Mouse, Rat
Description	Boster Bio Anti-MITF Antibody (Catalog # M00269-3). Tested in WB application(s). This antibody reacts with Human, Mouse, Rat.
Application	WB
Clonality	Monoclonal 1607CT834.207.47
Formulation	Purified monoclonal antibody supplied in PBS with 0.09% (W/V) sodium azide.
Storage Instructions	Maintain refrigerated at 2-8°C for up to 2 weeks. For long-term storage, store at -20°C in small aliquots to prevent freeze-thaw cycles.
Host	Mouse
Uniprot ID	O75030

Technical Details

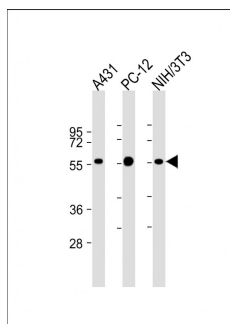
Immunogen	This MITF antibody is generated from a mouse immunized with a recombinant protein of human MITF.
Predicted Reactive Species	Human, Mouse, Rat
Isotype	IgG1,k
Purification	This antibody is purified through a protein G column, followed by dialysis against PBS.
Suggested Dilutions	Dilute the sample so that the expected range of concentrations fall within the detection range of this kit. If the expected range of concentration is unknown, a pilot test should be conducted to decide the optimal dilution ratio for your samples. Some PubMed article(s) citing the expression level of this target are as follows: Boster Bio's internal QC testing used:

	IHC: 1:1000 WB: 1:2000
--	---------------------------

Anti-MITF Antibody (M00269-3) Images



Immunohistochemical analysis of paraffin-embedded Human Melanoma section using Pink1. M00269-3 was diluted at 1:1000 dilution. A undiluted biotinylated goat polyvalent antibody was used as the secondary, followed by DAB staining.



All lanes : Anti-MITF Antibody at 1:2000 dilution

Lane 1: A431 whole cell lysate

Lane 2: PC-12 whole cell lysate

Lane 3: NIH/3T3 whole cell lysate

Lysates/proteins at 20 µg per lane.

Secondary

Goat Anti-mouse IgG, (H+L), Peroxidase conjugated at 1/10000 dilution.

Predicted band size : 59 kDa

Blocking/Dilution buffer: 5% NFDm/TBST.

Submit a product review to Biocompare.com

Submit a review of this product to Biocompare.com to receive a \$20 Amazon.com giftcard! Your reviews help your fellow scientists make the right decisions. Thank you for your contribution.



Anti-MITF Antibody