

## Anti-MEK1/2 MAP2K1 Rabbit Monoclonal Antibody

Catalog Number: M00292-1

### About MAP2K1

C3 plays a central role in the activation of the complement system. Its processing by C3 convertase is the central reaction in both classical and alternative complement pathways. After activation C3b can bind covalently, via its reactive thioester, to cell surface carbohydrates or immune aggregates.

### Overview

Product Name	Anti-MEK1/2 MAP2K1 Rabbit Monoclonal Antibody
Reactive Species	Human, Mouse, Rat
Description	Boster Bio Anti-MEK1/2 MAP2K1 Rabbit Monoclonal Antibody catalog # M00292-1. Tested in WB, IHC, ICC/IF, IP applications. This antibody reacts with Human, Mouse, Rat.
Application	IP, IF, IHC, ICC, WB
Clonality	Monoclonal BOA-13
Formulation	Rabbit IgG in phosphate buffered saline, pH 7.4, 150mM NaCl, 0.02% sodium azide and 50% glycerol, 0.4-0.5mg/ml BSA.
Storage Instructions	Store at -20°C for one year. For short term storage and frequent use, store at 4°C for up to one month. Avoid repeated freeze-thaw cycles.
Host	Rabbit
Uniprot ID	Q02750/P36507

### Technical Details

Immunogen	A synthesized peptide derived from human MEK1/2
Isotype	Rabbit IgG
Form	Liquid
Concentration	Actual concentration vary by lot. Use suggested dilution ratio to decide dilution procedure.
Purification	Affinity-chromatography
Suggested Dilutions	Dilute the sample so that the expected range of concentrations fall within the detection range of this kit. If the expected range of concentration is unknown, a pilot test should be conducted to decide the optimal dilution ratio for your samples. Some PubMed article(s) citing the expression level of this target are as follows: Boster Bio's internal QC testing used:

	WB 1:5000-1:10000 IHC 1:100-1:500 ICC/IF 1:50-1:100 IP 1:50-1:100
--	--

## Anti-MEK1/2 MAP2K1 Rabbit Monoclonal Antibody (M00292-1) Images

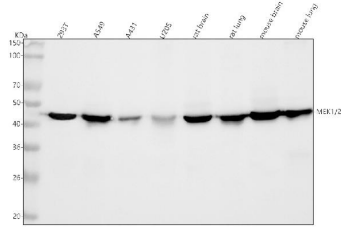


Figure 1. Western blot analysis of MEK1-2 using anti-MEK1-2 antibody (M00292-1).

Electrophoresis was performed on a 5-20% SDS-PAGE gel at 70V (Stacking gel) / 90V (Resolving gel) for 2-3 hours. The sample well of each lane was loaded with 30 ug of sample under reducing conditions.

Lane 1: human 293T whole cell lysates,

Lane 2: human A549 whole cell lysates,

Lane 3: human A431 whole cell lysates,

Lane 4: human U2OS whole cell lysates,

Lane 5: rat brain tissue lysates,

Lane 6: rat lung tissue lysates,

Lane 7: mouse brain tissue lysates,

Lane 8: mouse lung tissue lysates.

After electrophoresis, proteins were transferred to a nitrocellulose membrane at 150 mA for 50-90 minutes.

Blocked the membrane with 5% non-fat milk/TBS for 1.5

hour at RT. The membrane was incubated with rabbit anti-

MEK1-2 antigen affinity purified monoclonal antibody

(Catalog # M00292-1) at 1:5000 overnight at 4°C, then

washed with TBS-0.1%Tween 3 times with 5 minutes each

and probed with a goat anti-rabbit IgG-HRP secondary

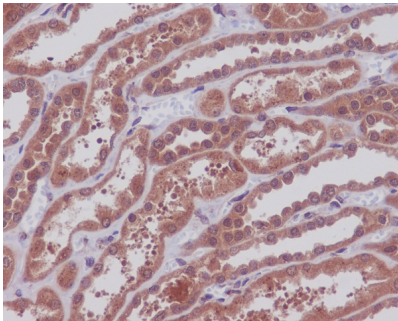
antibody at a dilution of 1:500 for 1.5 hour at RT. The signal

is developed using an Enhanced Chemiluminescent

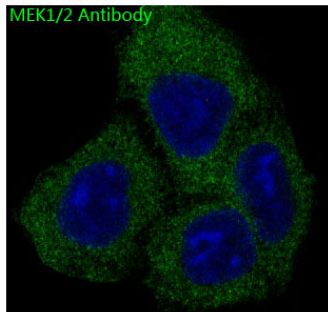
detection (ECL) kit (Catalog # EK1002) with Tanon 5200

system. A specific band was detected for MEK1-2 at

approximately 43 kDa. The expected band size for MEK1-2 is at 43 kDa.

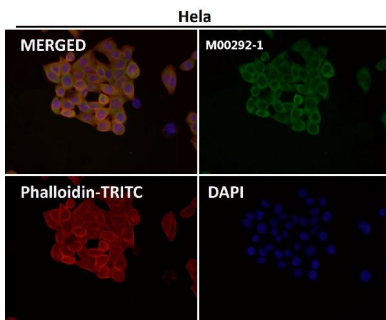


Immunohistochemical analysis of paraffin-embedded human kidney, using MEK1/2 Antibody.

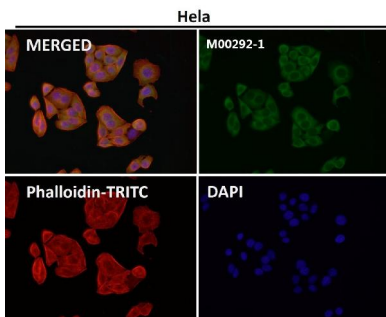


Immunofluorescent analysis of HeLa cells, using MEK1/2 Antibody .

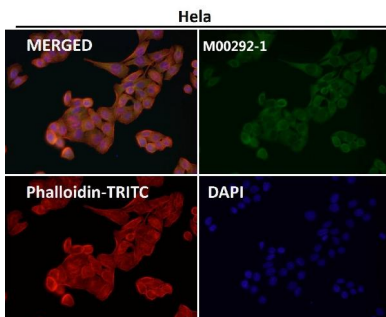
Immunofluorescent analysis using the Antibody at 1:50



dilution.



Immunofluorescent analysis using the Antibody at 1:150 dilution.



Immunofluorescent analysis using the Antibody at 1:500 dilution.

## Submit a product review to Biocompare.com

Submit a review of this product to Biocompare.com to receive a \$20 Amazon.com giftcard! Your reviews help your fellow scientists make the right decisions. Thank you for your contribution.



Anti-MEK1/2 MAP2K1 Rabbit Monoclonal Antibody