

Anti-ALK (Anaplastic Lymphoma Kinase) / CD246 Monoclonal Antibody

Catalog Number: M00301

About ALK

The wild-type anaplastic lymphoma kinase (ALK) protein is a 200kDa transmembrane receptor tyrosine kinase. Its expression is restricted to a few scattered cells in the nervous system (some glial cells and neurons, and a few endothelial cells and pericytes. The hybrid gene, NPM-ALK, created by the t(2;5)(p23;q35) chromosomal translocation encodes part of the nucleolar phosphoprotein, nucleophosmin (NPM), joined to the entire cytoplasmic portion of the anaplastic lymphoma kinase (ALK) receptor tyrosine kinase. As a consequence, the ALK gene comes under the control of the NPM promoter, which induces a permanent and ubiquitous transcription of the NPM-ALK hybrid gene, resulting in the production of a 80kDa NPM-ALK chimeric protein. This translocation is found in anaplastic large cell lymphomas (ALCL). Reportedly, expression of ALK indicates a better prognosis. Approximately 5%-10% of non-small cell lung carcinomas also express ALK protein producing a cytoplasmic staining pattern. This monoclonal antibody also reacts with blood vessels that serves as an internal positive control.

Overview

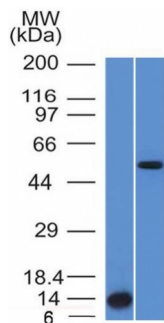
| | |
|----------------------|--|
| Product Name | Anti-ALK (Anaplastic Lymphoma Kinase) / CD246 Monoclonal Antibody |
| Reactive Species | Human |
| Description | Boster Bio Anti-ALK (Anaplastic Lymphoma Kinase) / CD246 Monoclonal Antibody (Catalog # M00301). Tested in Flow Cytometry, IF, WB applications. This antibody reacts with Human. |
| Conjugate | Biotin |
| Application | Flow Cytometry, IF, WB |
| Clonality | Monoclonal Clone: ALK/1503 |
| Formulation | Prepared in 10mM PBS with 0.05% BSA & 0.05% azide. Also available WITHOUT BSA & azide at 1.0mg/ml. |
| Storage Instructions | Antibody with azide - store at 2 to 8 °C. Antibody without azide - store at -20 to -80 °C. Antibody is stable for 24 months. Non-hazardous. No MSDS required. |
| Host | Mouse |
| Uniprot ID | Q9UM73 |

Technical Details

| | |
|----------------------------|--|
| Immunogen | Recombinant human ALK protein fragment (aa1360-1460) |
| Predicted Reactive Species | Bovine, Canine, Mouse, Orangutan, Pig, Rabbit, Rat, Deer |
| Isotype | IgG1, kappa |
| Form | Liquid |

| | |
|---------------------|--|
| Concentration | Purified antibody with BSA and azide at 200ug/ml |
| Purification | 200ug/ml of antibody purified from Bioreactor Concentrate by Protein A/G. |
| Suggested Dilutions | <p>Dilute the sample so that the expected range of concentrations fall within the detection range of this kit.</p> <p>If the expected range of concentration is unknown, a pilot test should be conducted to decide the optimal dilution ratio for your samples.</p> <p>Some PubMed article(s) citing the expression level of this target are as follows:</p> <p>Boster Bio's internal QC testing used:</p> <p>Flow Cytometry (0.5-1ug/million cells)</p> <p>Immunofluorescence (0.5-1ug/ml)</p> <p>Western Blotting (0.5-1ug/ml)</p> <p>Optimal dilution for a specific application should be determined.</p> |

Anti-ALK (Anaplastic Lymphoma Kinase) / CD246 Monoclonal Antibody (M00301) Images



Western Blot Analysis (A) Recombinant Protein (B) HepG2 Cell lysate Using Anti-ALK-1 Monoclonal Antibody (ALK/1503).

Submit a product review to Biocompare.com

Submit a review of this product to Biocompare.com to receive a \$20 Amazon.com giftcard! Your reviews help your fellow scientists make the right decisions. Thank you for your contribution.



Anti-ALK (Anaplastic Lymphoma Kinase) / CD246 Monoclonal Antibody