

Anti-Beclin 1 BECN1 Monoclonal Antibody

Catalog Number: M00327

About BECN1

C3 plays a central role in the activation of the complement system. Its processing by C3 convertase is the central reaction in both classical and alternative complement pathways. After activation C3b can bind covalently, via its reactive thioester, to cell surface carbohydrates or immune aggregates.

Overview

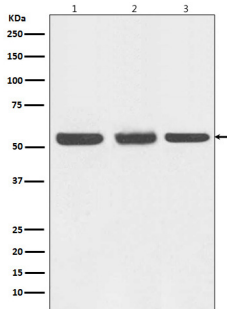
Product Name	Anti-Beclin 1 BECN1 Monoclonal Antibody
Reactive Species	Human, Mouse, Rat
Description	Boster Bio Anti-Beclin 1 BECN1 Monoclonal Antibody catalog # M00327. Tested in WB, IHC, ICC/IF applications. This antibody reacts with Human, Mouse, Rat.
Application	IF, IHC, ICC, WB
Clonality	Monoclonal ADA-2
Formulation	Rabbit IgG in phosphate buffered saline, pH 7.4, 150mM NaCl, 0.02% sodium azide and 50% glycerol, 0.4-0.5mg/ml BSA.
Storage Instructions	Store at -20°C for one year. For short term storage and frequent use, store at 4°C for up to one month. Avoid repeated freeze-thaw cycles.
Host	Rabbit
Uniprot ID	Q14457

Technical Details

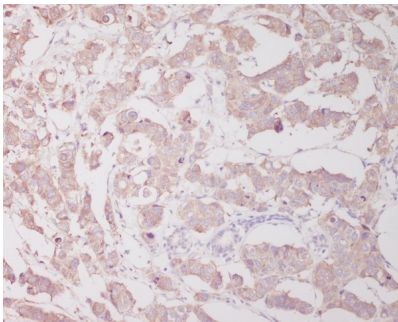
Immunogen	A synthesized peptide derived from human Beclin 1
Isotype	Rabbit IgG
Form	Liquid
Concentration	Actual concentration vary by lot. Use suggested dilution ratio to decide dilution procedure.
Purification	Affinity-chromatography
Suggested Dilutions	Dilute the sample so that the expected range of concentrations fall within the detection range of this kit. If the expected range of concentration is unknown, a pilot test should be conducted to decide the optimal dilution ratio for your samples. Some PubMed article(s) citing the expression level of this target are as follows: Boster Bio's internal QC testing used:

	WB 1:500-1:2000 IHC 1:50-1:200 ICC/IF 1:50-1:200
--	--

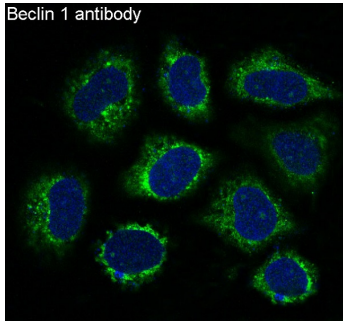
Anti-Beclin 1 BECN1 Monoclonal Antibody (M00327) Images



Western blot analysis of Beclin 1 expression in (1) HEK293 cell lysate; (2) NIH/3T3 cell lysate; (3) C6 cell lysate.



Immunohistochemical analysis of paraffin-embedded human breast cancer, using Beclin 1 Antibody.



Immunofluorescent analysis of HeLa cells, using Beclin 1 Antibody.

5 Publications Citing This Product

1. PubMed ID: 33529908, Ni K, Hua Y. Hydrogen sulfide exacerbated periodontal inflammation and induced autophagy in experimental periodontitis. *Int Immunopharmacol*. 2021 Jan 30;93:107399. doi:10.1016/j.intimp.2021.107399. Epub ahead of print. PMID:33529908.
2. PubMed ID: 31900522, Song L, Yao L, Zhang L, Piao Z, Lu Y. Schizandrol A protects against Aβ₁₋₄₂-induced autophagy via activation of PI3K/AKT/mTOR pathway in SH-SY5Y cells and primary hippocampal neurons. *Naunyn-Schmiedeberg's Arch Pharmacol*. 2020 Sep;393(9):1739-1752. doi:10.1007/s00
3. PubMed ID: 27464624, Bifidobacterial recombinant thymidine kinase-ganciclovir gene therapy system induces FasL and TNFR2 mediated antitumor apoptosis in solid tumors

Visit [bosterbio.com/anti-beclin-1-antibody-m00327-boster.html](https://www.bosterbio.com/anti-beclin-1-antibody-m00327-boster.html) to see all 5 publications.

Submit a product review to Biocompare.com

Submit a review of this product to Biocompare.com to receive a \$20 Amazon.com giftcard! Your reviews help your fellow scientists make the right decisions. Thank you for your contribution.



Anti-Beclin 1 BECN1 Monoclonal Antibody