

## Anti-Calpastatin (CAST) Mouse Monoclonal Antibody [Clone ID: OTI1E7]

Catalog Number: M00337

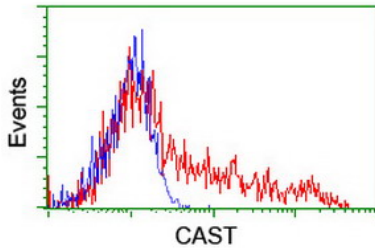
### Overview

Product Name	Anti-Calpastatin (CAST) Mouse Monoclonal Antibody [Clone ID: OTI1E7]
Reactive Species	Human
Description	Boster Bio CAST (Calpastatin) mouse monoclonal antibody, clone OTI1E7 (formerly 1E7). Catalog# M00337. Tested in FC, IHC, WB. This antibody reacts with Human.
Conjugate	Unconjugated
Application	Flow Cytometry, IHC, WB
Clonality	Monoclonal OTI1E7
Formulation	PBS (PH 7.3) containing 1% BSA, 50% glycerol and 0.02% sodium azide.
Storage Instructions	Store at -20°C for one year. For short term storage and frequent use, store at 4°C for up to one month. Avoid repeated freeze-thaw cycles.
Host	Mouse
Uniprot ID	P20810

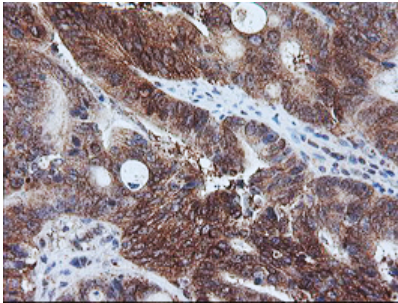
### Technical Details

Immunogen	A synthetic peptide corresponding to a sequence in the middle region of human Calpastatin, different from the related mouse sequence by fifteen amino acids, and from the related rat sequence by eleven amino acids.
Isotype	IgG1
Concentration	0.62 mg/ml
Purification	Purified from mouse ascites fluids or tissue culture supernatant by affinity chromatography (protein A/G)
Suggested Dilutions	Dilute the sample so that the expected range of concentrations fall within the detection range of this kit. If the expected range of concentration is unknown, a pilot test should be conducted to decide the optimal dilution ratio for your samples. Some PubMed article(s) citing the expression level of this target are as follows:

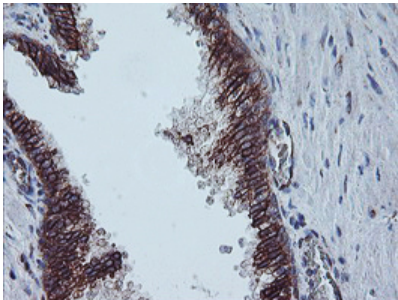
## Anti-Calpastatin (CAST) Mouse Monoclonal Antibody [Clone ID: OTI1E7] (M00337) Images



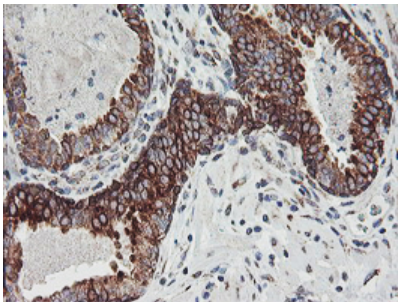
HEK293T cells transfected with either CAST (Myc-DDK-tagged) overexpress plasmid (Red) or empty vector control plasmid (Blue) were immunostained by anti-CAST antibody (M00337)



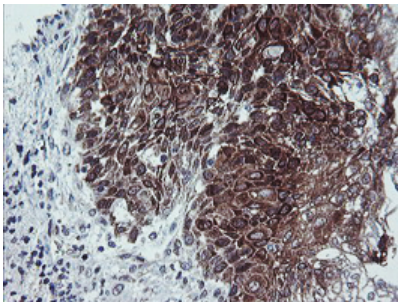
Immunohistochemical staining of paraffin-embedded Carcinoma of Human pancreas tissue using anti-CAST mouse monoclonal antibody. (Heat-induced epitope retrieval by 10mM citric buffer)



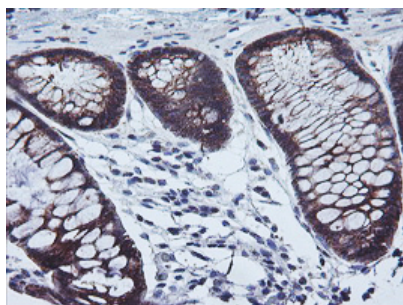
Immunohistochemical staining of paraffin-embedded Human prostate tissue within the normal limits using anti-CAST mouse monoclonal antibody. (Heat-induced epitope retrieval by 10mM citric buffer)



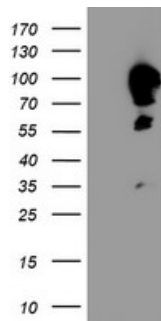
Immunohistochemical staining of paraffin-embedded Carcinoma of Human prostate tissue using anti-CAST mouse monoclonal antibody. (Heat-induced epitope retrieval by 10mM citric buffer)



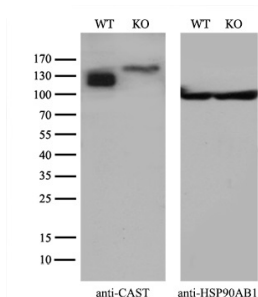
Immunohistochemical staining of paraffin-embedded Carcinoma of Human bladder tissue using anti-CAST mouse monoclonal antibody. (Heat-induced epitope retrieval by 10mM citric buffer)



Immunohistochemical staining of paraffin-embedded Human colon tissue within the normal limits using anti-CAST mouse monoclonal antibody. (Heat-induced epitope retrieval by 10mM citric buffer)



HEK293T cells were transfected with the pCMV6-ENTRY control (Left lane) or pCMV6-ENTRY CAST (Right lane) cDNA for 48 hrs and lysed. Equivalent amounts of cell lysates (5 ug per lane) were separated by SDS-PAGE and immunoblotted with anti-CAST.



Equivalent amounts of cell lysates (10 ug per lane) of wild-type Hela cells (WT) and CAST-Knockout Hela cells (KO) were separated by SDS-PAGE and immunoblotted with anti-CAST monoclonal antibody M00337

## Submit a product review to Biocompare.com

Submit a review of this product to Biocompare.com to receive a \$20 Amazon.com giftcard! Your reviews help your fellow scientists make the right decisions. Thank you for your contribution.



Anti-Calpastatin (CAST) Mouse Monoclonal Antibody [Clone ID: OTI1E7]