

## Anti-Leptin Receptor LEPR Rabbit Monoclonal Antibody

Catalog Number: M00350

### About LEPR

C3 plays a central role in the activation of the complement system. Its processing by C3 convertase is the central reaction in both classical and alternative complement pathways. After activation C3b can bind covalently, via its reactive thioester, to cell surface carbohydrates or immune aggregates.

### Overview

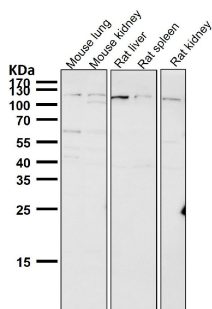
Product Name	Anti-Leptin Receptor LEPR Rabbit Monoclonal Antibody
Reactive Species	Human, Mouse, Rat
Description	Boster Bio Anti-Leptin Receptor LEPR Rabbit Monoclonal Antibody catalog # M00350. Tested in WB application. This antibody reacts with Human, Mouse, Rat.
Application	WB
Clonality	Monoclonal ABDO-12
Formulation	Rabbit IgG in phosphate buffered saline, pH 7.4, 150mM NaCl, 0.02% sodium azide and 50% glycerol, 0.4-0.5mg/ml BSA.
Storage Instructions	Store at -20°C for one year. For short term storage and frequent use, store at 4°C for up to one month. Avoid repeated freeze-thaw cycles.
Host	Rabbit
Uniprot ID	P48357

### Technical Details

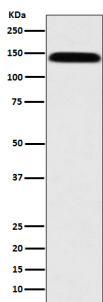
Immunogen	A synthesized peptide derived from human Leptin Receptor
Isotype	Rabbit IgG
Form	Liquid
Concentration	Actual concentration vary by lot. Use suggested dilution ratio to decide dilution procedure.
Purification	Affinity-chromatography
Suggested Dilutions	Dilute the sample so that the expected range of concentrations fall within the detection range of this kit. If the expected range of concentration is unknown, a pilot test should be conducted to decide the optimal dilution ratio for your samples. Some PubMed article(s) citing the expression level of this target are as follows: Boster Bio's internal QC testing used:

	WB 1:500-1:2000
--	-----------------

## Anti-Leptin Receptor LEPR Rabbit Monoclonal Antibody (M00350) Images



All lanes use the Antibody at 1:1K dilution for 1 hour at room temperature.



Western blot analysis of Leptin Receptor expression in SH-SY5Y cell lysate.

## 2 Publications Citing This Product

1. PubMed ID: 33128919, Srinivasan G, Parida S, Pavithra S, Panigrahi M, Sahoo M, Singh TU, Madhu CL, Manickam K, Shyamkumar TS, Kumar D, Mishra SK. Leptin receptor stimulation in late pregnant mouse uterine tissue inhibits spontaneous contractions by increasing NO and cGMP. Cytokine. 2021

2. PubMed ID: 26529315, The Influence of LepR Tyrosine Site Mutations on Mouse Ovary Development and Related Gene Expression Changes

Visit [bosterbio.com/anti-leptin-receptor-rabbit-monoclonal-antibody-m00350-boster.html](https://www.bosterbio.com/anti-leptin-receptor-rabbit-monoclonal-antibody-m00350-boster.html) to see all 2 publications.

## Submit a product review to Biocompare.com

Submit a review of this product to Biocompare.com to receive a \$20 Amazon.com giftcard! Your reviews help your fellow scientists make the right decisions. Thank you for your contribution.



Anti-Leptin Receptor LEPR Rabbit Monoclonal Antibody