

## Anti-CEA (CD66e) CEACAM5 Rabbit Monoclonal Antibody

Catalog Number: M00356-1

### About CEACAM5

C3 plays a central role in the activation of the complement system. Its processing by C3 convertase is the central reaction in both classical and alternative complement pathways. After activation C3b can bind covalently, via its reactive thioester, to cell surface carbohydrates or immune aggregates.

### Overview

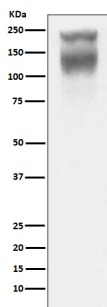
Product Name	Anti-CEA (CD66e) CEACAM5 Rabbit Monoclonal Antibody
Reactive Species	Human
Description	Boster Bio Anti-CEA (CD66e) CEACAM5 Rabbit Monoclonal Antibody catalog # M00356-1. Tested in WB, IHC, ICC/IF applications. This antibody reacts with Human.
Application	IF, IHC, ICC, WB
Clonality	Monoclonal AAOA-3
Formulation	Rabbit IgG in phosphate buffered saline, pH 7.4, 150mM NaCl, 0.02% sodium azide and 50% glycerol, 0.4-0.5mg/ml BSA.
Storage Instructions	Store at -20°C for one year. For short term storage and frequent use, store at 4°C for up to one month. Avoid repeated freeze-thaw cycles.
Host	Rabbit
Uniprot ID	P06731

### Technical Details

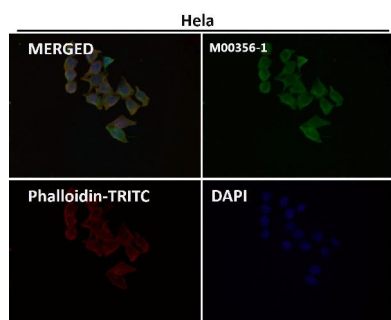
Immunogen	A synthesized peptide derived from human CEA (CD66e)
Isotype	Rabbit IgG
Form	Liquid
Concentration	Actual concentration vary by lot. Use suggested dilution ratio to decide dilution procedure.
Purification	Affinity-chromatography
Suggested Dilutions	Dilute the sample so that the expected range of concentrations fall within the detection range of this kit. If the expected range of concentration is unknown, a pilot test should be conducted to decide the optimal dilution ratio for your samples. Some PubMed article(s) citing the expression level of this target are as follows: Boster Bio's internal QC testing used:

	WB 1:500-1:2000 IHC 1:50-1:200 ICC/IF 1:50-1:200
--	--

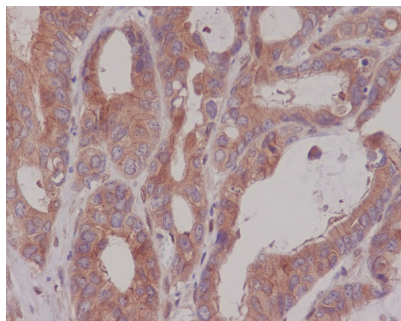
## Anti-CEA (CD66e) CEACAM5 Rabbit Monoclonal Antibody (M00356-1) Images



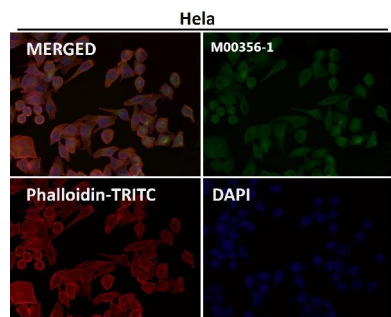
Western blot analysis of CEA(CD66e) expression in Human colon cancer lysate.



Immunofluorescent analysis using the Antibody at 1:50 dilution.

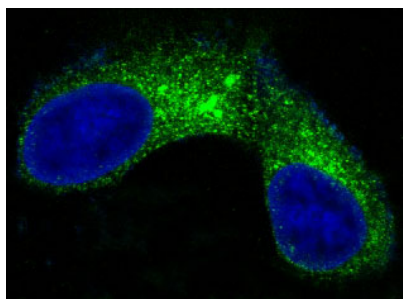


Immunohistochemical analysis of paraffin-embedded human colon carcinoma, using CEA(CD66e) Antibody.



Immunofluorescent analysis using the Antibody at 1:150 dilution.

Immunofluorescent analysis of MCF-7 cells, using CEA(CD66e) Antibody.



## Submit a product review to Biocompare.com

Submit a review of this product to Biocompare.com to receive a \$20 Amazon.com giftcard! Your reviews help your fellow scientists make the right decisions. Thank you for your contribution.



Anti-CEA (CD66e) CEACAM5 Rabbit Monoclonal Antibody