

## Anti-GST3/GST pi GSTP1 Rabbit Monoclonal Antibody, Clone#RM347

Catalog Number: M00394-2

### Overview

Product Name	Anti-GST3/GST pi GSTP1 Rabbit Monoclonal Antibody, Clone#RM347
Reactive Species	Human
Description	Boster Bio Anti-GST3/GST pi GSTP1 Rabbit Monoclonal Antibody, Clone#RM347 (Catalog # M00394-2). Tested in IHC, WB applications. This antibody reacts with Human.
Application	IHC, WB
Clonality	Monoclonal RM347
Formulation	50% Glycerol/PBS with 1% BSA and 0.09% sodium azide
Storage Instructions	Store at -20°C for one year. Avoid repeated freeze-thaw cycles.
Host	Rabbit
Uniprot ID	P09211

### Technical Details

Immunogen	A peptide corresponding to the C-terminus of human GST3/GST-pi.
Cross Reactivity	This antibody reacts to human GST3/GST-pi (Glutathione S-transferase P).
Isotype	Rabbit IgG
Form	Liquid
Concentration	0.5-1mg/ml, actual concentration vary by lot. Use suggested dilution ratio to decide dilution procedure.
Purification	Protein A affinity purified from an animal origin-free culture supernatant
Suggested Dilutions	<p>Dilute the sample so that the expected range of concentrations fall within the detection range of this kit.</p> <p>If the expected range of concentration is unknown, a pilot test should be conducted to decide the optimal dilution ratio for your samples.</p> <p>Some PubMed article(s) citing the expression level of this target are as follows:</p> <p>Boster Bio's internal QC testing used:</p> <p>Immunohistochemistry (IHC): 1:1000-1:20000 dilution</p> <p>WB: 1:1000-1:2000 dilution.</p>

## Anti-GST3/GST pi GSTP1 Rabbit Monoclonal Antibody, Clone#RM347 (M00394-2) Images

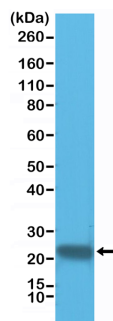


Figure 1. Western Blotting result  
Western Blot of HeLa cell lysate using anti-GSTP1 rabbit monoclonal antibody (Clone RM347) at a 1:1000 dilution.

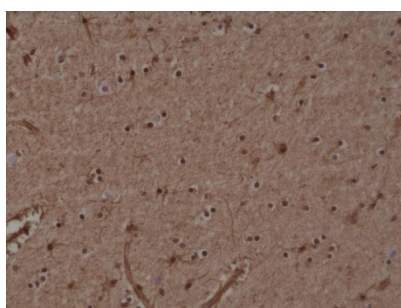


Figure 2. IHC result  
Immunohistochemical staining of formalin fixed and paraffin embedded human Brain tissue section using anti-GSTP1 rabbit monoclonal antibody (Clone RM347) at a 1:20000 dilution.

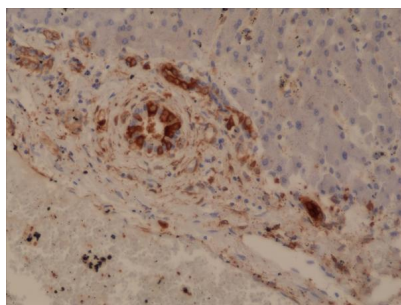


Figure 3. IHC result  
Immunohistochemical staining of formalin fixed and paraffin embedded human Liver tissue section using anti-GSTP1 rabbit monoclonal antibody (Clone RM347) at a 1:20000 dilution.

## 1 Publications Citing This Product

1. PubMed ID: 30321868, Glutathione S-Transferases and Cytochrome P450 enzyme expression in patients with Intracranial Tumors: Preliminary Report of 55 Patients

Visit [bosterbio.com/anti-gst3-gst-pi-rabbit-monoclonal-antibody-clone-rm347-m00394-2-boster.html](http://bosterbio.com/anti-gst3-gst-pi-rabbit-monoclonal-antibody-clone-rm347-m00394-2-boster.html) to see all 1 publications.

## Submit a product review to Biocompare.com

Submit a review of this product to Biocompare.com to receive a \$20 Amazon.com giftcard! Your reviews help your fellow scientists make the right decisions. Thank you for your contribution.



Anti-GST3/GST pi GSTP1 Rabbit Monoclonal Antibody, Clone#RM347