

## Anti-CK-5/CK-6 (Cytokeratin 5/ Cytokeratin 6) Rabbit Monoclonal Antibody, Clone#RM341

Catalog Number: M00398-4

### Overview

Product Name	Anti-CK-5/CK-6 (Cytokeratin 5/ Cytokeratin 6) Rabbit Monoclonal Antibody, Clone#RM341
Reactive Species	Human
Description	Boster Bio Anti-CK-5/CK-6 (Cytokeratin 5/ Cytokeratin 6) Rabbit Monoclonal Antibody, Clone#RM341 (Catalog # M00398-4). Tested in IHC, WB applications. This antibody reacts with Human.
Application	IHC, WB
Clonality	Monoclonal RM341
Formulation	50% Glycerol/PBS with 1% BSA and 0.09% sodium azide
Storage Instructions	Store at -20°C for one year. Avoid repeated freeze-thaw cycles.
Host	Rabbit
Uniprot ID	P13647

### Technical Details

Immunogen	A peptide corresponding to the C-terminus of Human Cytokeratin 5
Cross Reactivity	This antibody reacts to both human CK-5 (Cytokeratin 5) and CK-6 (Cytokeratin 6).
Isotype	Rabbit IgG
Form	Liquid
Concentration	0.5-1mg/ml, actual concentration vary by lot. Use suggested dilution ratio to decide dilution procedure.
Purification	Protein A affinity purified from an animal origin-free culture supernatant
Suggested Dilutions	<p>Dilute the sample so that the expected range of concentrations fall within the detection range of this kit.</p> <p>If the expected range of concentration is unknown, a pilot test should be conducted to decide the optimal dilution ratio for your samples.</p> <p>Some PubMed article(s) citing the expression level of this target are as follows:</p> <p>Boster Bio's internal QC testing used:</p> <p>Immunohistochemistry (IHC): 1:500 - 1:1000 dilution</p> <p>WB: 1:2000-1:4000 dilution.</p>



## Anti-CK-5/CK-6 (Cytokeratin 5/ Cytokeratin 6) Rabbit Monoclonal Antibody, Clone#RM341 (M00398-4) Images

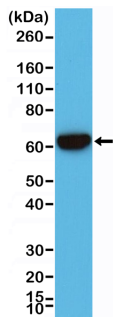


Figure 1. Western Blotting result  
Western Blot of A431 cell lysates using RM341 using anti-CK-5/CK-6 rabbit monoclonal antibody (Clone RM341) at a 1:2000 dilution.

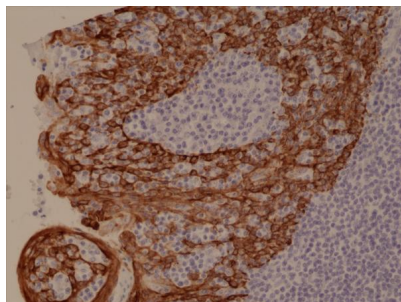


Figure 2. IHC result  
Immunohistochemical staining of formalin fixed and paraffin embedded human tonsil tissue section using anti-CK-5/CK-6 rabbit monoclonal antibody (Clone RM341) at a 1:1000 dilution.

### Submit a product review to Biocompare.com

Submit a review of this product to Biocompare.com to receive a \$20 Amazon.com giftcard! Your reviews help your fellow scientists make the right decisions. Thank you for your contribution.



Anti-CK-5/CK-6 (Cytokeratin 5/ Cytokeratin 6) Rabbit Monoclonal Antibody, Clone#RM341