

Anti-Macrophage L1 Protein S100A8 Monoclonal Antibody

Catalog Number: M00413

About S100A8 & S100A9

Recognizes the L1 or Calprotectin molecule, an intra-cytoplasmic antigen comprising of a 12kDa alpha chain and a 14kDa beta chain expressed by granulocytes, monocytes and by tissue macrophages. Macrophages usually arise from hematopoietic stem cells in the bone marrow. Under migration into tissues, the monocytes undergo further differentiation to become multifunctional tissue macrophages. They are classified into normal and inflammatory macrophages. Normal macrophages include macrophages in connective tissue (histiocytes), liver (Kupffer's cells), lung (alveolar macrophages), lymph nodes (free and fixed macrophages), spleen (free and fixed macrophages), bone marrow (fixed macrophages), serous fluids (pleural and peritoneal macrophages), skin (histiocytes, Langerhans's cell) and in other tissues. Inflammatory macrophages are present in various exudates. Macrophages are part of the innate immune system, recognizing, engulfing and destroying many potential pathogens including bacteria, pathogenic protozoa, fungi and helminthes. This monoclonal antibody reacts with neutrophils, monocytes, macrophages, and squamous mucosal epithelia and has been shown as an important marker for identifying macrophages in tissue sections.

Overview

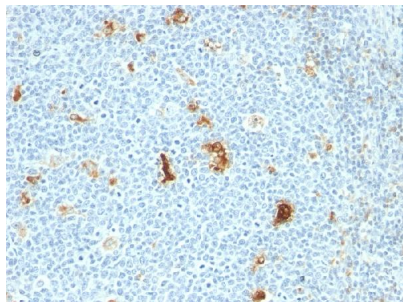
Product Name	Anti-Macrophage L1 Protein S100A8 Monoclonal Antibody
Reactive Species	Cow, Dog, Goat, Guinea pig, Human, Monkey, Mouse, Pig, Rabbit, Rat, Horse, Cat, Baboon
Description	Boster Bio Anti-Macrophage L1 Protein S100A8 Monoclonal Antibody (Catalog # M00413). Tested in Flow Cytometry, IF, IHC applications. This antibody reacts with Human, Baboon, Monkey, Cow, Pig, Goat, Horse, Cat, Dog, Rabbit, Guinea pig, Rat, Mouse.
Conjugate	Biotin
Application	Flow Cytometry, IF, IHC
Clonality	Monoclonal Clone: SPM281
Formulation	Prepared in 10mM PBS with 0.05% BSA & 0.05% azide. Also available WITHOUT BSA & azide at 1.0mg/ml.
Storage Instructions	Antibody with azide - store at 2 to 8°C. Antibody without azide - store at -20 to -80°C. Antibody is stable for 24 months. Non-hazardous. No MSDS required.
Host	Mouse
Uniprot ID	P05109; P06702

Technical Details

Immunogen	Affinity Purified monocyte membrane preparation
Predicted Reactive Species	Bovine, Canine, Mouse, Orangutan, Pig, Rabbit, Rat, Deer
Isotype	IgG1, kappa

Form	Liquid
Concentration	Purified antibody with BSA and azide at 200ug/ml
Purification	200ug/ml of antibody purified from Bioreactor Concentrate by Protein A/G.
Suggested Dilutions	<p>Dilute the sample so that the expected range of concentrations fall within the detection range of this kit.</p> <p>If the expected range of concentration is unknown, a pilot test should be conducted to decide the optimal dilution ratio for your samples.</p> <p>Some PubMed article(s) citing the expression level of this target are as follows:</p> <p>Boster Bio's internal QC testing used:</p> <p>Flow Cytometry (1-2ug/million cells)</p> <p>Immunofluorescence (1-2ug/ml)</p> <p>Immunohistochemistry (Formalin-fixed) (1-2ug/ml for 30 minutes at RT)(Staining of formalin-fixed tissues requires heating tissue sections in 10mM Tris with 1mM EDTA, pH 9.0, for 45 min at 95&degC followed by cooling at RT for 20 minutes)</p> <p>Optimal dilution for a specific application should be determined.</p>

Anti-Macrophage L1 Protein S100A8 Monoclonal Antibody (M00413) Images



Formalin-fixed, paraffin-embedded human Tonsil stained with Anti-Macrophage L1 Protein Monoclonal Antibody (SPM281)

Submit a product review to Biocompare.com

Submit a review of this product to Biocompare.com to receive a \$20 Amazon.com giftcard! Your reviews help your fellow scientists make the right decisions. Thank you for your contribution.



Anti-Macrophage L1 Protein S100A8 Monoclonal Antibody