

## Anti-CTLA-8 / IL-17a Reference Antibody (netakimab)

Catalog Number: M00421-9

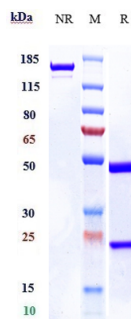
### Overview

|                      |  |
|----------------------|--|
| Product Name         | Anti-CTLA-8 / IL-17a Reference Antibody (netakimab)  |
| Reactive Species     | Cynomolgus monkey, Human   |
| Description          | Boster Bio Anti-CTLA-8 / IL-17a Reference Antibody (netakimab) (Catalog # M00421-9). Tested in Flow Cytometry, ELISA, FTA. This antibody reacts with Cynomolgus monkey, Human. Endotoxin: < 0.381EU/ug,determined by LAL method. Expression system: CHO Cell |
| Application          | ELISA, Flow Cytometry, Functional Assay, Kinetics  |
| Clonality            | Monoclonal   |
| Formulation          | Purified monoclonal antibody supplied in PBS, pH6.0, without preservative.This antibody is purified through a protein A column.  |
| Storage Instructions | Maintain refrigerated at 2-8°C for up to 2 weeks. For long-term storage, aliquot and store at -20°C to avoid repeated freeze-thaw cycles.  |
| Uniprot ID           | Q16552   |

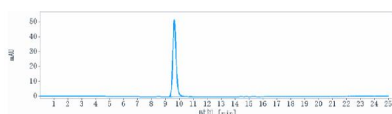
### Technical Details

|               |        |
|---------------|--------|
| Isotype       | IgG1   |
| Form          | Liquid |
| Concentration | 1mg/ml |

## Anti-CTLA-8 / IL-17a Reference Antibody (netakimab) (M00421-9) Images



Anti-CTLA-8/IL-17a Reference Antibody (netakimab) on SDS-PAGE under reducing (R) condition. The gel was stained with Coomassie Blue. The purity of the protein is greater than 90%



The purity of Anti-CTLA-8/IL-17a Reference Antibody (netakimab) is more than 95%

## Submit a product review to Biocompare.com

Submit a review of this product to Biocompare.com to receive a \$20 Amazon.com giftcard! Your reviews help your fellow scientists make the right decisions. Thank you for your contribution.



Anti-CTLA-8 / IL-17a Reference Antibody (netakimab)