

Anti-TOP1/Topoisomerase I Rabbit Monoclonal Antibody

Catalog Number: M00434

About TOP1

C3 plays a central role in the activation of the complement system. Its processing by C3 convertase is the central reaction in both classical and alternative complement pathways. After activation C3b can bind covalently, via its reactive thioester, to cell surface carbohydrates or immune aggregates.

Overview

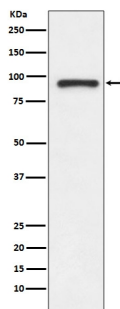
Product Name	Anti-TOP1/Topoisomerase I Rabbit Monoclonal Antibody
Reactive Species	Human, Mouse
Description	Boster Bio Anti-TOP1/Topoisomerase I Rabbit Monoclonal Antibody catalog # M00434. Tested in WB, IHC, ICC/IF, Flow Cytometry applications. This antibody reacts with Human, Mouse.
Application	Flow Cytometry, IF, IHC, ICC, WB
Clonality	Monoclonal FIG-20
Formulation	Rabbit IgG in phosphate buffered saline, pH 7.4, 150mM NaCl, 0.02% sodium azide and 50% glycerol, 0.4-0.5mg/ml BSA.
Storage Instructions	Store at -20°C for one year. For short term storage and frequent use, store at 4°C for up to one month. Avoid repeated freeze-thaw cycles.
Host	Rabbit
Uniprot ID	P11387

Technical Details

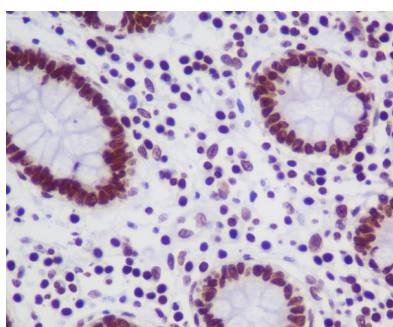
Immunogen	A synthesized peptide derived from human TOP1
Isotype	Rabbit IgG
Form	Liquid
Concentration	Actual concentration vary by lot. Use suggested dilution ratio to decide dilution procedure.
Purification	Affinity-chromatography
Suggested Dilutions	Dilute the sample so that the expected range of concentrations fall within the detection range of this kit. If the expected range of concentration is unknown, a pilot test should be conducted to decide the optimal dilution ratio for your samples. Some PubMed article(s) citing the expression level of this target are as follows: Boster Bio's internal QC testing used:

	WB 1:1000-1:2000 IHC 1:50-1:200 ICC/IF 1:50-1:200 FC 1:50
--	--------------------------------------------------------------------

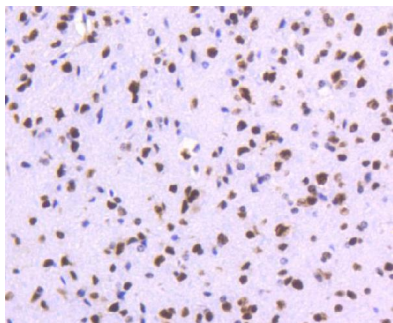
Anti-TOP1/Topoisomerase I Rabbit Monoclonal Antibody (M00434) Images



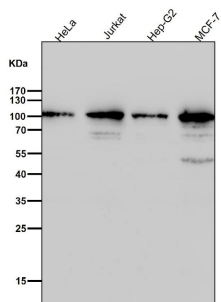
Western blot analysis of TOP1 expression in Jurkat cell lysate.



Immunohistochemical analysis of paraffin-embedded human colon, using TOP1 Antibody.



Immunohistochemical analysis of paraffin-embedded mouse brain tissue using anti-Topoisomerase I antibody. The section was pre-treated using heat mediated antigen retrieval with Tris-EDTA buffer (pH 8.0-8.4) for 20 minutes. The tissues were blocked in 5% BSA for 30 minutes at room temperature, washed with ddH₂O and PBS, and then probed with the primary antibody (1/50) for 30 minutes at room temperature. The detection was performed using an HRP conjugated compact polymer system. DAB was used as the chromogen. Tissues were counterstained with hematoxylin and mounted with DPX.



All lanes use the Antibody at 1:3W dilution for 1 hour at room temperature.

Submit a product review to Biocompare.com

Submit a review of this product to Biocompare.com to receive a \$20 Amazon.com giftcard! Your reviews help your fellow scientists make the right decisions. Thank you for your contribution.



Anti-TOP1/Topoisomerase I Rabbit Monoclonal Antibody