

Anti-Lamin A/C LMNA Monoclonal Antibody

Catalog Number: M00438-1

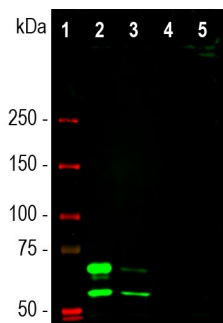
Overview

Product Name	Anti-Lamin A/C LMNA Monoclonal Antibody
Reactive Species	Human
Description	Boster Bio Anti-Lamin A/C LMNA Monoclonal Antibody catalog # M00438-1. Tested in IF, WB applications. This antibody reacts with Human.
Application	IF, WB
Clonality	Monoclonal
Formulation	Purified antibody at 1mg/mL in 50% PBS, 50% glycerol plus 5mM NaN ₃
Storage Instructions	Store at -20°C for one year. For short term storage and frequent use, store at 4°C for up to one month. Avoid repeated freeze-thaw cycles.
Host	Mouse
Uniprot ID	P02545

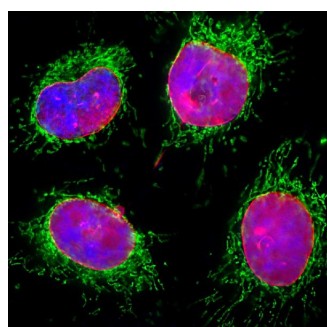
Technical Details

Immunogen	Full length recombinant human lamin A expressed in and purified from E. coli.
Concentration	0.5-1mg/ml, actual concentration vary by lot. Use suggested dilution ratio to decide dilution procedure.
Suggested Dilutions	<p>Dilute the sample so that the expected range of concentrations fall within the detection range of this kit.</p> <p>If the expected range of concentration is unknown, a pilot test should be conducted to decide the optimal dilution ratio for your samples.</p> <p>Some PubMed article(s) citing the expression level of this target are as follows:</p> <p>Boster Bio's internal QC testing used:</p> <p>WB: 1:1,000-1:2,000. IF/ICC 1:1,000</p>

Anti-Lamin A/C LMNA Monoclonal Antibody (M00438-1) Images



Western blot analysis of different cell lysates using mouse mAb to lamin A/C, M00438-1, dilution 1:1,000 in green: [1] protein standard (red), [2] HeLa, [3] HEK293 [4] C6, and [5] NIH-3T3 cell lysates. Two strong bands at 74 and 65kDa correspond to the lamin A and lamin C proteins respectively, detected only in the cells of human origin. M00438-1 antibody failed to recognize rat or mouse proteins.



Immunofluorescent analysis of HeLa cells stained with mouse mAb to lamin A/C, M00438-1, dilution 1:2,000 in red, and costained with rabbit pAb to HSP60, dilution 1:5,000, in green. The blue is Hoechst staining of nuclear DNA. M00438-1 antibody specifically labels the nuclear lamina, while the other antibody reveals protein expressed in mitochondria.

Submit a product review to Biocompare.com

Submit a review of this product to Biocompare.com to receive a \$20 Amazon.com giftcard! Your reviews help your fellow scientists make the right decisions. Thank you for your contribution.



Anti-Lamin A/C LMNA Monoclonal Antibody