

Anti-Lamin A/C LMNA Antibody

Catalog Number: M00438-2

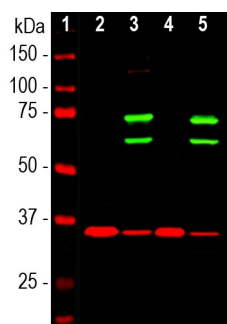
Overview

Product Name	Anti-Lamin A/C LMNA Antibody
Reactive Species	Human, Mouse, Rat
Description	Boster Bio Anti-Lamin A/C LMNA Antibody catalog # M00438-2. Tested in IF, WB applications. This antibody reacts with Human, Mouse, Rat.
Application	IF, WB
Clonality	Polyclonal
Formulation	Supplied as an aliquot of concentrated IgY preparation plus 5mM NaN ₃
Storage Instructions	Stable at 4°C for one year.
Host	Chicken
Uniprot ID	P02545

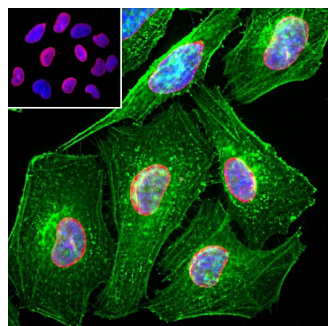
Technical Details

Immunogen	Full length recombinant human lamin A protein expressed in and purified from E. coli.
Concentration	0.5-1mg/ml, actual concentration vary by lot. Use suggested dilution ratio to decide dilution procedure.
Suggested Dilutions	<p>Dilute the sample so that the expected range of concentrations fall within the detection range of this kit.</p> <p>If the expected range of concentration is unknown, a pilot test should be conducted to decide the optimal dilution ratio for your samples.</p> <p>Some PubMed article(s) citing the expression level of this target are as follows:</p> <p>Boster Bio's internal QC testing used:</p> <p>WB: 1:2,000. IF/ICC 1:1,000</p>

Anti-Lamin A/C LMNA Antibody (M00438-2) Images



Western blot analysis of cytosolic or nuclear enriched fractions of cell lines probed with chicken pAb to lamin A/C, M00438-2, dilution 1:1,000 in green: [1] protein standard (red), [2] HeLa cytosol, [3] HeLa nuclear, [4] NIH-3T3 cytosol, and [5] NIH-3T3 nuclear fractions. Two strong bands at 74 and 65kDa correspond to lamin A and lamin C proteins respectively, detected exclusively in the nuclear fractions. The same blot was simultaneously probed with mouse mAb to GAPDH, in red. The single band at 37kDa represents GAPDH protein which is expressed predominantly in the cytosolic fractions.



Immunofluorescent analysis of HeLa cells stained with chicken pAb to lamin A/C, M00438-2, dilution 1:2,000 in red, and costained with mouse mAb to actin, dilution 1:500, in green. The blue is Hoechst staining of nuclear DNA. The M00438-2 antibody specifically labels the nuclear lamina, while the actin antibody stains the submembranous actin-rich cytoskeleton, stress fibers and bundles of actin associated with cell adhesion sites.

Submit a product review to Biocompare.com

Submit a review of this product to Biocompare.com to receive a \$20 Amazon.com giftcard! Your reviews help your fellow scientists make the right decisions. Thank you for your contribution.



Anti-Lamin A/C LMNA Antibody