

## Anti-Beta-2 Microglobulin (Renal Failure & Tumor Marker) B2M Monoclonal Antibody

Catalog Number: M00456

### About B2M

Recognizes a protein of 12kDa, identified as beta-2 microglobulin. Major histocompatibility complex (MHC) class 1 molecules bind to antigens for presentation on the surface of cells. The proteasome is responsible for producing these antigens from the components of foreign pathogens. MHC class 1 molecules consist of an alpha heavy chain that contains three subdomains (alpha1, alpha2, alpha3) and a non-covalent associating light chain, known as beta-2-Microglobulin. Beta-2-Microglobulin associates with the alpha3 subdomain of the alpha heavy chain and forms an immunoglobulin domain-like structure that mediates proper folding and expression of MHC class 1 molecules. The alpha1 and alpha2 domains of the alpha heavy chain form the peptide antigen-binding cleft. Mutations in the beta-2-Microglobulin gene can enhance the progression of malignant melanoma phenotypes.

### Overview

Product Name	Anti-Beta-2 Microglobulin (Renal Failure & Tumor Marker) B2M Monoclonal Antibody
Reactive Species	Human, Primate
Description	Boster Bio Anti-Beta-2 Microglobulin (Renal Failure & Tumor Marker) B2M Monoclonal Antibody (Catalog # M00456). Tested in Flow Cytometry, IF, WB, IHC applications. This antibody reacts with Human, Primate.
Conjugate	Biotin
Application	Flow Cytometry, IF, IHC, WB
Clonality	Monoclonal Clone: B2M/961
Formulation	Prepared in 10mM PBS with 0.05% BSA & 0.05% azide. Also available WITHOUT BSA & azide at 1.0mg/ml.
Storage Instructions	Antibody with azide - store at 2 to 8 °C. Antibody without azide - store at -20 to -80 °C. Antibody is stable for 24 months. Non-hazardous. No MSDS required.
Host	Mouse
Uniprot ID	P61769

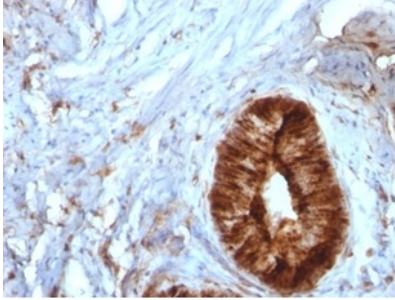
### Technical Details

Immunogen	Full length recombinant human B2M protein
Predicted Reactive Species	Bovine, Canine, Mouse, Orangutan, Pig, Rabbit, Rat, Deer
Isotype	IgG2b, kappa

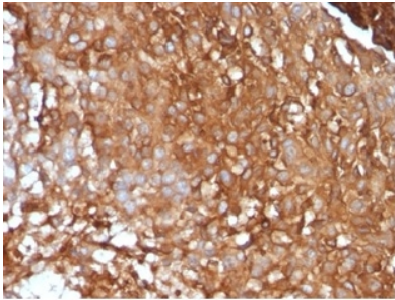
Form	Liquid
Concentration	Purified antibody with BSA and azide at 200ug/ml
Purification	200ug/ml of antibody purified from Bioreactor Concentrate by Protein A/G.
Suggested Dilutions	<p>Dilute the sample so that the expected range of concentrations fall within the detection range of this kit.</p> <p>If the expected range of concentration is unknown, a pilot test should be conducted to decide the optimal dilution ratio for your samples.</p> <p>Some PubMed article(s) citing the expression level of this target are as follows:</p> <p>Boster Bio's internal QC testing used:</p> <p>Flow Cytometry (0.5-1ug/million cells)</p> <p>Immunofluorescence (1-4ug/ml)</p> <p>Western Blot (0.5-2ug/ml)</p> <p>Immunohistochemistry (Formalin-fixed) (0.5-1ug/ml for 30 minutes at RT) (Staining of formalin-fixed tissues requires heating tissue sections in 10mM Tris with 1mM EDTA, pH 9.0, for 45 min at 95 °C followed by cooling at RT for 20 minutes)</p> <p>Optimal dilution for a specific application should be determined.</p>

## Anti-Beta-2 Microglobulin (Renal Failure & Tumor Marker) B2M Monoclonal Antibody (M00456) Images

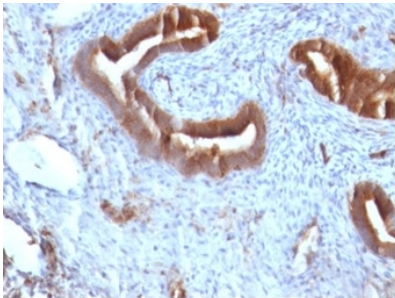
---



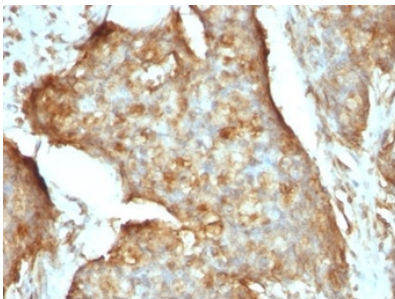
Formalin-fixed, paraffin-embedded human cervical carcinoma stained with Anti-Beta-2-Microglobulin Mouse Monoclonal Antibody (B2M/961).



Formalin-fixed, paraffin-embedded human melanoma stained with Anti-Beta-2-Microglobulin Mouse Monoclonal Antibody (B2M/961).

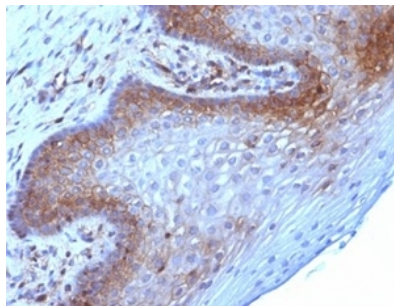
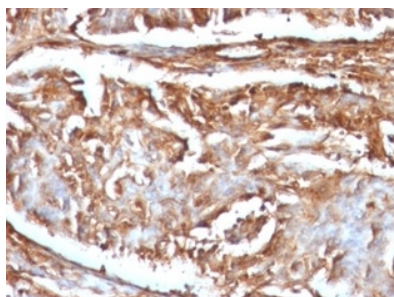


Formalin-fixed, paraffin-embedded human endometrial carcinoma stained with Anti-Beta-2-Microglobulin Mouse Monoclonal Antibody (B2M/961).

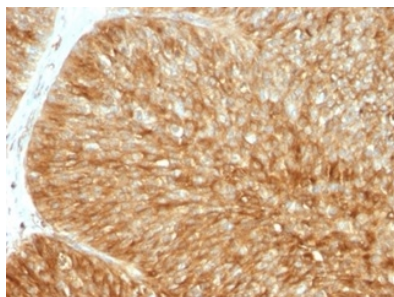


Formalin-fixed, paraffin-embedded human gastric carcinoma stained with Anti-Beta-2-Microglobulin Mouse Monoclonal Antibody (B2M/961).

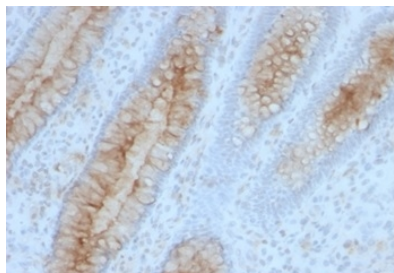
Formalin-fixed, paraffin-embedded human renal cell carcinoma stained with Anti-Beta-2-Microglobulin Mouse Monoclonal Antibody (B2M/961).



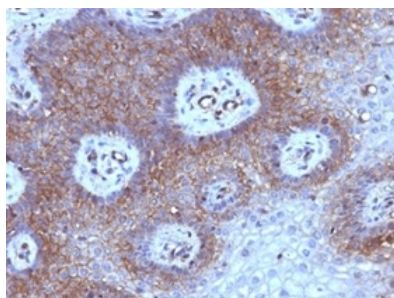
Formalin-fixed, paraffin-embedded human cervical carcinoma stained with Anti-Beta-2-Microglobulin Mouse Monoclonal Antibody (B2M/961).



Formalin-fixed, paraffin-embedded human bladder carcinoma stained with Anti-Beta-2-Microglobulin Mouse Monoclonal Antibody (B2M/961).

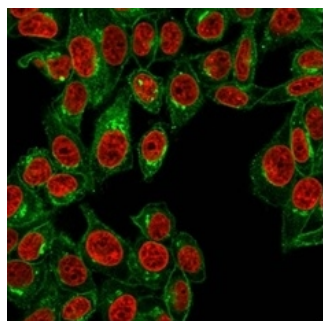
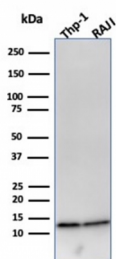


Formalin-fixed, paraffin-embedded human colon carcinoma stained with Anti-Beta-2-Microglobulin Mouse Monoclonal Antibody (B2M/961).

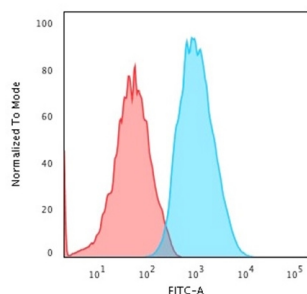


Formalin-fixed, paraffin-embedded human cervical carcinoma stained with Anti-Beta-2-Microglobulin Mouse Monoclonal Antibody (B2M/961).

Western Blot analysis of THP-1 and Raji cell lysates using Anti-Beta-2-Microglobulin Mouse Monoclonal Antibody (B2M/961).



Immunofluorescence analysis of HeLa cells labeling with Anti-Beta-2-Microglobulin Mouse Monoclonal Antibody (B2M/961) followed by goat anti-mouse IgG-CF488 (green). Nuclei stained with RedDot (red).



Flow Cytometric analysis of human HeLa cells. Anti-Beta-2-Microglobulin Mouse Monoclonal Antibody (B2M/961) followed by goat anti-mouse IgG-CF488 (blue); isotype control (red).

**Submit a product review to Biocompare.com**

Submit a review of this product to Biocompare.com to receive a \$20 Amazon.com giftcard! Your reviews help your fellow scientists make the right decisions. Thank you for your contribution.



**Anti-Beta-2 Microglobulin (Renal Failure & Tumor Marker) B2M Monoclonal Antibody**