

## Anti-LSD1/AOF2 KDM1A Antibody (Monoclonal, 1B2F2)

Catalog Number: M00532

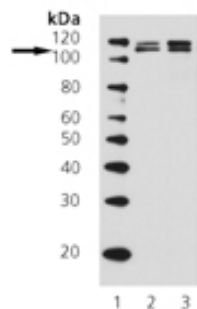
### Overview

Product Name	Anti-LSD1/AOF2 KDM1A Antibody (Monoclonal, 1B2F2)
Reactive Species	Human, Mouse, Rat
Description	Boster Bio Anti-LSD1/AOF2 KDM1A Antibody (Monoclonal, 1B2F2) catalog # M00532. Tested in WB applications. This antibody reacts with Human, Mouse, Rat.
Application	WB
Clonality	Monoclonal 1B2F2
Formulation	Each vial contains 50% glycerol and 0.09% sodium azide.
Storage Instructions	Store vial at -20°C prior to opening. Aliquot contents and freeze at -20°C or below for extended storage. Avoid cycles of freezing and thawing. Centrifuge product if not completely clear after standing at room temperature. This product is stable for several weeks at 4°C as an undiluted liquid. Dilute only prior to immediate use. Expiration date is one (1) year from date of opening.
Host	Mouse
Uniprot ID	O60341

### Technical Details

Immunogen	Recombinant human LSD1 truncated protein.
Predicted Reactive Species	Canine
Isotype	IgG2b
Form	Liquid
Concentration	0.5-1mg/ml, actual concentration vary by lot. Use suggested dilution ratio to decide dilution procedure.
Purification	Protein G affinity purified.
Suggested Dilutions	Dilute the sample so that the expected range of concentrations fall within the detection range of this kit. If the expected range of concentration is unknown, a pilot test should be conducted to decide the optimal dilution ratio for your samples. Some PubMed article(s) citing the expression level of this target are as follows:

## Anti-LSD1/AOF2 KDM1A Antibody (Monoclonal, 1B2F2) (M00532) Images



Western blot analysis of LSD1/AOF2 expression in MW Marker (lane 1), HELA whole cell lysates (lane 2) and NIH3T3 whole cell lysates (lane 3). LSD1/AOF2 was detected using mouse anti-LSD1/AOF2 Antigen Affinity purified monoclonal antibody (Catalog # M00532). The blot was developed using chemiluminescence (ECL) method (Catalog # EK1001).

### Submit a product review to Biocompare.com

Submit a review of this product to Biocompare.com to receive a \$20 Amazon.com giftcard! Your reviews help your fellow scientists make the right decisions. Thank you for your contribution.



Anti-LSD1/AOF2 KDM1A Antibody (Monoclonal, 1B2F2)