

Anti-HLA-DRB (MHC II) HLA-DRB1 Monoclonal Antibody

Catalog Number: M00568

About HLA-DRB1

This monoclonal antibody reacts with a 28kDa chain of HLA-DRB1 antigen, a member of MHC class II molecules. It does not cross react with HLA-DP and HLA-DQ. The L243 antibody recognizes a different epitope than the LN3 monoclonal antibody, and these antibodies do not cross-block binding to each other's respective epitopes. HLA-DR is a heterodimeric cell surface glycoprotein comprised of a 36kDa alpha (heavy) chain and a 28kDa beta (light) chain. It is expressed on B-cells, activated T-cells, monocytes/macrophages, dendritic cells and other non-professional APCs. In conjunction with the CD3/TCR complex and CD4 molecules, HLA-DR is critical for efficient peptide presentation to CD4+ T cells. It is an excellent histiocytic marker in paraffin sections producing intense staining. True histiocytic neoplasms are similarly positive. HLA-DR antigens also occur on a variety of epithelial cells and their corresponding neoplastic counterparts. Loss of HLA-DR expression is related to tumor microenvironment and predicts adverse outcome in diffuse large B-cell lymphoma.

Overview

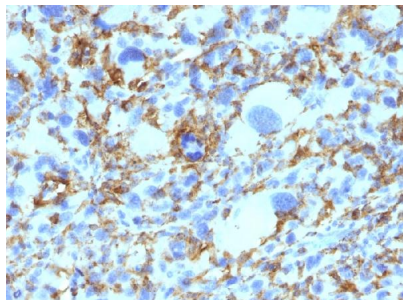
Product Name	Anti-HLA-DRB (MHC II) HLA-DRB1 Monoclonal Antibody
Reactive Species	Human, Monkey
Description	Boster Bio Anti-HLA-DRB (MHC II) HLA-DRB1 Monoclonal Antibody (Catalog # M00568). Tested in Flow Cytometry, IF, WB, IHC applications. This antibody reacts with Human, Monkey.
Conjugate	Biotin
Application	Flow Cytometry, IF, IHC, WB
Clonality	Monoclonal Clone: SPM423
Formulation	Prepared in 10mM PBS with 0.05% BSA & 0.05% azide. Also available WITHOUT BSA & azide at 1.0mg/ml.
Storage Instructions	Antibody with azide - store at 2 to 8°C. Antibody without azide - store at -20 to -80°C. Antibody is stable for 24 months. Non-hazardous. No MSDS required.
Host	Mouse
Uniprot ID	P01911

Technical Details

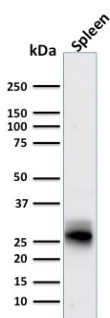
Immunogen	Activated human peripheral blood mononuclear cells
Predicted Reactive Species	Bovine, Canine, Mouse, Orangutan, Pig, Rabbit, Rat, Deer
Cross Reactivity	Does not cross-react with primate, avian or amphibian GR.
Isotype	IgG2b, kappa

Form	Liquid
Concentration	Purified antibody with BSA and azide at 200ug/ml
Purification	200ug/ml of antibody purified from Bioreactor Concentrate by Protein A/G.
Suggested Dilutions	<p>Dilute the sample so that the expected range of concentrations fall within the detection range of this kit.</p> <p>If the expected range of concentration is unknown, a pilot test should be conducted to decide the optimal dilution ratio for your samples.</p> <p>Some PubMed article(s) citing the expression level of this target are as follows:</p> <p>Boster Bio's internal QC testing used:</p> <p>Flow Cytometry (1-2ug/million cells)</p> <p>Immunofluorescence (1-2ug/ml)</p> <p>Western Blot (1-2ug/ml)</p> <p>Immunohistochemistry (Formalin-fixed) (0.25-0.5ug/ml for 30 minutes at RT)(Staining of formalin-fixed tissues requires heating tissue sections in 10mM Tris with 1mM EDTA, pH 9.0, for 45 min at 95&degC followed by cooling at RT for 20 minutes)</p> <p>Optimal dilution for a specific application should be determined.</p>

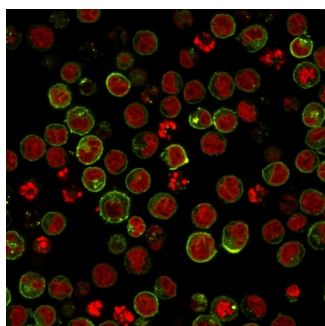
Anti-HLA-DRB (MHC II) HLA-DRB1 Monoclonal Antibody (M00568) Images



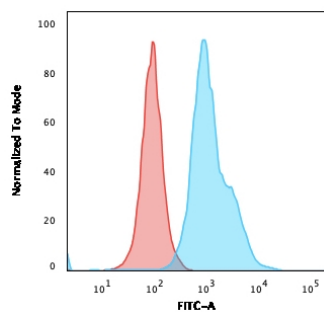
Formalin-fixed, paraffin-embedded human Histiocytoma stained with Anti-HLA-DR Monoclonal Antibody (SPM423).



Western Blot analysis of human Spleen tissue lysate using Anti-HLA-DR Monoclonal Antibody (SPM423).



Immunofluorescence analysis of Raji cells labeling HLA-DR with HLA-DR Monoclonal Antibody (SPM423) conjugated with CF594 (Green). The nuclear counterstain is Reddot (Red)



Flow Cytometric analysis of human Raji cells using HLA-DR MAb (SPM423) followed by Goat anti-Mouse IgG-CF488 (Blue); Isotype Control (Red).

Submit a product review to Biocompare.com

Submit a review of this product to Biocompare.com to receive a \$20 Amazon.com giftcard! Your reviews help your fellow scientists make the right decisions. Thank you for your contribution.



Anti-HLA-DRB (MHC II) HLA-DRB1 Monoclonal Antibody