

Anti-GSTM1 Antibody Picoband™ (monoclonal, 11F2)

Catalog Number: M00569

About GSTM1

Glutathione S-transferase Mu 1 (gene name GSTM1) is a human glutathione S-transferase. Cytosolic and membrane-bound forms of glutathione S-transferase are encoded by two distinct supergene families. At present, eight distinct classes of the soluble cytoplasmic mammalian glutathione S-transferases have been identified: alpha, kappa, mu, omega, pi, sigma, theta and zeta. This gene encodes a glutathione S-transferase that belongs to the mu class. The mu class of enzymes functions in the detoxification of electrophilic compounds, including carcinogens, therapeutic drugs, environmental toxins and products of oxidative stress, by conjugation with glutathione. The genes encoding the mu class of enzymes are organized in a gene cluster on chromosome 1p13.3 and are known to be highly polymorphic. These genetic variations can change an individual's susceptibility to carcinogens and toxins as well as affect the toxicity and efficacy of certain drugs. Null mutations of this class mu gene have been linked with an increase in a number of cancers, likely due to an increased susceptibility to environmental toxins and carcinogens. Multiple protein isoforms are encoded by transcript variants of this gene.

Overview

Product Name	Anti-GSTM1 Antibody Picoband™ (monoclonal, 11F2)
Reactive Species	Human, Mouse, Rat
Description	Boster Bio Anti-GSTM1 Antibody Picoband™ (monoclonal, 11F2) catalog # M00569. Tested in Flow Cytometry, IHC, ICC, WB applications. This antibody reacts with Human, Mouse, Rat.
Application	Flow Cytometry, IHC, ICC, WB
Clonality	Monoclonal 11F2
Formulation	Each vial contains 4mg Trehalose, 0.9mg NaCl, 0.2mg Na2HPO4, 0.05mg NaN3.
Storage Instructions	Store at -20°C for one year from date of receipt. After reconstitution, at 4°C for one month. It can also be aliquotted and stored frozen at -20°C for six months. Avoid repeated freeze-thaw cycles.
Host	Mouse
Uniprot ID	P09488

Technical Details

Immunogen	A synthetic peptide corresponding to a sequence in the middle region of human GSTM1, which shares 70.6% and 73.5% amino acid (aa) sequence identity with mouse and rat GSTM1, respectively.
Predicted Reactive Species	Hepatitis Virus
Recommended Detection Systems	Boster recommends Enhanced Chemiluminescent Kit with anti-Mouse IgG (EK1001) for Western blot, and HRP Conjugated anti-Mouse IgG Super Vision Assay Kit (SV0001-1) for IHC(P), IHC(F) and ICC.
Cross Reactivity	No cross-reactivity with other proteins.

Isotype	Mouse IgG1
Form	Lyophilized
Concentration	Adding 0.2 ml of distilled water will yield a concentration of 500 ug/ml.
Suggested Dilutions	<p>Dilute the sample so that the expected range of concentrations fall within the detection range of this kit.</p> <p>If the expected range of concentration is unknown, a pilot test should be conducted to decide the optimal dilution ratio for your samples.</p> <p>Some PubMed article(s) citing the expression level of this target are as follows:</p> <p>Boster Bio's internal QC testing used:</p> <p>Western blot, 0.1-0.5ug/ml</p> <p>Immunohistochemistry (Paraffin-embedded Section), 0.5-1ug/ml</p> <p>Immunohistochemistry (Frozen Section), 0.5-1ug/ml</p> <p>Immunocytochemistry, 0.5-1ug/ml</p> <p>Flow Cytometry, 1-3ug/1x10⁶ cells</p>

Anti-GSTM1 Antibody Picoband™ (monoclonal, 11F2) (M00569) Images

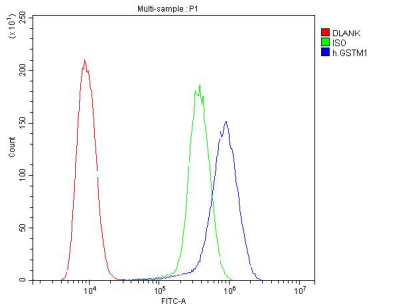


Figure 1. Flow Cytometry analysis of U2OS cells using anti-GSTM1 antibody (M00569).
Overlay histogram showing U2OS cells stained with M00569 (Blue line). The cells were blocked with 10% normal goat serum. And then incubated with mouse anti-GSTM1 Antibody (M00569, 1ug/1x10⁶ cells) for 30 min at 20°C. DyLight®488 conjugated goat anti-mouse IgG (BA1126, 5-10ug/1x10⁶ cells) was used as secondary antibody for 30 minutes at 20°C. Isotype control antibody (Green line) was mouse IgG (1ug/1x10⁶) used under the same conditions. Unlabelled sample (Red line) was also used as a control.

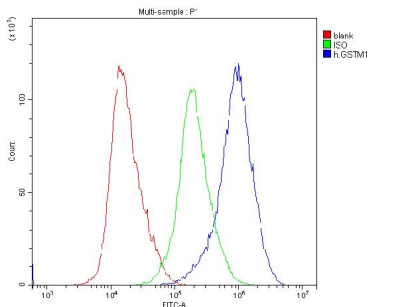


Figure 2. Flow Cytometry analysis of HELA cells using anti-GSTM1 antibody (M00569).
Overlay histogram showing HELA cells stained with M00569 (Blue line). The cells were blocked with 10% normal goat serum. And then incubated with mouse anti-GSTM1 Antibody (M00569, 1ug/1x10⁶ cells) for 30 min at 20°C. DyLight®488 conjugated goat anti-mouse IgG (BA1126, 5-10ug/1x10⁶ cells) was used as secondary antibody for 30 minutes at 20°C. Isotype control antibody (Green line) was mouse IgG (1ug/1x10⁶) used under the same conditions. Unlabelled sample (Red line) was also used as a control.

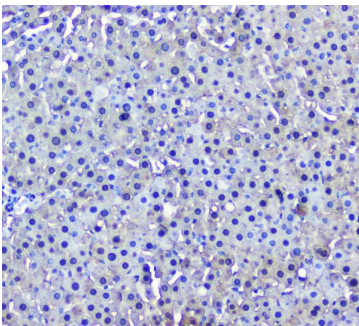


Figure 3. IHC analysis of GSTM1 using anti-GSTM1 antibody (M00569).
GSTM1 was detected in paraffin-embedded section of rat liver tissue. Heat mediated antigen retrieval was performed in citrate buffer (pH6, epitope retrieval solution) for 20 mins. The tissue section was blocked with 10% goat serum. The tissue section was then incubated with 2ug/ml mouse anti-GSTM1 Antibody (M00569) overnight at 4°C. Biotinylated goat anti-mouse IgG was used as secondary antibody and incubated for 30 minutes at 37°C. The tissue section was developed using Streptavidin-Biotin-Complex (SABC)(Catalog # SA1021) with DAB as the chromogen.

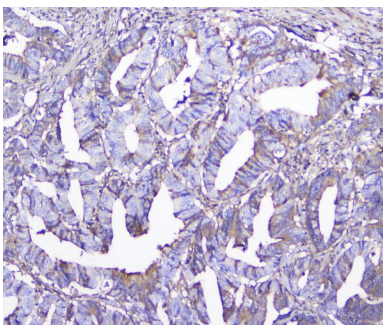


Figure 4. IHC analysis of GSTM1 using anti-GSTM1 antibody (M00569).
GSTM1 was detected in paraffin-embedded section of human colon cancer tissue. Heat mediated antigen retrieval was performed in citrate buffer (pH6, epitope retrieval solution) for 20 mins. The tissue section was blocked with 10% goat serum. The tissue section was then incubated with 2ug/ml mouse anti-GSTM1 Antibody (M00569) overnight at 4°C. Biotinylated goat anti-mouse IgG was used as secondary antibody and incubated for 30 minutes at 37°C. The tissue section was developed using Streptavidin-Biotin-Complex (SABC)(Catalog # SA1021) with DAB as the chromogen.

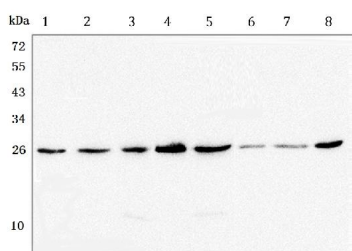


Figure 5. Western blot analysis of GSTM1 using anti-GSTM1 antibody (M00569).

Electrophoresis was performed on a 5-20% SDS-PAGE gel at 70V (Stacking gel) / 90V (Resolving gel) for 2-3 hours. The sample well of each lane was loaded with 50ug of sample under reducing conditions.

Lane 1: human Hela, whole cell lysate,
Lane 2: human T-47D whole cell lysate,
Lane 3: rat brain tissue lysate,
Lane 4: rat lung tissue lysate,
Lane 5: rat stomach tissue lysate,
Lane 6: mouse lung tissue lysate,
Lane 7: mouse stomach tissue lysate,
Lane 8: mouse kidney tissue lysate.

After Electrophoresis, proteins were transferred to a Nitrocellulose membrane at 150mA for 50-90 minutes. Blocked the membrane with 5% Non-fat Milk/ TBS for 1.5 hour at RT. The membrane was incubated with mouse anti-GSTM1 antigen affinity purified monoclonal antibody (Catalog # M00569) at 0.5 ug/mL overnight at 4°C, then washed with TBS-0.1%Tween 3 times with 5 minutes each and probed with a goat anti-mouse IgG-HRP secondary antibody at a dilution of 1:10000 for 1.5 hour at RT. The signal is developed using an Enhanced Chemiluminescent detection (ECL) kit (Catalog # EK1001) with Tanon 5200 system. A specific band was detected for GSTM1 at approximately 26KD. The expected band size for GSTM1 is at 26KD.

Submit a product review to Biocompare.com

Submit a review of this product to Biocompare.com to receive a \$20 Amazon.com giftcard! Your reviews help your fellow scientists make the right decisions. Thank you for your contribution.



Anti-GSTM1 Antibody (monoclonal, 11F2)