

Anti-CREB CREB1 Rabbit Monoclonal Antibody

Catalog Number: M00577

About CREB1

Dynamin-related GTPase required for mitochondrial fusion and regulation of apoptosis. May form a diffusion barrier for proteins stored in mitochondrial cristae. Proteolytic processing in response to intrinsic apoptotic signals may lead to disassembly of OPA1 oligomers and release of the caspase activator cytochrome C (CYCS) into the mitochondrial intermembrane space.

Overview

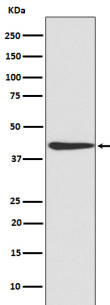
Product Name	Anti-CREB CREB1 Rabbit Monoclonal Antibody
Reactive Species	Human, Mouse, Rat
Description	Boster Bio Anti-CREB CREB1 Rabbit Monoclonal Antibody catalog # M00577. Tested in WB, IHC, ICC/IF, IP, Flow Cytometry applications. This antibody reacts with Human, Mouse, Rat.
Application	Flow Cytometry, IP, IF, IHC, ICC, WB
Clonality	Monoclonal DCO-3
Formulation	Rabbit IgG in phosphate buffered saline, pH 7.4, 150mM NaCl, 0.02% sodium azide and 50% glycerol, 0.4-0.5mg/ml BSA.
Storage Instructions	Store at -20°C for one year. For short term storage and frequent use, store at 4°C for up to one month. Avoid repeated freeze-thaw cycles.
Host	Rabbit
Uniprot ID	P16220

Technical Details

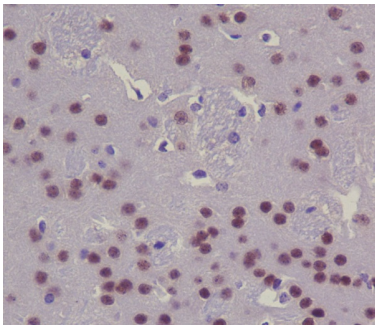
Immunogen	A synthesized peptide derived from human CREB
Isotype	Rabbit IgG
Form	Liquid
Concentration	Actual concentration vary by lot. Use suggested dilution ratio to decide dilution procedure.
Purification	Affinity-chromatography
Suggested Dilutions	Dilute the sample so that the expected range of concentrations fall within the detection range of this kit. If the expected range of concentration is unknown, a pilot test should be conducted to decide the optimal dilution ratio for your samples. Some PubMed article(s) citing the expression level of this target are as follows: Boster Bio's internal QC testing used:

	WB 1:500-1:2000 IHC 1:50-1:200 ICC/IF 1:50-1:200 IP 1:50 FC 1:50
--	--

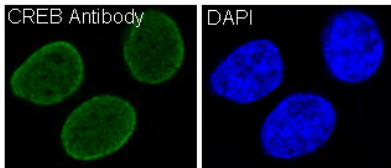
Anti-CREB CREB1 Rabbit Monoclonal Antibody (M00577) Images



Western blot analysis of CREB expression in NIH/3T3 cell lysate.



Immunohistochemical analysis of paraffin-embedded mouse brain, using CREB Antibody.



Immunofluorescent analysis of HeLa cells, using CREB Antibody .

2 Publications Citing This Product

1. PubMed ID: 33242618, Lin S, Li Q, Jiang S, Xu Z, Jiang Y, Liu L, Jiang J, Tong Y, Wang P. Crocetin ameliorates chronic restraint stress-induced depression-like behaviors in mice by regulating MEK/ERK pathways and gut microbiota. J Ethnopharmacol. 2020 Nov 23;113608. doi:10.1016/j.jep.20

2. PubMed ID: 24289115, LncRNA DQ786243 affects Treg related CREB and Foxp3 expression in Crohn's disease

Visit [bosterbio.com/anti-creb-rabbit-monoclonal-antibody-m00577-boster.html](https://www.bosterbio.com/anti-creb-rabbit-monoclonal-antibody-m00577-boster.html) to see all 2 publications.

Submit a product review to Biocompare.com

Submit a review of this product to Biocompare.com to receive a \$20 Amazon.com giftcard! Your reviews help your fellow scientists make the right decisions. Thank you for your contribution.



Anti-CREB CREB1 Rabbit Monoclonal Antibody