

Anti-Integrin beta 3 ITGB3 Rabbit Monoclonal Antibody

Catalog Number: M00587-1

About ITGB3

Dynamin-related GTPase required for mitochondrial fusion and regulation of apoptosis. May form a diffusion barrier for proteins stored in mitochondrial cristae. Proteolytic processing in response to intrinsic apoptotic signals may lead to disassembly of OPA1 oligomers and release of the caspase activator cytochrome C (CYCS) into the mitochondrial intermembrane space.

Overview

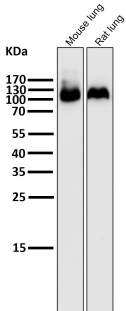
Product Name	Anti-Integrin beta 3 ITGB3 Rabbit Monoclonal Antibody
Reactive Species	Human, Mouse, Rat
Description	Boster Bio Anti-Integrin beta 3 ITGB3 Rabbit Monoclonal Antibody catalog # M00587-1. Tested in WB, IHC, ICC/IF applications. This antibody reacts with Human, Mouse, Rat.
Application	IF, IHC, ICC, WB
Clonality	Monoclonal BFE-9
Formulation	Rabbit IgG in phosphate buffered saline, pH 7.4, 150mM NaCl, 0.02% sodium azide and 50% glycerol, 0.4-0.5mg/ml BSA.
Storage Instructions	Store at -20°C for one year. For short term storage and frequent use, store at 4°C for up to one month. Avoid repeated freeze-thaw cycles.
Host	Rabbit
Uniprot ID	P05106

Technical Details

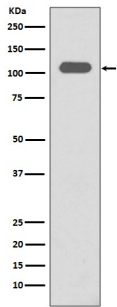
Immunogen	A synthesized peptide derived from human Integrin beta 3
Isotype	Rabbit IgG
Form	Liquid
Concentration	Actual concentration vary by lot. Use suggested dilution ratio to decide dilution procedure.
Purification	Affinity-chromatography
Suggested Dilutions	Dilute the sample so that the expected range of concentrations fall within the detection range of this kit. If the expected range of concentration is unknown, a pilot test should be conducted to decide the optimal dilution ratio for your samples. Some PubMed article(s) citing the expression level of this target are as follows: Boster Bio's internal QC testing used:

	WB 1:1000-1:2000 IHC 1:50-1:200 ICC/IF 1:50-1:200
--	---

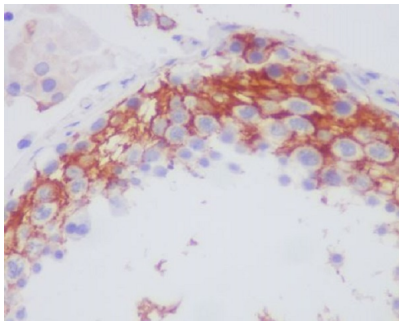
Anti-Integrin beta 3 ITGB3 Rabbit Monoclonal Antibody (M00587-1) Images



All lanes use the Antibody at 1:5K dilution for 1 hour at room temperature.



Western blot analysis of Integrin beta3 expression in human spleen lysate.



Immunohistochemical analysis of paraffin-embedded human testis, using Integrin beta 3 Antibody .

3 Publications Citing This Product

1. PubMed ID: 33536035, Zhou L,Li C,Liu X,Zhang T.Effect of Irisin on LIF and integrin alphavbeta3 in rats of implantation failure.Reprod Biol Endocrinol.2021 Feb 3;19(1):18.doi:10.1186/s12958-021-00700-9.PMID:33536035;PMCID:PMC7856750.
2. PubMed ID: 21747684, Study on the Expression and Clinical Significances of Lewis y Antigen and Integrin α v, β 3 in Epithelial Ovarian Tumors
3. PubMed ID: 18200665, Correlation of integrin α 2 β 3 mRNA and vascular endothelial growth factor protein expression profiles with the clinicopathological features and prognosis of α 2 β 3

Visit bosterbio.com/anti-integrin-beta-3-rabbit-monoclonal-antibody-m00587-1-boster.html to see all 3 publications.

Submit a product review to Biocompare.com

Submit a review of this product to Biocompare.com to receive a \$20 Amazon.com giftcard! Your



reviews help your fellow scientists make the right decisions. Thank you for your contribution.

Anti-Integrin beta 3 ITGB3 Rabbit Monoclonal Antibody