

## Anti-Clusterin (human) Monoclonal Antibody (CLI-9)

Catalog Number: M00590

### About CLU

Reacts with human integrin beta3 (GPIIIa, vitronectin receptor beta chain). It associates with the IIb-chain (CD41) to form the GpIIb/GpIIIa complex (CD41/CD61). The CD41/CD61 complex appears early in megakaryocyte maturation. The activated CD41/CD61 complex is a receptor for von Willebrand factor, soluble fibrinogen, fibronectin, vitronectin and thrombospondin. It plays a central role in platelet activation and aggregation. The CD51/CD61 is implicated in tumor metastasis and adenoviral infection. The antibody detects platelets in smears of blood and bone marrow, as well as megakaryocytes in frozen sections and cell smears. The antibody is useful for classification of megakaryoblastic leukemia.

### Overview

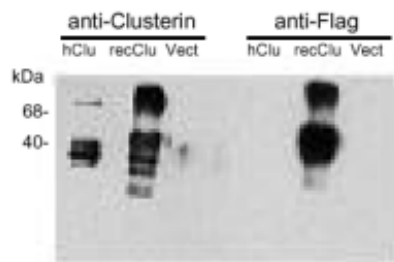
Product Name	Anti-Clusterin (human) Monoclonal Antibody (CLI-9)
Reactive Species	Human
Description	Boster Bio Anti-Clusterin (human) Monoclonal Antibody (CLI-9) (Catalog# M00590). Tested in ICC, IHC-F, IHC-P, IP, WB application(s). This antibody reacts with Human.
Conjugate	Biotin
Application	IP, IHC-P, IHC-F, ICC, WB
Clonality	Monoclonal CLI-9
Formulation	Liquid. In PBS containing 0.02% sodium azide.
Storage Instructions	Store at -20°C for one year. For short-term storage and frequent use, store at 4°C for up to one month. Avoid repeated freeze-thaw cycles.
Host	Mouse
Uniprot ID	P10909

### Technical Details

Immunogen	Purified human clusterin (TRPM-2)
Predicted Reactive Species	Bovine, Canine, Mouse, Orangutan, Pig, Rabbit, Rat, Deer
Cross Reactivity	Does not cross-react with primate, avian or amphibian GR.
Isotype	IgG1
Form	Liquid
Concentration	0.5-1mg/ml, actual concentration vary by lot. Use suggested dilution ratio to decide dilution procedure.

Purification	-
Suggested Dilutions	<p>Dilute the sample so that the expected range of concentrations fall within the detection range of this kit.</p> <p>If the expected range of concentration is unknown, a pilot test should be conducted to decide the optimal dilution ratio for your samples.</p> <p>Some PubMed article(s) citing the expression level of this target are as follows:</p> <p>Boster Bio's internal QC testing used: Western Blot (1:2,000)</p> <p>Suggested dilutions/conditions may not be available for all applications. Optimal conditions must be determined individually for each application.</p>

## Anti-Clusterin (human) Monoclonal Antibody (CLI-9) (M00590) Images



### Submit a product review to Biocompare.com

Submit a review of this product to Biocompare.com to receive a \$20 Amazon.com giftcard! Your reviews help your fellow scientists make the right decisions. Thank you for your contribution.



Anti-Clusterin (human) Monoclonal Antibody (CLI-9)