

## Anti-CD68/Sr D1 Rabbit Monoclonal Antibody

Catalog Number: M00602-1

### About CD68

Dynamin-related GTPase required for mitochondrial fusion and regulation of apoptosis. May form a diffusion barrier for proteins stored in mitochondrial cristae. Proteolytic processing in response to intrinsic apoptotic signals may lead to disassembly of OPA1 oligomers and release of the caspase activator cytochrome C (CYCS) into the mitochondrial intermembrane space.

### Overview

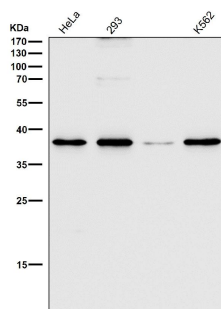
Product Name	Anti-CD68/Sr D1 Rabbit Monoclonal Antibody
Reactive Species	Human, Mouse, Rat
Description	Boster Bio Anti-CD68/Sr D1 Rabbit Monoclonal Antibody catalog # M00602-1. Tested in WB application. This antibody reacts with Human, Mouse, Rat.
Application	WB
Clonality	Monoclonal GBE-3
Formulation	Rabbit IgG in phosphate buffered saline, pH 7.4, 150mM NaCl, 0.02% sodium azide and 50% glycerol, 0.4-0.5mg/ml BSA.
Storage Instructions	Store at -20°C for one year. For short term storage and frequent use, store at 4°C for up to one month. Avoid repeated freeze-thaw cycles.
Host	Rabbit
Uniprot ID	P34810

### Technical Details

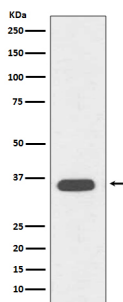
Immunogen	A synthesized peptide derived from human CD68
Isotype	Rabbit IgG
Form	Liquid
Concentration	Actual concentration vary by lot. Use suggested dilution ratio to decide dilution procedure.
Purification	Affinity-chromatography
Suggested Dilutions	Dilute the sample so that the expected range of concentrations fall within the detection range of this kit. If the expected range of concentration is unknown, a pilot test should be conducted to decide the optimal dilution ratio for your samples. Some PubMed article(s) citing the expression level of this target are as follows: Boster Bio's internal QC testing used:

	WB 1:500-1:1000
--	-----------------

## Anti-CD68/Sr D1 Rabbit Monoclonal Antibody (M00602-1) Images



All lanes use the Antibody at 1:2K dilution for 1 hour at room temperature.



Western blot analysis of CD68 expression in Jurkat cell lysate.

## 18 Publications Citing This Product

1. PubMed ID: -, Fan Guo, Wei na Kong, Gang Zhao et al. The Correlation Between Tumor-associated Macrophage Infiltration and Progression in Cervical Carcinoma, 01 December 2020, PREPRINT (Version 1) available at Research Square[+https://doi.org/10.21203/rs.3.rs-115339/v1+]
2. PubMed ID: 27554340, Blockage of Galectin-receptor Interactions by  $\beta$ -lactose Exacerbates Plasmodium berghei-induced Pulmonary Immunopathology
3. PubMed ID: 25906757, 1,25(OH)2D3 downregulates the Toll-like receptor 4-mediated inflammatory pathway and ameliorates liver injury in diabetic rats

Visit [bosterbio.com/anti-cd68-rabbit-monoclonal-antibody-m00602-1-boster.html](https://www.bosterbio.com/anti-cd68-rabbit-monoclonal-antibody-m00602-1-boster.html) to see all 18 publications.

## Submit a product review to Biocompare.com

Submit a review of this product to Biocompare.com to receive a \$20 Amazon.com giftcard! Your reviews help your fellow scientists make the right decisions. Thank you for your contribution.



Anti-CD68/Sr D1 Rabbit Monoclonal Antibody