

Anti-SGK1/Sgk Rabbit Monoclonal Antibody

Catalog Number: M00673

About SGK1

Dynamin-related GTPase required for mitochondrial fusion and regulation of apoptosis. May form a diffusion barrier for proteins stored in mitochondrial cristae. Proteolytic processing in response to intrinsic apoptotic signals may lead to disassembly of OPA1 oligomers and release of the caspase activator cytochrome C (CYCS) into the mitochondrial intermembrane space.

Overview

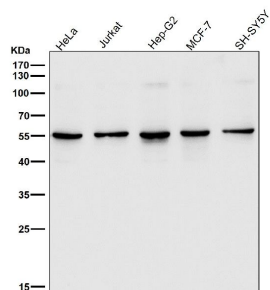
Product Name	Anti-SGK1/Sgk Rabbit Monoclonal Antibody
Reactive Species	Human, Mouse, Rat
Description	Boster Bio Anti-SGK1/Sgk Rabbit Monoclonal Antibody catalog # M00673. Tested in WB, IHC, IP, Flow Cytometry applications. This antibody reacts with Human, Mouse, Rat.
Application	Flow Cytometry, IP, IHC, WB
Clonality	Monoclonal EHF-19
Formulation	Rabbit IgG in phosphate buffered saline, pH 7.4, 150mM NaCl, 0.02% sodium azide and 50% glycerol, 0.4-0.5mg/ml BSA.
Storage Instructions	Store at -20°C for one year. For short term storage and frequent use, store at 4°C for up to one month. Avoid repeated freeze-thaw cycles.
Host	Rabbit
Uniprot ID	O00141

Technical Details

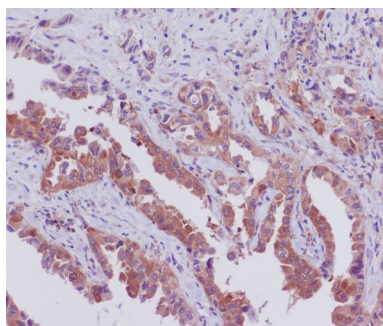
Immunogen	A synthesized peptide derived from human SGK1
Isotype	Rabbit IgG
Form	Liquid
Concentration	Actual concentration vary by lot. Use suggested dilution ratio to decide dilution procedure.
Purification	Affinity-chromatography
Suggested Dilutions	Dilute the sample so that the expected range of concentrations fall within the detection range of this kit. If the expected range of concentration is unknown, a pilot test should be conducted to decide the optimal dilution ratio for your samples. Some PubMed article(s) citing the expression level of this target are as follows: Boster Bio's internal QC testing used:

	WB 1:500-1:1000 IHC 1:50-1:200 IP 1:50 FC 1:30
--	---

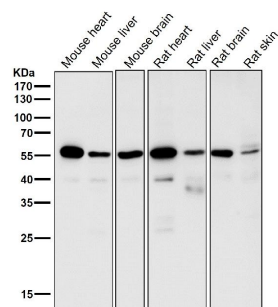
Anti-SGK1/Sgk Rabbit Monoclonal Antibody (M00673) Images



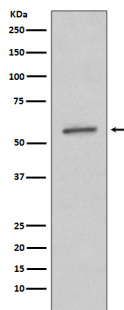
All lanes use the Antibody at 1:1K dilution for 1 hour at room temperature.



Immunohistochemical analysis of paraffin-embedded human lung cancer, using SGK1 Antibody.



All lanes use the Antibody at 1:1K dilution for 1 hour at room temperature.



Western blot analysis of SGK1 expression in A431 cell lysate.

1 Publications Citing This Product

1. PubMed ID: 29212953, Scortegagna M1, Berthon A2, Settas N2, Giannakou A2, Garcia G1, Li JL1, James B1, Liddington RC1, Vilches-Moure JG3, Stratakis CA2, Ronai ZA1,4. JCI Insight. 2017 Dec 7;2(23). pii: 97128. doi: 10.1172/jci.insight.97128. [Epub ahead of print] The E...

Visit bosterbio.com/anti-sgk1-rabbit-monoclonal-antibody-m00673-boster.html to see all 1 publications.

Submit a product review to Biocompare.com

Submit a review of this product to Biocompare.com to receive a \$20 Amazon.com giftcard! Your reviews help your fellow scientists make the right decisions. Thank you for your contribution.



Anti-SGK1/Sgk Rabbit Monoclonal Antibody