

Anti-Alpha-1-Antitrypsin (SERPINA1) (Hepatocellular & Histiocytic Marker) Monoclonal Antibody

Catalog Number: M00720

About SERPINA1

The immunohistochemical staining of AAT is useful in identification of benign and malignant hepatic tumors and yolk sac carcinomas. Positive staining for AAT is also used in detection of benign and malignant lesions of histiocytic nature. This antibody is may also useful tool in the screening of patients with cryptogenic cirrhosis or other forms of liver disease with fibrosis of uncertain origin.

Overview

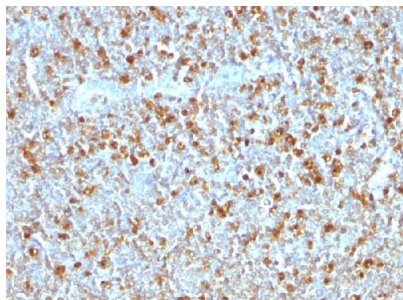
Product Name	Anti-Alpha-1-Antitrypsin (SERPINA1) (Hepatocellular & Histiocytic Marker) Monoclonal Antibody
Reactive Species	Human
Description	Boster Bio Anti-Alpha-1-Antitrypsin (SERPINA1) (Hepatocellular & Histiocytic Marker) Monoclonal Antibody (Catalog # M00720). Tested in WB, IHC applications. This antibody reacts with Human.
Conjugate	Biotin
Application	IHC, WB
Clonality	Monoclonal Clone: AAT/1379
Formulation	Prepared in 10mM PBS with 0.05% BSA & 0.05% azide. Also available WITHOUT BSA & azide at 1.0mg/ml.
Storage Instructions	Antibody with azide - store at 2 to 8°C. Antibody without azide - store at -20 to -80°C. Antibody is stable for 24 months. Non-hazardous. No MSDS required.
Host	Mouse
Uniprot ID	P01009

Technical Details

Immunogen	Recombinant human Alpha-1-Antitrypsin (AAT) protein fragment
Predicted Reactive Species	Bovine, Canine, Mouse, Orangutan, Pig, Rabbit, Rat, Deer
Cross Reactivity	Does not cross-react with primate, avian or amphibian GR.
Isotype	IgG1, kappa
Form	Liquid
Concentration	Purified antibody with BSA and azide at 200ug/ml

Purification	200ug/ml of antibody purified from Bioreactor Concentrate by Protein A/G.
Suggested Dilutions	<p>Dilute the sample so that the expected range of concentrations fall within the detection range of this kit.</p> <p>If the expected range of concentration is unknown, a pilot test should be conducted to decide the optimal dilution ratio for your samples.</p> <p>Some PubMed article(s) citing the expression level of this target are as follows:</p> <p>Boster Bio's internal QC testing used:</p> <p>Western Blot (1-2ug/ml)</p> <p>Immunohistochemistry (Formalin-fixed) (1-2ug/ml for 30 minutes at RT)(Staining of formalin-fixed tissues requires heating tissue sections in 10mM Tris with 1mM EDTA, pH 9.0, for 45 min at 95&degC followed by cooling at RT for 20 minutes)</p> <p>Optimal dilution for a specific application should be determined.</p>

Anti-Alpha-1-Antitrypsin (SERPINA1) (Hepatocellular & Histiocytic Marker) Monoclonal Antibody (M00720) Images



Formalin-fixed, paraffin-embedded human Tonsil stained with Anti-Alpha-1-Antitrypsin Mouse Monoclonal Antibody (AAT/1379).

2 Publications Citing This Product

1. PubMed ID: 30440141, Clinical and pathological characteristics of IgG4-related interstitial lung disease
2. PubMed ID: 29434730, Lv X, Gao F, Liu Q, Zhang S, Huang Z, Zhu Y, Zong H, Li Q, Li S. Exp Ther Med. 2018 Feb;15(2):1465-1473. doi: 10.3892/etm.2017.5554. Epub 2017 Nov 23. Clinical and pathological characteristics of IgG4-related interstitial lung disease

Visit bosterbio.com/anti-alpha-1-antitrypsin-serpina1-hepatocellular-amp-histiocytic-marker-antibody-m00720-boster.html to see all 2 publications.

Submit a product review to Biocompare.com

Submit a review of this product to Biocompare.com to receive a \$20 Amazon.com giftcard! Your reviews help your fellow scientists make the right decisions. Thank you for your contribution.



Anti-Alpha-1-Antitrypsin (SERPINA1) (Hepatocellular & Histiocytic Marker) Monoclonal Antibody