

Anti-Smad1 Rabbit Monoclonal Antibody

Catalog Number: M00728-1

About SMAD1

Dynamin-related GTPase required for mitochondrial fusion and regulation of apoptosis. May form a diffusion barrier for proteins stored in mitochondrial cristae. Proteolytic processing in response to intrinsic apoptotic signals may lead to disassembly of OPA1 oligomers and release of the caspase activator cytochrome C (CYCS) into the mitochondrial intermembrane space.

Overview

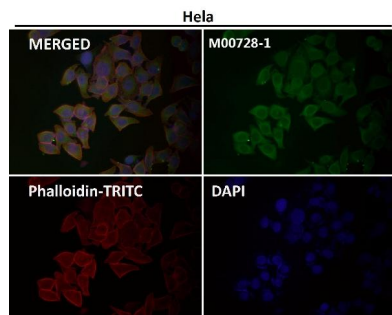
| | |
|----------------------|---|
| Product Name | Anti-Smad1 Rabbit Monoclonal Antibody |
| Reactive Species | Human, Mouse |
| Description | Boster Bio Anti-Smad1 Rabbit Monoclonal Antibody catalog # M00728-1. Tested in WB, ICC/IF applications. This antibody reacts with Human, Mouse. |
| Application | IF, ICC, WB |
| Clonality | Monoclonal CAC-19 |
| Formulation | Rabbit IgG in phosphate buffered saline, pH 7.4, 150mM NaCl, 0.02% sodium azide and 50% glycerol, 0.4-0.5mg/ml BSA. |
| Storage Instructions | Store at -20°C for one year. For short term storage and frequent use, store at 4°C for up to one month. Avoid repeated freeze-thaw cycles. |
| Host | Rabbit |
| Uniprot ID | Q15797 |

Technical Details

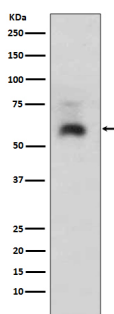
| | |
|---------------------|--|
| Immunogen | A synthesized peptide derived from human Smad1 |
| Isotype | Rabbit IgG |
| Form | Liquid |
| Concentration | Actual concentration vary by lot. Use suggested dilution ratio to decide dilution procedure. |
| Purification | Affinity-chromatography |
| Suggested Dilutions | Dilute the sample so that the expected range of concentrations fall within the detection range of this kit. If the expected range of concentration is unknown, a pilot test should be conducted to decide the optimal dilution ratio for your samples. Some PubMed article(s) citing the expression level of this target are as follows: Boster Bio's internal QC testing used: |

| | |
|--|--------------------------------------|
| | WB 1:500-1:2000 ICC/IF 1:50-1:200 |
|--|--------------------------------------|

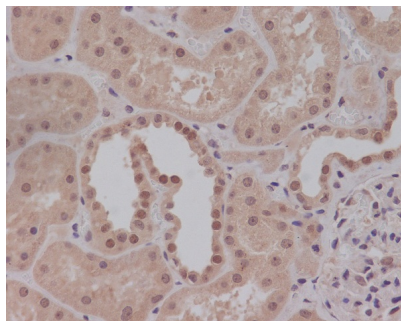
Anti-Smad1 Rabbit Monoclonal Antibody (M00728-1) Images



Immunofluorescent analysis using the Antibody at 1:50 dilution.



Western blot analysis of Smad1 expression in HeLa cell lysate.



Immunohistochemical analysis of paraffin-embedded human kidney, using Smad1 Antibody.

Submit a product review to Biocompare.com

Submit a review of this product to Biocompare.com to receive a \$20 Amazon.com giftcard! Your reviews help your fellow scientists make the right decisions. Thank you for your contribution.



Anti-Smad1 Rabbit Monoclonal Antibody