

## Anti-HCG Holo (Pregnancy & Choriocarcinoma Marker) Monoclonal Antibody

Catalog Number: M00739-1

### About CGA (HCG-alpha) & CGB (HCG-beta)

This monoclonal antibody is a very special because it reacts ONLY with the intact-HCG and not with either free alpha- or free beta-chain of HCG. HCG is a glycoprotein and is composed of two non-identical, non-covalently linked polypeptide chains designated as the subunit is identical to that of thyroid stimulating hormone (TSH) follicle stimulating hormone (FSH), and luteinizing hormone (LH). HCG is secreted in large quantities by normal trophoblasts. It is present only in trace amounts in non-pregnant urine and sera but rises sharply during pregnancy. HCG MAb detects cells and tumors of trophoblastic origin such as choriocarcinoma. Large cell carcinoma and adenocarcinoma of the lung demonstrate anti-hCG positivity in 90% and 60% of cases respectively. 20% of lung squamous cell carcinomas are positive. HCG expression by non-trophoblastic tumors may indicate aggressive behavior.

### Overview

Product Name	Anti-HCG Holo (Pregnancy & Choriocarcinoma Marker) Monoclonal Antibody
Reactive Species	Human
Description	Boster Bio Anti-HCG Holo (Pregnancy & Choriocarcinoma Marker) Monoclonal Antibody (Catalog # M00739-1). Tested in IHC applications. This antibody reacts with Human.
Conjugate	Biotin
Application	IHC
Clonality	Monoclonal Clone: HCGab/52
Formulation	Prepared in 10mM PBS with 0.05% BSA & 0.05% azide. Also available WITHOUT BSA & azide at 1.0mg/ml.
Storage Instructions	Antibody with azide - store at 2 to 8°C. Antibody without azide - store at -20 to -80°C. Antibody is stable for 24 months. Non-hazardous. No MSDS required.
Host	Mouse
Uniprot ID	P01215; P01233

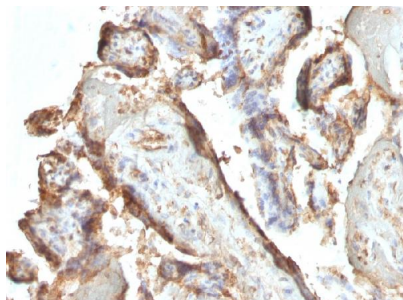
### Technical Details

Immunogen	Purified hCG protein
Predicted Reactive Species	Bovine, Canine, Mouse, Orangutan, Pig, Rabbit, Rat, Deer
Cross Reactivity	Does not cross-react with primate, avian or amphibian GR.
Isotype	IgG1, kappa

Form	Liquid
Concentration	Purified antibody with BSA and azide at 200ug/ml
Purification	200ug/ml of antibody purified from Bioreactor Concentrate by Protein A/G.
Suggested Dilutions	<p>Dilute the sample so that the expected range of concentrations fall within the detection range of this kit.</p> <p>If the expected range of concentration is unknown, a pilot test should be conducted to decide the optimal dilution ratio for your samples.</p> <p>Some PubMed article(s) citing the expression level of this target are as follows:</p> <p>Boster Bio's internal QC testing used:</p> <p>Immunohistochemistry (Formalin-fixed) (1-2ug/ml for 30 minutes at RT)(Staining of formalin-fixed tissues requires heating tissue sections in 10mM Tris with 1mM EDTA, pH 9.0, for 45 min at 95&amp;degC followed by cooling at RT for 20 minutes)</p> <p>Optimal dilution for a specific application should be determined.</p>

## Anti-HCG Holo (Pregnancy & Choriocarcinoma Marker) Monoclonal Antibody (M00739-1) Images

---



Formalin-fixed, paraffin-embedded human Placenta stained with Anti-hCG Mouse Monoclonal Antibody (HCGab/52)

---

### Submit a product review to Biocompare.com

Submit a review of this product to Biocompare.com to receive a \$20 Amazon.com giftcard! Your reviews help your fellow scientists make the right decisions. Thank you for your contribution.



Anti-HCG Holo (Pregnancy & Choriocarcinoma Marker) Monoclonal Antibody