

## Anti-HCG-alpha (Pregnancy & Choriocarcinoma Marker) Monoclonal Antibody

Catalog Number: M00739

### About CGA

This monoclonal antibody reacts with a protein of ~13kDa, identified as alpha sub-unit of HCG. HCG is a glycoprotein, which is secreted in large quantities by normal trophoblasts. It is present only in trace amounts in non-pregnant urine and sera but rises sharply during pregnancy. HCG is composed of two non-identical, non-covalently linked polypeptide chains designated as the subunit is identical to that of thyroid stimulating hormone (TSH) follicle stimulating hormone (FSH), and luteinizing hormone (LH).

### Overview

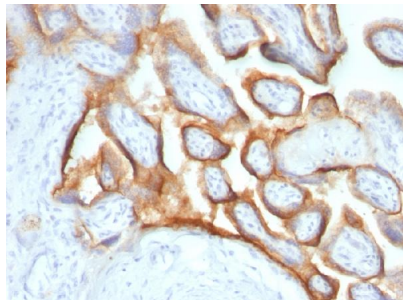
Product Name	Anti-HCG-alpha (Pregnancy & Choriocarcinoma Marker) Monoclonal Antibody
Reactive Species	Human
Description	Boster Bio Anti-HCG-alpha (Pregnancy & Choriocarcinoma Marker) Monoclonal Antibody (Catalog # M00739). Tested in IHC applications. This antibody reacts with Human.
Conjugate	Biotin
Application	IHC
Clonality	Monoclonal Clone: SPM552
Formulation	Prepared in 10mM PBS with 0.05% BSA & 0.05% azide. Also available WITHOUT BSA & azide at 1.0mg/ml.
Storage Instructions	Antibody with azide - store at 2 to 8°C. Antibody without azide - store at -20 to -80°C. Antibody is stable for 24 months. Non-hazardous. No MSDS required.
Host	Mouse
Uniprot ID	P01215

### Technical Details

Immunogen	Recombinant hCG alpha protein
Predicted Reactive Species	Bovine, Canine, Mouse, Orangutan, Pig, Rabbit, Rat, Deer
Cross Reactivity	Does not cross-react with primate, avian or amphibian GR.
Isotype	IgG1, kappa
Form	Liquid
Concentration	Purified antibody with BSA and azide at 200ug/ml

Purification	200ug/ml of antibody purified from Bioreactor Concentrate by Protein A/G.
Suggested Dilutions	<p>Dilute the sample so that the expected range of concentrations fall within the detection range of this kit.</p> <p>If the expected range of concentration is unknown, a pilot test should be conducted to decide the optimal dilution ratio for your samples.</p> <p>Some PubMed article(s) citing the expression level of this target are as follows:</p> <p>Boster Bio's internal QC testing used:</p> <p>Immunohistochemistry (Formalin-fixed) (1-2ug/ml for 30 minutes at RT)(Staining of formalin-fixed tissues requires heating tissue sections in 10mM Tris with 1mM EDTA, pH 9.0, for 45 min at 95&amp;degC followed by cooling at RT for 20 minutes)</p> <p>Optimal dilution for a specific application should be determined.</p>

## Anti-HCG-alpha (Pregnancy & Choriocarcinoma Marker) Monoclonal Antibody (M00739) Images



Formalin-fixed, paraffin-embedded human Placenta stained with Anti-hCG alpha Monoclonal Antibody (SPM552).

### Submit a product review to Biocompare.com

Submit a review of this product to Biocompare.com to receive a \$20 Amazon.com giftcard! Your reviews help your fellow scientists make the right decisions. Thank you for your contribution.



Anti-HCG-alpha (Pregnancy & Choriocarcinoma Marker) Monoclonal Antibody