

Anti-PKC alpha PRKCA Rabbit Monoclonal Antibody

Catalog Number: M00743

About PRKCA

Dynamin-related GTPase required for mitochondrial fusion and regulation of apoptosis. May form a diffusion barrier for proteins stored in mitochondrial cristae. Proteolytic processing in response to intrinsic apoptotic signals may lead to disassembly of OPA1 oligomers and release of the caspase activator cytochrome C (CYCS) into the mitochondrial intermembrane space.

Overview

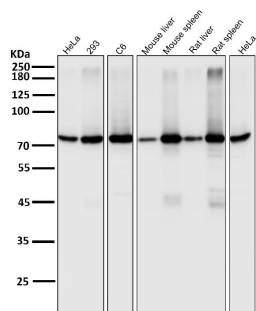
Product Name	Anti-PKC alpha PRKCA Rabbit Monoclonal Antibody
Reactive Species	Human, Mouse, Rat
Description	Boster Bio Anti-PKC alpha PRKCA Rabbit Monoclonal Antibody catalog # M00743. Tested in WB, IHC, ICC/IF, IP, Flow Cytometry applications. This antibody reacts with Human, Mouse, Rat.
Application	Flow Cytometry, IP, IF, IHC, ICC, WB
Clonality	Monoclonal CHO-16
Formulation	Rabbit IgG in phosphate buffered saline, pH 7.4, 150mM NaCl, 0.02% sodium azide and 50% glycerol, 0.4-0.5mg/ml BSA.
Storage Instructions	Store at -20°C for one year. For short term storage and frequent use, store at 4°C for up to one month. Avoid repeated freeze-thaw cycles.
Host	Rabbit
Uniprot ID	P17252

Technical Details

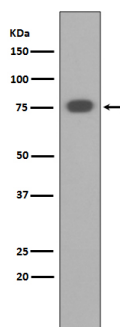
Immunogen	A synthesized peptide derived from human PKC alpha
Isotype	Rabbit IgG
Form	Liquid
Concentration	Actual concentration vary by lot. Use suggested dilution ratio to decide dilution procedure.
Purification	Affinity-chromatography
Suggested Dilutions	Dilute the sample so that the expected range of concentrations fall within the detection range of this kit. If the expected range of concentration is unknown, a pilot test should be conducted to decide the optimal dilution ratio for your samples. Some PubMed article(s) citing the expression level of this target are as follows: Boster Bio's internal QC testing used:

	WB 1:1000-1:2000 IHC 1:50-1:200 ICC/IF 1:50-1:200 IP 1:50 FC 1:50
--	---

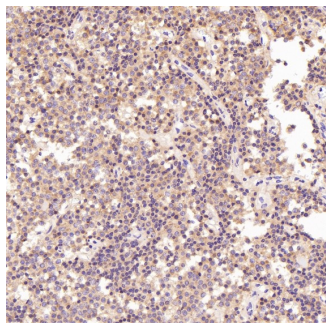
Anti-PKC alpha PRKCA Rabbit Monoclonal Antibody (M00743) Images



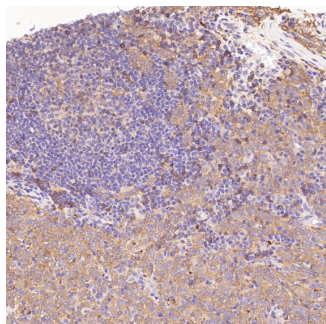
All lanes use the Antibody at 1:3K dilution for 1 hour at room temperature.



Western blot analysis of PKC alpha expression in HEK293 cell lysate.

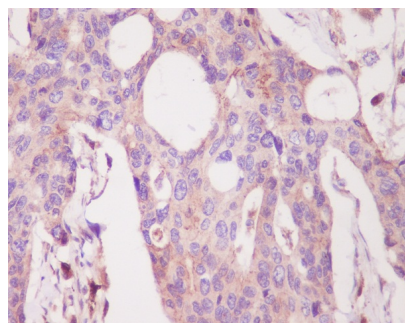
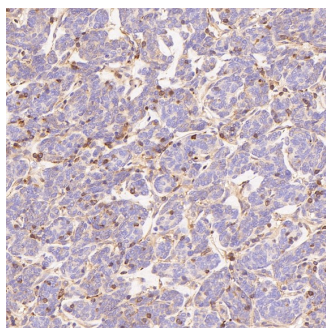


Immunohistochemical analysis of paraffin-embedded Human pituitary tumor, using the Antibody at 1:50 dilution.

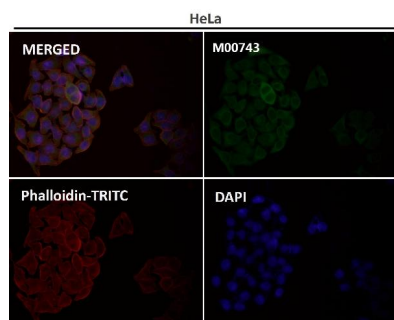


Immunohistochemical analysis of paraffin-embedded Human melanoma, using the Antibody at 1:50 dilution.

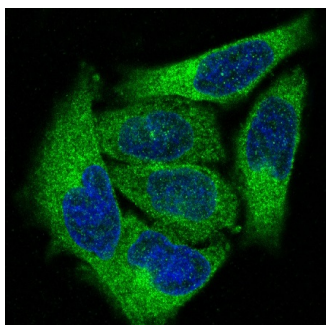
Immunohistochemical analysis of paraffin-embedded Human thymoma, using the Antibody at 1:300 dilution.



Immunohistochemical analysis of paraffin-embedded human colon, using PKC alpha Antibody.



Immunofluorescent analysis using the Antibody at 1:50 dilution.



Immunofluorescent analysis of HeLa cells, using PKC alpha Antibody .

5 Publications Citing This Product

1. PubMed ID: 26176219, Molecular Mechanism of the Cell Death Induced by the Histone Deacetylase Pan Inhibitor LBH589 (Panobinostat) in Wilms Tumor Cells
2. PubMed ID: 26279755, Different localization and expression of protein kinase C-beta in kidney cortex of diabetic nephropathy mice and its role in telmisartan treatment
3. PubMed ID: 19005168, Ge C, Yu M, Petite Jn, Zhang C. Biol Reprod. 2009 Mar;80(3):528-36. Doi: 10.1095/Biolreprod.108.072728. Epub 2008 Nov 12. Epidermal Growth Factor-Induced Proliferation Of Chicken Primordial Germ Cells: Involvement Of Calcium/Protein Kinase C And ...

Visit bosterbio.com/anti-pkc-alpha-rabbit-monoclonal-antibody-m00743-boster.html to see all 5 publications.

Submit a product review to Biocompare.com

Submit a review of this product to Biocompare.com to receive a \$20 Amazon.com giftcard! Your reviews help your fellow scientists make the right decisions. Thank you for your contribution.



Anti-PKC alpha PRKCA Rabbit Monoclonal Antibody