

Anti-Cyclin B1 CCNB1 Rabbit Monoclonal Antibody

Catalog Number: M00745-2

About CCNB1

Dynamin-related GTPase required for mitochondrial fusion and regulation of apoptosis. May form a diffusion barrier for proteins stored in mitochondrial cristae. Proteolytic processing in response to intrinsic apoptotic signals may lead to disassembly of OPA1 oligomers and release of the caspase activator cytochrome C (CYCS) into the mitochondrial intermembrane space.

Overview

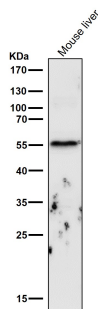
Product Name	Anti-Cyclin B1 CCNB1 Rabbit Monoclonal Antibody
Reactive Species	Human, Mouse
Description	Boster Bio Anti-Cyclin B1 CCNB1 Rabbit Monoclonal Antibody catalog # M00745-2. Tested in WB, IHC, ICC/IF, Flow Cytometry applications. This antibody reacts with Human, Mouse.
Application	Flow Cytometry, IF, IHC, ICC, WB
Clonality	Monoclonal EOG-3
Formulation	Rabbit IgG in phosphate buffered saline, pH 7.4, 150mM NaCl, 0.02% sodium azide and 50% glycerol, 0.4-0.5mg/ml BSA.
Storage Instructions	Store at -20°C for one year. For short term storage and frequent use, store at 4°C for up to one month. Avoid repeated freeze-thaw cycles.
Host	Rabbit
Uniprot ID	P14635

Technical Details

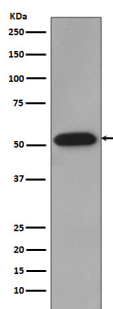
Immunogen	A synthesized peptide derived from human Cyclin B1
Isotype	Rabbit IgG
Form	Liquid
Concentration	Actual concentration vary by lot. Use suggested dilution ratio to decide dilution procedure.
Purification	Affinity-chromatography
Suggested Dilutions	Dilute the sample so that the expected range of concentrations fall within the detection range of this kit. If the expected range of concentration is unknown, a pilot test should be conducted to decide the optimal dilution ratio for your samples. Some PubMed article(s) citing the expression level of this target are as follows: Boster Bio's internal QC testing used:

	WB 1:500-1:2000 IHC 1:50-1:200 ICC/IF 1:50-1:200 FC 1:100
--	--

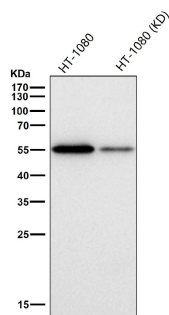
Anti-Cyclin B1 CCNB1 Rabbit Monoclonal Antibody (M00745-2) Images



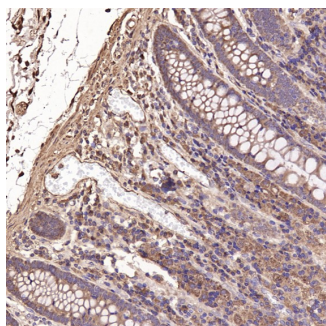
All lanes use the Antibody at 1:6k dilution for 1 hour at room temperature.



Western blot analysis of Cyclin B1 expression in HeLa cell lysate.

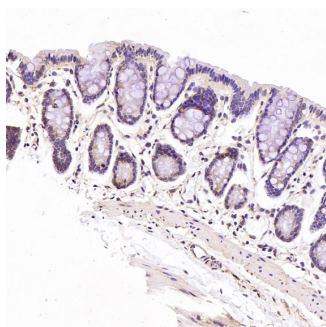
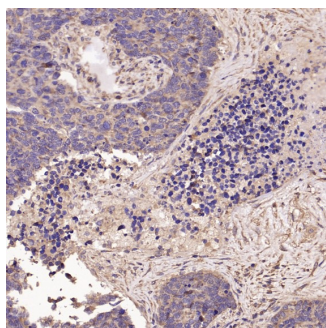


All lanes use the Antibody at 1:1k dilution for 1 hour at room temperature.

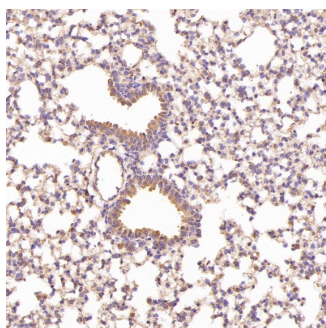


Immunohistochemical analysis of paraffin-embedded Human colon, using the Antibody at 1:500 dilution.

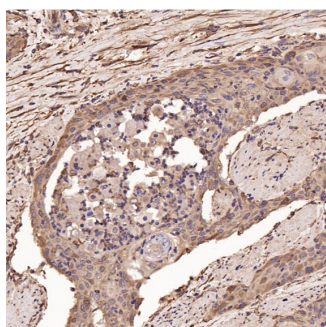
Immunohistochemical analysis of paraffin-embedded Human lung large cell cancer, using the Antibody at 1:100 dilution.



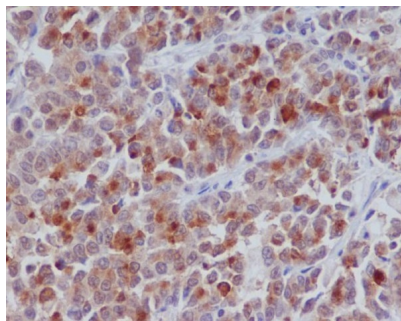
Immunohistochemical analysis of paraffin-embedded Rat stomach, using the Antibody at 1:200 dilution.



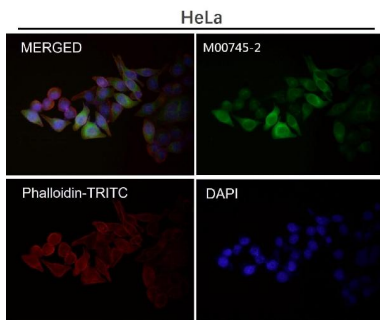
Immunohistochemical analysis of paraffin-embedded Mouse lung, using the Antibody at 1:200 dilution.



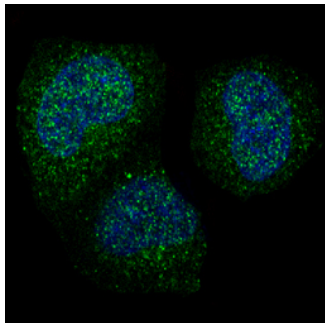
Immunohistochemical analysis of paraffin-embedded Human esophageal carcinoma, using the Antibody at 1:500 dilution.



Immunohistochemical analysis of paraffin-embedded human colon cancer, using Cyclin B1 Antibody.



Immunofluorescent analysis using the Antibody at 1:50 dilution.



Immunofluorescent analysis of HeLa cells, using Cyclin B1 Antibody .

5 Publications Citing This Product

1. PubMed ID: 31102746, Zhang H, Su Y, Wang J, Gao Y, Yang F, Li G, Shi Q. Ginsenoside Rb1 promotes the growth of mink hair follicle via PI3K/AKT/GSK-3 β signaling pathway. Life Sci. 2019 Jul 15;229:210-218. doi:10.1016/j.lfs.2019.05.033. Epub 2019 May 16. PMID:31102746.
2. PubMed ID: 33066831, Nan W, Li G, Si H, Lou Y, Wang D, Guo R, Zhang H. All-trans-retinoic acid inhibits mink hair follicle growth via inhibiting proliferation and inducing apoptosis of dermal papilla cells through TGF- β 2/Smad2/3 pathway. Acta Histochem. 2020 Oct;122(7):151603. doi: 10.1074/Jbc.M110.136929. Epub 2011 Feb 10. Rpb5-Mediating Protein Is Required For The Proliferation Of Hepatocellular Carcinoma Cells.
3. PubMed ID: 21310960, Yang H, Gu J, Zheng Q, Li M, Lian X, Miao J, Jiang J, Wei W. J Biol Chem. 2011 Apr 1;286(13):11865-74. Doi: 10.1074/Jbc.M110.136929. Epub 2011 Feb 10. Rpb5-Mediating Protein Is Required For The Proliferation Of Hepatocellular Carcinoma Cells.

Visit bosterbio.com/anti-cyclin-b1-rabbit-monoclonal-antibody-m00745-2-boster.html to see all 5 publications.

Submit a product review to Biocompare.com

Submit a review of this product to Biocompare.com to receive a \$20 Amazon.com giftcard! Your reviews help your fellow scientists make the right decisions. Thank you for your contribution.



Anti-Cyclin B1 CCNB1 Rabbit Monoclonal Antibody