

Anti-Cyclin B1 CCNB1 Rabbit Monoclonal Antibody

Catalog Number: M00745-3

About CCNB1

Dynamin-related GTPase required for mitochondrial fusion and regulation of apoptosis. May form a diffusion barrier for proteins stored in mitochondrial cristae. Proteolytic processing in response to intrinsic apoptotic signals may lead to disassembly of OPA1 oligomers and release of the caspase activator cytochrome C (CYCS) into the mitochondrial intermembrane space.

Overview

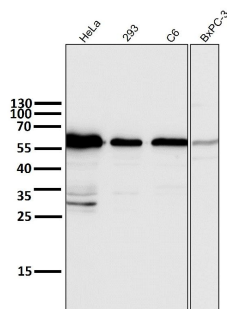
Product Name	Anti-Cyclin B1 CCNB1 Rabbit Monoclonal Antibody
Reactive Species	Human
Description	Boster Bio Anti-Cyclin B1 CCNB1 Rabbit Monoclonal Antibody catalog # M00745-3. Tested in WB, IHC, ICC/IF, IP, Flow Cytometry applications. This antibody reacts with Human.
Application	Flow Cytometry, IP, IF, IHC, ICC, WB
Clonality	Monoclonal CIC-3
Formulation	Rabbit IgG in phosphate buffered saline, pH 7.4, 150mM NaCl, 0.02% sodium azide and 50% glycerol, 0.4-0.5mg/ml BSA.
Storage Instructions	Store at -20°C for one year. For short term storage and frequent use, store at 4°C for up to one month. Avoid repeated freeze-thaw cycles.
Host	Rabbit
Uniprot ID	P14635

Technical Details

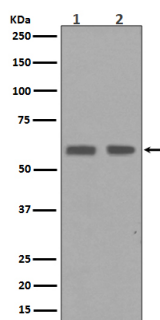
Immunogen	A synthesized peptide derived from human Cyclin B1
Isotype	Rabbit IgG
Form	Liquid
Concentration	Actual concentration vary by lot. Use suggested dilution ratio to decide dilution procedure.
Purification	Affinity-chromatography
Suggested Dilutions	Dilute the sample so that the expected range of concentrations fall within the detection range of this kit. If the expected range of concentration is unknown, a pilot test should be conducted to decide the optimal dilution ratio for your samples. Some PubMed article(s) citing the expression level of this target are as follows: Boster Bio's internal QC testing used:

	WB 1:1000-1:2000 IHC 1:50-1:200 ICC/IF 1:50-1:200 IP 1:50 FC 1:30
--	---

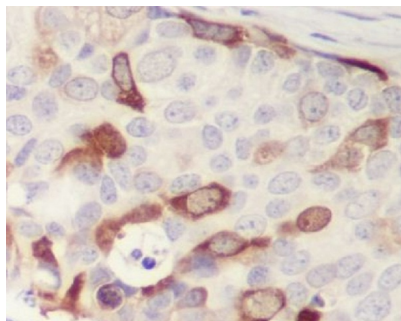
Anti-Cyclin B1 CCNB1 Rabbit Monoclonal Antibody (M00745-3) Images



All lanes use the Antibody at 1:6K dilution for 1 hour at room temperature.



Western blot analysis of Cyclin B1 expression in (1) HaCaT cell lysates; (2) HepG2 cell lysate.



Immunohistochemical analysis of paraffin-embedded human breast cancer, using Cyclin B1 Antibody.

3 Publications Citing This Product

1. PubMed ID: 31102746, Zhang H, Su Y, Wang J, Gao Y, Yang F, Li G, Shi Q. Ginsenoside Rb1 promotes the growth of mink hair follicle via PI3K/AKT/GSK-3 β signaling pathway. Life Sci. 2019 Jul 15;229:210-218. doi:10.1016/j.lfs.2019.05.033. Epub 2019 May 16. PMID:31102746.
2. PubMed ID: 21310960, Yang H, Gu J, Zheng Q, Li M, Lian X, Miao J, Jiang J, Wei W. J Biol Chem. 2011 Apr 1;286(13):11865-74. Doi: 10.1074/Jbc.M110.136929. Epub 2011 Feb 10. Rpb5-Mediating Protein Is Required For The Proliferation Of Hepatocellular Carcinoma Cells.
3. PubMed ID: 24228108, Li K, Zhu Zc, Liu Yj, Liu Jw, Wang Ht, Xiong Zq, Shen X, Hu Zl, Zheng J. Int J Clin Exp Pathol. 2013 Sep 15;6(11):2460-7. Ecollection 2013. Zfx Knockdown Inhibits Growth And Migration Of Non-Small Cell Lung Carcinoma Cell Line H1299.

Visit bosterbio.com/anti-cyclin-b1-rabbit-monoclonal-antibody-m00745-3-boster.html to see all 3 publications.

Submit a product review to Biocompare.com

Submit a review of this product to Biocompare.com to receive a \$20 Amazon.com giftcard! Your reviews help your fellow scientists make the right decisions. Thank you for your contribution.



Anti-Cyclin B1 CCNB1 Rabbit Monoclonal Antibody