

## Anti-DDX3 DDX3X Antibody (Monoclonal, ABM27H2)

Catalog Number: M00751

### About DDX3X

This monoclonal antibody is a very special because it reacts ONLY with the intact-HCG and not with either free alpha- or free beta-chain of HCG. HCG is a glycoprotein and is composed of two non-identical, non-covalently linked polypeptide chains designated as the subunit is identical to that of thyroid stimulating hormone (TSH) follicle stimulating hormone (FSH), and luteinizing hormone (LH). HCG is secreted in large quantities by normal trophoblasts. It is present only in trace amounts in non-pregnant urine and sera but rises sharply during pregnancy. HCG MAb detects cells and tumors of trophoblastic origin such as choriocarcinoma. Large cell carcinoma and adenocarcinoma of the lung demonstrate anti-hCG positivity in 90% and 60% of cases respectively. 20% of lung squamous cell carcinomas are positive. HCG expression by non-trophoblastic tumors may indicate aggressive behavior.

### Overview

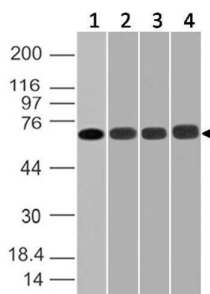
Product Name	Anti-DDX3 DDX3X Antibody (Monoclonal, ABM27H2)
Reactive Species	Human, Mouse
Description	Boster Bio Anti-DDX3 DDX3X Antibody (Monoclonal, ABM27H2) (Catalog# M00751). Tested in WB application(s). This antibody reacts with Human, Mouse.
Conjugate	Biotin
Application	WB
Clonality	Monoclonal ABM27H2
Formulation	100 ug in 200 ul PBS containing 0.05% BSA and 0.05% sodium azide.
Storage Instructions	Store the antibody at 4°C, stable for 6 months. For long-term storage, store at -20°C. Avoid repeated freeze and thaw cycles.
Host	Mouse
Uniprot ID	O00571

### Technical Details

Immunogen	A partial length recombinant DDX3 protein (amino acids 10-230)
Predicted Reactive Species	Bovine, Canine, Mouse, Orangutan, Pig, Rabbit, Rat, Deer
Cross Reactivity	Does not cross-react with primate, avian or amphibian GR.
Isotype	IgG2b Kappa
Form	Liquid

Concentration	0.5-1mg/ml, actual concentration vary by lot. Use suggested dilution ratio to decide dilution procedure.
Purification	Protein G Chromatography
Suggested Dilutions	<p>Dilute the sample so that the expected range of concentrations fall within the detection range of this kit.</p> <p>If the expected range of concentration is unknown, a pilot test should be conducted to decide the optimal dilution ratio for your samples.</p> <p>Some PubMed article(s) citing the expression level of this target are as follows:</p> <p>Boster Bio's internal QC testing used:</p> <p>Western blot: 2-4 µg/ml</p>

## Anti-DDX3 DDX3X Antibody (Monoclonal, ABM27H2) (M00751) Images



Western blot analysis of DDX3. Anti-DDX3 antibody (Clone: ABM27H2) was used at 2 ug/ml on (1) MCF-7, (2) NIH3T3 (3) HEK293 and (4) EL-4 lysates.

### Submit a product review to Biocompare.com

Submit a review of this product to Biocompare.com to receive a \$20 Amazon.com giftcard! Your reviews help your fellow scientists make the right decisions. Thank you for your contribution.



Anti-DDX3 DDX3X Antibody (Monoclonal, ABM27H2)