

Anti-CD29 ITGB1 Rabbit Monoclonal Antibody, Clone#RM285

Catalog Number: M00772-3

Overview

Product Name	Anti-CD29 ITGB1 Rabbit Monoclonal Antibody, Clone#RM285
Reactive Species	Human
Description	Boster Bio Anti-CD29 ITGB1 Rabbit Monoclonal Antibody, Clone#RM285 (Catalog # M00772-3). Tested in IHC, WB applications. This antibody reacts with Human.
Application	IHC, WB
Clonality	Monoclonal RM285
Formulation	50% Glycerol/PBS with 1% BSA and 0.09% sodium azide
Storage Instructions	Store at -20°C for one year. Avoid repeated freeze-thaw cycles.
Host	Rabbit
Uniprot ID	P05556

Technical Details

Immunogen	A peptide corresponding to the residues in human CD29 (Integrin beta-1).
Cross Reactivity	This antibody reacts to human CD29 (Integrin beta-1).
Isotype	Rabbit IgG
Form	Liquid
Concentration	0.5-1mg/ml, actual concentration vary by lot. Use suggested dilution ratio to decide dilution procedure.
Purification	Protein A affinity purified from an animal origin-free culture supernatant
Suggested Dilutions	<p>Dilute the sample so that the expected range of concentrations fall within the detection range of this kit.</p> <p>If the expected range of concentration is unknown, a pilot test should be conducted to decide the optimal dilution ratio for your samples.</p> <p>Some PubMed article(s) citing the expression level of this target are as follows:</p> <p>Boster Bio's internal QC testing used:</p> <p>Immunohistochemistry (IHC): 1:100-1:200 dilution</p> <p>WB: 1:2000-1:4000 dilution.</p>

Anti-CD29 ITGB1 Rabbit Monoclonal Antibody, Clone#RM285 (M00772-3) Images

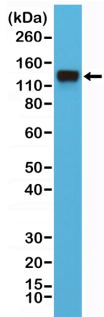


Figure 1. Western Blotting result
Western Blot of HeLa cell lysates using anti-CD29 rabbit monoclonal antibody (clone RM285) at a 1:4000 dilution.

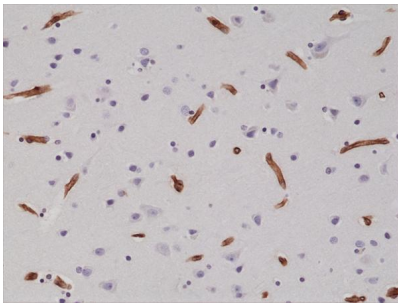


Figure 2. IHC result
Immunohistochemical staining of formalin fixed and paraffin embedded human brain tissue sections using anti-CD29 rabbit monoclonal antibody (clone RM285) at a 1:200 dilution.

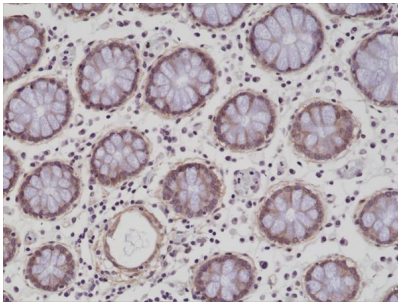


Figure 3. IHC result
Immunohistochemical staining of formalin fixed and paraffin embedded human colon tissue sections using anti-CD29 rabbit monoclonal antibody (clone RM285) at a 1:200 dilution.

1 Publications Citing This Product

1. PubMed ID: 26616638, Isolation and morphological characterization of ovine amniotic fluid mesenchymal stem cells

Visit bosterbio.com/anti-cd29-rabbit-monoclonal-antibody-clone-rm285-m00772-3-boster.html to see all 1 publications.

Submit a product review to Biocompare.com

Submit a review of this product to Biocompare.com to receive a \$20 Amazon.com giftcard! Your reviews help your fellow scientists make the right decisions. Thank you for your contribution.



Anti-CD29 ITGB1 Rabbit Monoclonal Antibody, Clone#RM285