

Anti-NLRP1/NALP1 Antibody (Monoclonal, Nalpy1-4)

Catalog Number: M00777

About NLRP1

ZAP-70 (Zeta-chain-associated protein kinase 70) encodes an enzyme belonging to the protein tyrosine kinase family, and it plays a role in T-cell development and lymphocyte activation. This enzyme, which is phosphorylated on tyrosine residues upon T-cell antigen receptor (TCR) stimulation, functions in the initial step of TCR-mediated signal transduction in combination with the Src family kinases, Lck and Fyn. This enzyme is also essential for thymocyte development. Mutations in this gene cause selective T-cell defect, a severe combined immunodeficiency disease characterized by a selective absence of CD8-positive T-cells. Two transcript variants that encode different isoforms have been found for this gene.

Overview

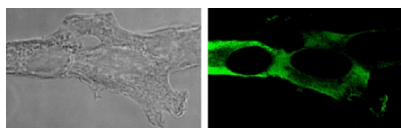
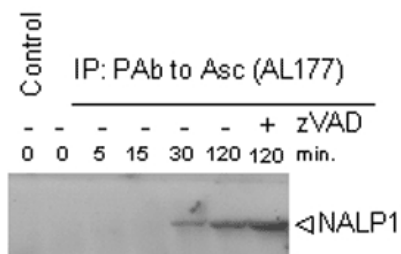
Product Name	Anti-NLRP1/NALP1 Antibody (Monoclonal, Nalpy1-4)
Reactive Species	Human
Description	Boster Bio Anti-NLRP1/NALP1 Antibody (Monoclonal, Nalpy1-4) catalog # M00777. Tested in IP applications. This antibody reacts with Human.
Application	IP
Clonality	Monoclonal Nalpy1-4
Formulation	Each vial contains 0.02% sodium azide.
Storage Instructions	Store vial at -20°C prior to opening. Aliquot contents and freeze at -20°C or below for extended storage. Avoid cycles of freezing and thawing. Centrifuge product if not completely clear after standing at room temperature. This product is stable for several weeks at 4°C as an undiluted liquid. Dilute only prior to immediate use. Expiration date is one (1) year from date of opening.
Host	Mouse
Uniprot ID	Q9C000

Technical Details

Immunogen	Recombinant human NLRP1/NALP1 (NACHT-, LRR-and PYD-containing protein 1) (pyrin domain).
Predicted Reactive Species	Canine
Cross Reactivity	No cross reactivity with other proteins.
Isotype	IgG2b
Form	Liquid
Concentration	0.5-1mg/ml, actual concentration vary by lot. Use suggested dilution ratio to decide dilution procedure.

Purification	Protein G affinity purified.
Suggested Dilutions	<p>Dilute the sample so that the expected range of concentrations fall within the detection range of this kit.</p> <p>If the expected range of concentration is unknown, a pilot test should be conducted to decide the optimal dilution ratio for your samples.</p> <p>Some PubMed article(s) citing the expression level of this target are as follows:</p> <p>Boster Bio's internal QC testing used:</p> <p>User needs to optimize the dilution ratio for this antibody.</p>

Anti-NLRP1/NALP1 Antibody (Monoclonal, Nalpy1-4) (M00777) Images



Submit a product review to Biocompare.com

Submit a review of this product to Biocompare.com to receive a \$20 Amazon.com giftcard! Your reviews help your fellow scientists make the right decisions. Thank you for your contribution.



Anti-NLRP1/NALP1 Antibody (Monoclonal, Nalpy1-4)