

Anti-MAD2L1/Mad2 Monoclonal Antibody

Catalog Number: M00785

About MAD2L1

MAD2L1 (also called mitotic spindle assembly checkpoint protein, MAD2A, MAD2-like 1 and HsMAD2) is a component of the mitotic spindle assembly checkpoint monitors the process of kinetochore-spindle attachment and delays the onset of anaphase when this process is not complete. MAD2L1 inhibits the activity of the anaphase-promoting complex by sequestering CDC20 until all chromosomes are aligned at the metaphase plate. MAD2L1 is related to the MAD2L2 gene located on chromosome 1. This protein has a nuclear localization. A MAD2 pseudogene has been mapped to chromosome 14.

Overview

Product Name	Anti-MAD2L1/Mad2 Monoclonal Antibody
Reactive Species	Human
Description	Boster Bio Anti-MAD2L1/Mad2 Monoclonal Antibody (Catalog # M00785). Tested in IP, WB applications. This antibody reacts with Human.
Application	IP, WB
Clonality	Monoclonal Clone: 17D10 IgG1
Formulation	0.02 M Potassium Phosphate, 0.15 M Sodium Chloride, pH 7.2, 0.01% (w/v) Sodium Azide
Storage Instructions	Store vial at -20°C prior to opening. Aliquot contents and freeze at -20°C or below for extended storage. Avoid cycles of freezing and thawing. Centrifuge product if not completely clear after standing at room temperature. This product is stable for several weeks at 4°C as an undiluted liquid. Dilute only prior to immediate use. Expiration date is one (1) year from date of opening. (Ship on dry ice.)
Host	Mouse
Uniprot ID	Q13257

Technical Details

Immunogen	This protein A purified monoclonal antibody was produced by repeated immunizations with full-length recombinant human MAD2L1 protein.
Predicted Reactive Species	Canine
Isotype	IgG1
Form	Liquid (sterile filtered)
Concentration	1.0 mg/mL by UV absorbance at 280 nm
Purification	This Protein A purified antibody is directed against human MAD2L1 protein. The product was

purified from tissue culture supernatant by chromatography. This antibody has only been tested on human cells. Reactivity against homologues from other sources is not known.

Suggested Dilutions

Dilute the sample so that the expected range of concentrations fall within the detection range of this kit.

If the expected range of concentration is unknown, a pilot test should be conducted to decide the optimal dilution ratio for your samples.

Some PubMed article(s) citing the expression level of this target are as follows:

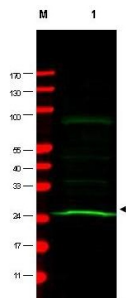
Boster Bio's internal QC testing used:

ELISA: 1:5,000 - 1:20,000

IP: 1:100

WB: 1:200 - 1:2,000

Anti-MAD2L1/Mad2 Monoclonal Antibody (M00785) Images



Western blot analysis of MAD2L1 expression in HeLa whole cell lysate. MAD2L1 at 24KD was detected using mouse anti-MAD2L1 monoclonal antibody (Catalog # M00785) at 1:200. IRDye00 fluorescence image was captured using the Odyssey

Submit a product review to Biocompare.com

Submit a review of this product to Biocompare.com to receive a \$20 Amazon.com giftcard! Your reviews help your fellow scientists make the right decisions. Thank you for your contribution.



Anti-MAD2L1/Mad2 Monoclonal Antibody