

Anti-SHC (SHC1) Mouse Monoclonal Antibody [Clone ID: OTI3A1]

Catalog Number: M00796

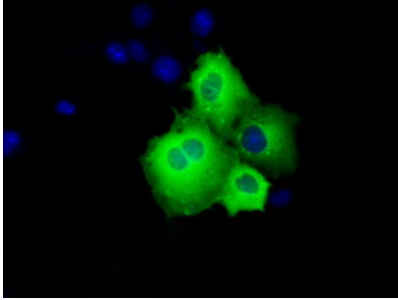
Overview

| | |
|----------------------|---|
| Product Name | Anti-SHC (SHC1) Mouse Monoclonal Antibody [Clone ID: OTI3A1] |
| Reactive Species | Human, Mouse, Rat |
| Description | Boster Bio Anti-SHC1 (SHC) mouse monoclonal antibody, clone OTI3A1 (formerly 3A1). Catalog# M00796. Tested in IF, IHC, IP, WB. This antibody reacts with Human, Mouse, Rat. |
| Conjugate | Unconjugated |
| Application | IP, IF, IHC, WB |
| Clonality | Monoclonal OTI3A1 |
| Formulation | PBS (PH 7.3) containing 1% BSA, 50% glycerol and 0.02% sodium azide. |
| Storage Instructions | Store at -20°C for one year. For short term storage and frequent use, store at 4°C for up to one month. Avoid repeated freeze-thaw cycles. |
| Host | Mouse |
| Uniprot ID | P29353 |

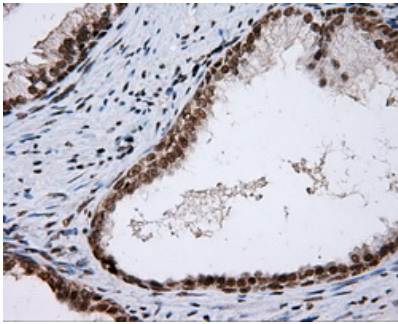
Technical Details

| | |
|---------------------|--|
| Immunogen | Full length human recombinant protein of human SHC1 (NP_003020) produced in HEK293T cell. |
| Isotype | IgG1 |
| Concentration | 1 mg/ml |
| Purification | Purified from mouse ascites fluids or tissue culture supernatant by affinity chromatography (protein A/G) |
| Suggested Dilutions | Dilute the sample so that the expected range of concentrations fall within the detection range of this kit. If the expected range of concentration is unknown, a pilot test should be conducted to decide the optimal dilution ratio for your samples. Some PubMed article(s) citing the expression level of this target are as follows: |

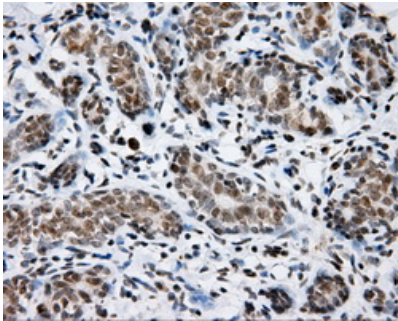
Anti-SHC (SHC1) Mouse Monoclonal Antibody [Clone ID: OTI3A1] (M00796) Images



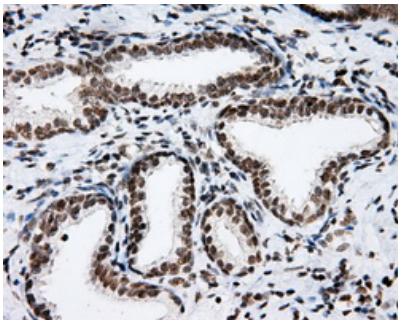
Anti-SHC1 mouse monoclonal antibody (M00796) immunofluorescent staining of COS7 cells transiently transfected by pCMV6-ENTRY SHC1.



Immunohistochemical staining of paraffin-embedded prostate tissue within the normal limits using anti-SHC1 mouse monoclonal antibody. (Heat-induced epitope retrieval by 10mM citric buffer)

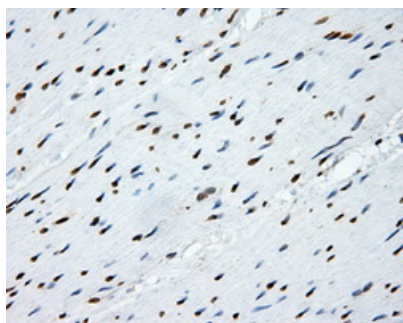
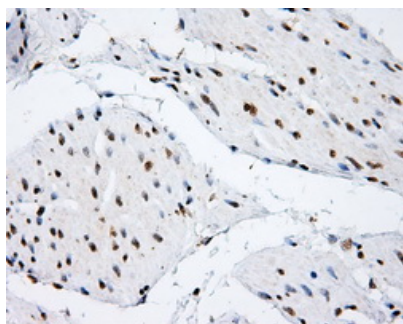


Immunohistochemical staining of paraffin-embedded breast tissue within the normal limits using anti-SHC1 mouse monoclonal antibody. (Heat-induced epitope retrieval by 10mM citric buffer)

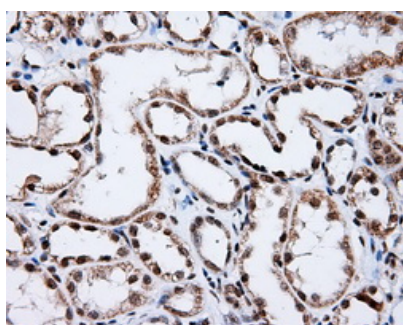


Immunohistochemical staining of paraffin-embedded Carcinoma of prostate tissue using anti-SHC1 mouse monoclonal antibody. (Heat-induced epitope retrieval by 10mM citric buffer)

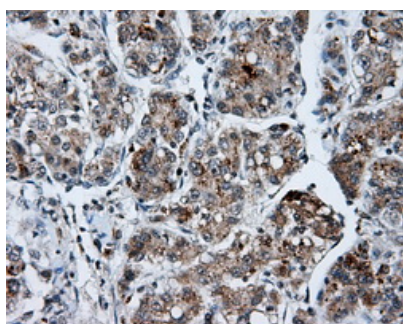
Immunohistochemical staining of paraffin-embedded bladder tissue within the normal limits using anti-SHC1 mouse monoclonal antibody. (Heat-induced epitope retrieval by 10mM citric buffer)



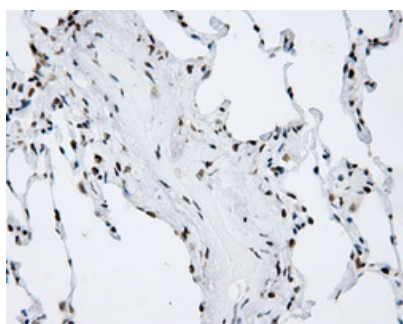
Immunohistochemical staining of paraffin-embedded colon tissue within the normal limits using anti-SHC1 mouse monoclonal antibody. (Heat-induced epitope retrieval by 10mM citric buffer)



Immunohistochemical staining of paraffin-embedded Kidney tissue within the normal limits using anti-SHC1 mouse monoclonal antibody. (Heat-induced epitope retrieval by 10mM citric buffer)



Immunohistochemical staining of paraffin-embedded Carcinoma of liver tissue using anti-SHC1 mouse monoclonal antibody. (Heat-induced epitope retrieval by 10mM citric buffer)



Immunohistochemical staining of paraffin-embedded lung tissue within the normal limits using anti-SHC1 mouse monoclonal antibody. (Heat-induced epitope retrieval by 10mM citric buffer)

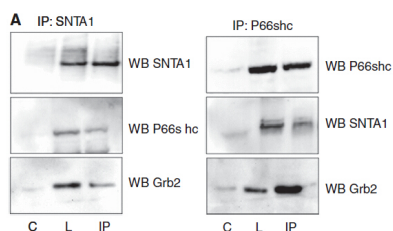
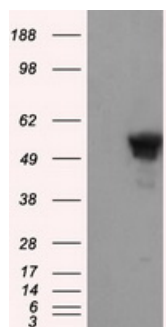


Figure from citation: Immunoprecipitation of SHC1 (p66shc) protein level by using anti-SHC1 antibody in human HBL-100/MCF-7 cell lysates.



HEK293T cells were transfected with the pCMV6-ENTRY control (Left lane) or pCMV6-ENTRY SHC1 (Right lane) cDNA for 48 hrs and lysed. Equivalent amounts of cell lysates (5 ug per lane) were separated by SDS-PAGE and immunoblotted with anti-SHC1.

Submit a product review to Biocompare.com

Submit a review of this product to Biocompare.com to receive a \$20 Amazon.com giftcard! Your reviews help your fellow scientists make the right decisions. Thank you for your contribution.



Anti-SHC (SHC1) Mouse Monoclonal Antibody [Clone ID: OTI3A1]