

Anti-PKC delta PRKCD Rabbit Monoclonal Antibody

Catalog Number: M00822

About PRKCD

Dynamin-related GTPase required for mitochondrial fusion and regulation of apoptosis. May form a diffusion barrier for proteins stored in mitochondrial cristae. Proteolytic processing in response to intrinsic apoptotic signals may lead to disassembly of OPA1 oligomers and release of the caspase activator cytochrome C (CYCS) into the mitochondrial intermembrane space.

Overview

Product Name	Anti-PKC delta PRKCD Rabbit Monoclonal Antibody
Reactive Species	Human, Mouse, Rat
Description	Boster Bio Anti-PKC delta PRKCD Rabbit Monoclonal Antibody catalog # M00822. Tested in WB, IHC, ICC/IF applications. This antibody reacts with Human, Mouse, Rat.
Application	IF, IHC, ICC, WB
Clonality	Monoclonal IHD-16
Formulation	Rabbit IgG in phosphate buffered saline, pH 7.4, 150mM NaCl, 0.02% sodium azide and 50% glycerol, 0.4-0.5mg/ml BSA.
Storage Instructions	Store at -20°C for one year. For short term storage and frequent use, store at 4°C for up to one month. Avoid repeated freeze-thaw cycles.
Host	Rabbit
Uniprot ID	Q05655

Technical Details

Immunogen	A synthesized peptide derived from human PKC delta
Isotype	Rabbit IgG
Form	Liquid
Concentration	Actual concentration vary by lot. Use suggested dilution ratio to decide dilution procedure.
Purification	Affinity-chromatography
Suggested Dilutions	Dilute the sample so that the expected range of concentrations fall within the detection range of this kit. If the expected range of concentration is unknown, a pilot test should be conducted to decide the optimal dilution ratio for your samples. Some PubMed article(s) citing the expression level of this target are as follows: Boster Bio's internal QC testing used:

	WB 1:500-1:2000 IHC 1:50-1:200 ICC/IF 1:50-1:200
--	--

Anti-PKC delta PRKCD Rabbit Monoclonal Antibody (M00822) Images

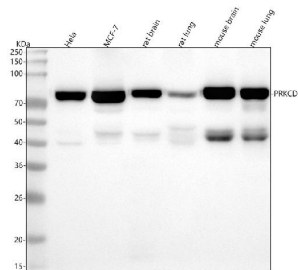


Figure 1. Western blot analysis of PRKCD using anti-PRKCD antibody (M00822).

Electrophoresis was performed on a 5-20% SDS-PAGE gel at 70V (Stacking gel) / 90V (Resolving gel) for 2-3 hours. The sample well of each lane was loaded with 30 ug of sample under reducing conditions.

Lane 1: human Hela whole cell lysates,
Lane 2: human MCF-7 whole cell lysates,
Lane 3: rat brain tissue lysates,
Lane 4: rat lung tissue lysates,
Lane 5: mouse brain tissue lysates,
Lane 6: mouse lung tissue lysates.

After electrophoresis, proteins were transferred to a nitrocellulose membrane at 150 mA for 50-90 minutes. Blocked the membrane with 5% non-fat milk/TBS for 1.5 hour at RT. The membrane was incubated with rabbit anti-PRKCD antigen affinity purified monoclonal antibody (Catalog # M00822) at 1:500 overnight at 4°C, then washed with TBS-0.1%Tween 3 times with 5 minutes each and probed with a goat anti-rabbit IgG-HRP secondary antibody at a dilution of 1:5000 for 1.5 hour at RT. The signal is developed using an Enhanced Chemiluminescent detection (ECL) kit (Catalog # EK1002) with Tanon 5200 system. A specific band was detected for PRKCD at approximately 78 kDa. The expected band size for PRKCD is at 78 kDa.

1 Publications Citing This Product

1. PubMed ID: 33745958, Shi Y, Jiang R, Qin X, Gao A, Hou X, Chen L, Xu X, Guo Y, Chai L, Zhao L, Du X, Wu F. Up-regulation of nPKC contributes to proliferation of mice pulmonary artery smooth muscle cells in hypoxia-induced pulmonary hypertension. Eur J Pharmacol. 2021 Mar 18;174046. doi: 10.1016/j.ejphar.2021.174046. Epub ahead of print. PMID: 33745958.

Visit bosterbio.com/anti-pkc-delta-rabbit-monoclonal-antibody-m00822-boster.html to see all 1 publications.

Submit a product review to Biocompare.com

Submit a review of this product to Biocompare.com to receive a \$20 Amazon.com giftcard! Your reviews help your fellow scientists make the right decisions. Thank you for your contribution.



Anti-PKC delta PRKCD Rabbit Monoclonal Antibody