

Anti-Lactate Dehydrogenase LDHA Rabbit Monoclonal Antibody

Catalog Number: M00825

About LDHA

Dynamin-related GTPase required for mitochondrial fusion and regulation of apoptosis. May form a diffusion barrier for proteins stored in mitochondrial cristae. Proteolytic processing in response to intrinsic apoptotic signals may lead to disassembly of OPA1 oligomers and release of the caspase activator cytochrome C (CYCS) into the mitochondrial intermembrane space.

Overview

Product Name	Anti-Lactate Dehydrogenase LDHA Rabbit Monoclonal Antibody
Reactive Species	Human, Mouse, Rat
Description	Boster Bio Anti-Lactate Dehydrogenase LDHA Rabbit Monoclonal Antibody catalog # M00825. Tested in WB, IHC, ICC/IF, IP, Flow Cytometry applications. This antibody reacts with Human, Mouse, Rat.
Application	Flow Cytometry, IP, IF, IHC, ICC, WB
Clonality	Monoclonal CFE-12
Formulation	Rabbit IgG in phosphate buffered saline, pH 7.4, 150mM NaCl, 0.02% sodium azide and 50% glycerol, 0.4-0.5mg/ml BSA.
Storage Instructions	Store at -20°C for one year. For short term storage and frequent use, store at 4°C for up to one month. Avoid repeated freeze-thaw cycles.
Host	Rabbit
Uniprot ID	P00338

Technical Details

Immunogen	A synthesized peptide derived from human Lactate Dehydrogenase
Isotype	Rabbit IgG
Form	Liquid
Concentration	Actual concentration vary by lot. Use suggested dilution ratio to decide dilution procedure.
Purification	Affinity-chromatography
Suggested Dilutions	Dilute the sample so that the expected range of concentrations fall within the detection range of this kit. If the expected range of concentration is unknown, a pilot test should be conducted to decide the optimal dilution ratio for your samples. Some PubMed article(s) citing the expression level of this target are as follows:

Boster Bio's internal QC testing used:

WB 1:500-1:2000

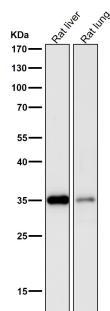
IHC 1:50-1:100

ICC/IF 1:50-1:100

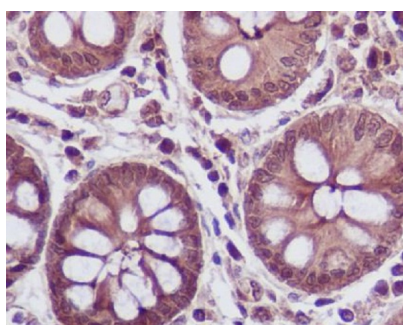
IP 1:50

FC 1:50

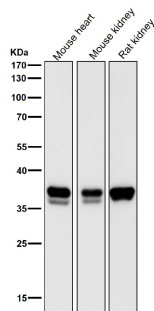
Anti-Lactate Dehydrogenase LDHA Rabbit Monoclonal Antibody (M00825) Images



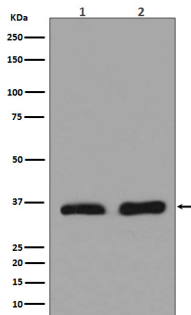
All lanes use the Antibody at 1:1K dilution for 1 hour at room temperature.



Immunohistochemical analysis of paraffin-embedded human colon, using Lactate Dehydrogenase Antibody.



All lanes use the Antibody at 1:1K dilution for 1 hour at room temperature.



Western blot analysis of LDHA expression in (1)Hela cell lysate;(2)Human heart lysate.

2 Publications Citing This Product

1. PubMed ID: -, Jiang X,Yuan J,Dou Y,Zeng D, Xiao S.Lipopolysaccharide Affects the Proliferation and Glucose Metabolism of Cervical Cancer Cells Through the FRA1/MDM2/p53 Pathway.Int J Med Sci 2021;18(4): 1030-1038.doi:10. 7150/ijms.47360.

2. PubMed ID: 32768579, Chen J,Wu D,Dong Z,Chen A,Liu S.The expression and role of glycolysis-associated molecules in infantile hemangioma.Life Sci.2020 Oct 15;259:118215.doi:10.1016/j.lfs.2020.118215.Epub 2020 Aug 5.PMID:32768579.

Visit bosterbio.com/anti-lactate-dehydrogenase-rabbit-monoclonal-antibody-m00825-boster.html to see all 2 publications.

Submit a product review to Biocompare.com

Submit a review of this product to Biocompare.com to receive a \$20 Amazon.com giftcard! Your reviews help your fellow scientists make the right decisions. Thank you for your contribution.



Anti-Lactate Dehydrogenase LDHA Rabbit Monoclonal Antibody