

Anti-LRP1/Lrp 1 Cluster Ii Rabbit Monoclonal Antibody

Catalog Number: M00829

About LRP1

Dynamin-related GTPase required for mitochondrial fusion and regulation of apoptosis. May form a diffusion barrier for proteins stored in mitochondrial cristae. Proteolytic processing in response to intrinsic apoptotic signals may lead to disassembly of OPA1 oligomers and release of the caspase activator cytochrome C (CYCS) into the mitochondrial intermembrane space.

Overview

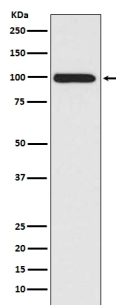
Product Name	Anti-LRP1/Lrp 1 Cluster Ii Rabbit Monoclonal Antibody
Reactive Species	Human, Mouse, Rat
Description	Boster Bio Anti-LRP1/Lrp 1 Cluster Ii Rabbit Monoclonal Antibody catalog # M00829. Tested in WB, IHC, ICC/IF, IP, Flow Cytometry applications. This antibody reacts with Human, Mouse, Rat.
Application	Flow Cytometry, IP, IF, IHC, ICC, WB
Clonality	Monoclonal BDC-12
Formulation	Rabbit IgG in phosphate buffered saline, pH 7.4, 150mM NaCl, 0.02% sodium azide and 50% glycerol, 0.4-0.5mg/ml BSA.
Storage Instructions	Store at -20°C for one year. For short term storage and frequent use, store at 4°C for up to one month. Avoid repeated freeze-thaw cycles.
Host	Rabbit
Uniprot ID	Q07954

Technical Details

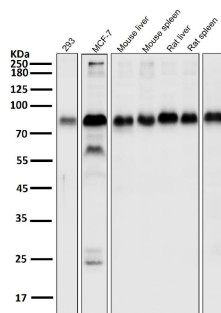
Immunogen	A synthesized peptide derived from human LRP1
Isotype	Rabbit IgG
Form	Liquid
Concentration	Actual concentration vary by lot. Use suggested dilution ratio to decide dilution procedure.
Purification	Affinity-chromatography
Suggested Dilutions	Dilute the sample so that the expected range of concentrations fall within the detection range of this kit. If the expected range of concentration is unknown, a pilot test should be conducted to decide the optimal dilution ratio for your samples. Some PubMed article(s) citing the expression level of this target are as follows: Boster Bio's internal QC testing used:

	WB 1:10000-1:20000 IHC 1:50-1:100 ICC/IF 1:50-1:100 IP 1:30 FC 1:50
--	---

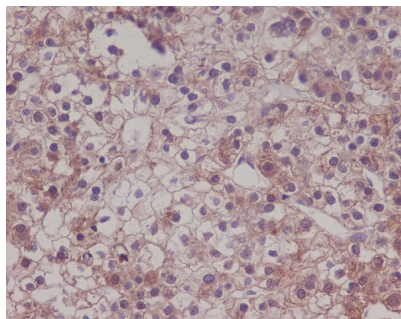
Anti-LRP1/Lrp 1 Cluster Ii Rabbit Monoclonal Antibody (M00829) Images



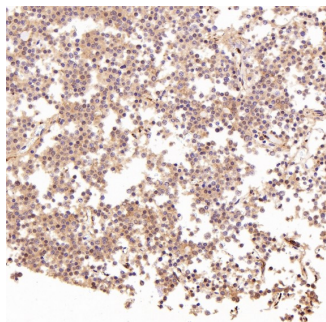
Western blot analysis of LRP1 expression in A549 cell lysate.



All lanes use the Antibody at 1:3W dilution for 1 hour at room temperature.

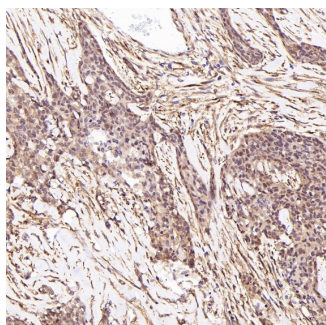
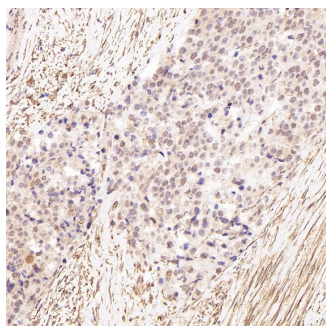


Immunohistochemical analysis of paraffin-embedded human liver carcinoma, using LRP1 Antibody.

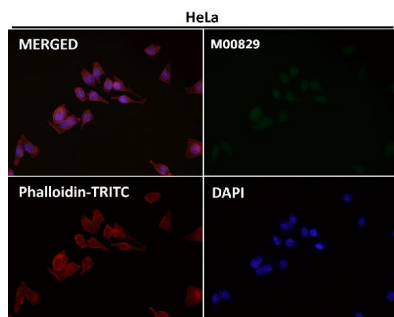


Immunohistochemical analysis of paraffin-embedded Human pituitary tumor, using the Antibody at 1:300 dilution.

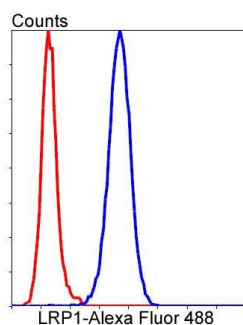
Immunohistochemical analysis of paraffin-embedded Human prostate cancer, using the Antibody at 1:300 dilution.



Immunohistochemical analysis of paraffin-embedded Human breast cancer, using the Antibody at 1:300 dilution.



Immunofluorescent analysis using the Antibody at 1:50 dilution.



Flow cytometric analysis of LRP1 was done on Hela cells. The cells were fixed, permeabilized and stained with the primary antibody (1/50) (blue). After incubation of the primary antibody at room temperature for an hour, the cells were stained with a Alexa Fluor 488-conjugated Goat anti-Rabbit IgG Secondary antibody at 1/1000 dilution for 30 minutes. Unlabelled sample was used as a control (cells without incubation with primary antibody; red).

Submit a product review to Biocompare.com

Submit a review of this product to Biocompare.com to receive a \$20 Amazon.com giftcard! Your reviews help your fellow scientists make the right decisions. Thank you for your contribution.



Anti-LRP1/Lrp 1 Cluster II Rabbit Monoclonal Antibody