

## Anti-Growth Hormone GH1 Rabbit Monoclonal Antibody

Catalog Number: M00851-1

### About GH1

Catalyzes the first step in leukotriene biosynthesis, and thereby plays a role in inflammatory processes.

### Overview

Product Name	Anti-Growth Hormone GH1 Rabbit Monoclonal Antibody
Reactive Species	Human
Description	Boster Bio Anti-Growth Hormone GH1 Rabbit Monoclonal Antibody catalog # M00851-1. Tested in WB, IHC, IP applications. This antibody reacts with Human.
Application	IP, IHC, WB
Clonality	Monoclonal AADG-7
Formulation	Rabbit IgG in phosphate buffered saline, pH 7.4, 150mM NaCl, 0.02% sodium azide and 50% glycerol, 0.4-0.5mg/ml BSA.
Storage Instructions	Store at -20°C for one year. For short term storage and frequent use, store at 4°C for up to one month. Avoid repeated freeze-thaw cycles.
Host	Rabbit
Uniprot ID	P01241

### Technical Details

Immunogen	A synthesized peptide derived from human Growth Hormone
Isotype	Rabbit IgG
Form	Liquid
Concentration	Actual concentration vary by lot. Use suggested dilution ratio to decide dilution procedure.
Purification	Affinity-chromatography
Suggested Dilutions	<p>Dilute the sample so that the expected range of concentrations fall within the detection range of this kit.</p> <p>If the expected range of concentration is unknown, a pilot test should be conducted to decide the optimal dilution ratio for your samples.</p> <p>Some PubMed article(s) citing the expression level of this target are as follows:</p> <p>Boster Bio's internal QC testing used:</p> <p>WB 1:500-1:2000</p> <p>IHC 1:50-1:200</p> <p>IP 1:20</p>



## Anti-Growth Hormone GH1 Rabbit Monoclonal Antibody (M00851-1) Images

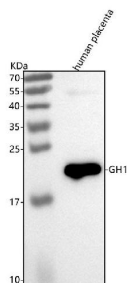
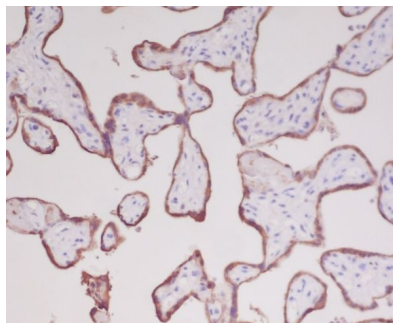


Figure 1. Western blot analysis of GH1 using anti-GH1 antibody (M00851-1). Electrophoresis was performed on a 5-20% SDS-PAGE gel at 70V (Stacking gel) / 90V (Resolving gel) for 2-3 hours. The sample well of each lane was loaded with 30 ug of sample under reducing conditions. Lane 1: human placenta tissue lysates. After electrophoresis, proteins were transferred to a nitrocellulose membrane at 150 mA for 50-90 minutes. Blocked the membrane with 5% non-fat milk/TBS for 1.5 hour at RT. The membrane was incubated with rabbit anti-GH1 antigen affinity purified monoclonal antibody (Catalog # M00851-1) at 1:500 overnight at 4°C, then washed with TBS-0.1%Tween 3 times with 5 minutes each and probed with a goat anti-rabbit IgG-HRP secondary antibody at a dilution of 1:5000 for 1.5 hour at RT. The signal is developed using an Enhanced Chemiluminescent detection (ECL) kit (Catalog # EK1002) with Tanon 5200 system. A specific band was detected for GH1 at approximately 22 kDa. The expected band size for GH1 is at 25 kDa.



Immunohistochemical analysis of paraffin-embedded human placenta, using Growth Hormone Antibody.

**Submit a product review to Biocompare.com**

Submit a review of this product to Biocompare.com to receive a \$20 Amazon.com giftcard! Your reviews help your fellow scientists make the right decisions. Thank you for your contribution.



Anti-Growth Hormone GH1 Rabbit Monoclonal Antibody